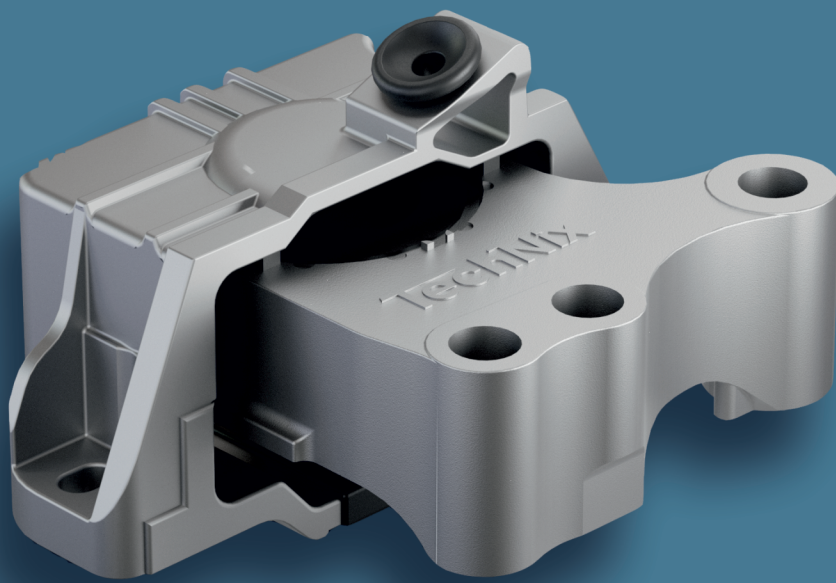


TechNix[®] High Performance

PRODUCTS CATALOGUE

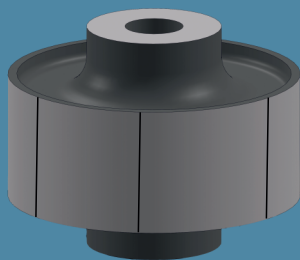
THIRD EDITION



Bracket Assembly Mountings



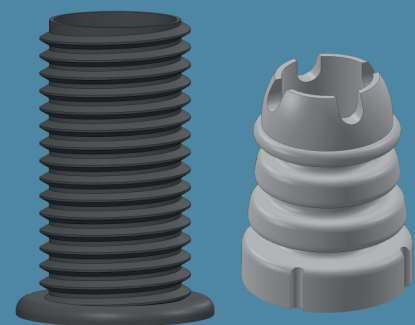
www.technixrubber.com



Rubber Bushes



Strut Mountings



Protection Boot Kits

High Performance TechNix®

THE GLOBAL PRODUCT



TechNix Rubber LLP



Official TecDoc Data Supplier



Conforms to ISO 9001:2015 requirements
DAKKS Germany Audited

TechNix®

www.technixrubber.com
For Price List & E-Catalogue



boodmo
spare parts expert

www.boodmo.com
Authorised Online Seller



Administrative Office:
TechNix Rubber LLP, 11 / 13
1st Bhatwadi Lane, Girgaum, Mumbai - 400 004.
info@technixauto.com

Printed in 2024

SUBSWAY®

SEDAN®

SUPERBOND®



Range for European Models

(Page 89 Onwards)

Optimised for 150 Horse Power + Motors

TechNix[®]



TechNix, the flagship brand of the Superbond Group, traces its origins back to Shalimar, a recognized leader in the automotive rubber parts sector with a rich legacy spanning sixty years. We take pride in our DAKKS Germany audited ISO 9001:2015 certification.

Our extensive distribution network covers the entire nation, allowing us to offer an unparalleled array of over 5000 rubber parts.

Emphasizing quality as a cornerstone of our operations, we are dedicated to not only meeting but surpassing the stringent performance standards of vehicles, even under the most challenging conditions

In recent years, the automotive industry has seen a notable rise in the demand for components that meet increasingly stringent NVH (Noise, Vibration, and Harshness) requirements. TechNix has emerged as a trailblazer in the development and production of High-Performance products, including a wide range of hydraulic engine mountings, rubber bushes, and strut kits

Our commitment to manufacturing excellence has enabled TechNix to attain the highest level of production quality. Our advanced machinery includes:

- Automated injection moulding systems for rubber,
- Fully automated blow moulding and injection moulding machines for plastics,
- Aluminum die casting machines,
- Shot blasting machinery,
- CNC machines
- 3D scanning technology, ensuring precision in crafting our moulds.
- Fully automated Poly-Urethane production machine

Through diligent research and development, our dedicated team has formulated exclusive materials for our products.

In today's fast-evolving market, characterized by an expansive array of vehicles and increasingly complex product requirements, TechNix remains committed to dynamism, driving innovation within the industry.



TechNix has a **DAKKS Germany** audited ISO 9001:2015 certification and is a certified data supplier to **TecDoc**.

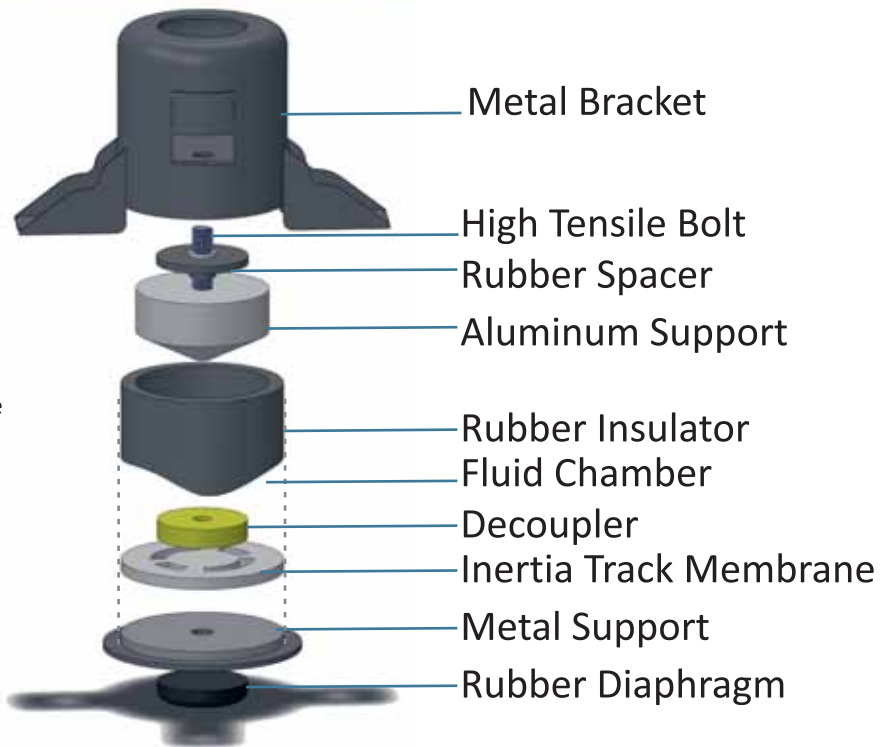


Disclaimer: TechNix is a Registered Trademark. This catalogue is protected by copyright. Any Duplication or part of it is prohibited by law. The TechNix logo, product codes, images and all artwork used in this catalogue are protected by copyright.

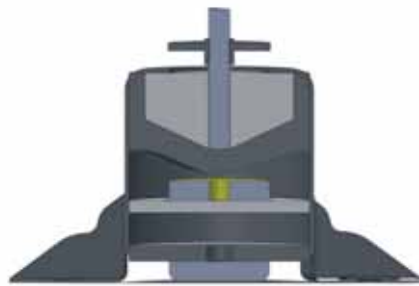
BRACKET ASSEMBLY MOUNTINGS

Engine mountings earlier were simply a slab of rubber moulded between metal plates. With time, as the engines used in vehicles have become stronger, so have their NVH demands. Engine mountings today have intricate internal structures and critically designed aluminium bodies and brackets.

TechNix hydraulic mountings have been designed with functional fluid chambers in accordance with the latest technologies in the industry. The chamber contains a viscous fluid to dampen the motion. The decoupler and membrane together provide a passage for fluid flow which efficiently isolates vibrations under high stress conditions. The grade and thickness of metal used, along with the rubber hardness influence the natural frequency of the structure which regulates its performance.



Quarter Sectional View



Cross Sectional View



Isometric View

TechNix has been the leading brand which has developed hundreds of engine mountings to precision with its state of the art manufacturing technology, making them widely available to the market. We ensure the correct construction with an emphasis on performance.

We have also introduced electronic active mounts and vacuum-pipe mounts, keeping in pace with the advancing technologies. Be it for heavy duty cars, performance vehicles like SUVs, sports cars with V8 engines, TechNix has all the mountings, even for vehicles with 700 Horsepower, attaining speeds of over 300 kmph.

STRUT MOUNTINGS

Strut mountings play a vital role in shock absorption. They take much of the load when shock absorbers are under stress and ensure a smooth ride.

While strut mounts can be easily made to fit a vehicle, very few manufacturers can ensure optimum performance. With passing time, the rubber compresses under the load of the vehicle and strut mounts wear out.

TechNix's High Performance strut mounts are designed to surpass the strength of OEM mounts, with a reinforced and thickened mass made of the highest quality heat and grease resistant rubber.

Our range also includes aluminium and steel strut mounts, with thick, strengthened metals to bear the working load.

TechNix oversized strut mountings for added strength, insulation and longevity

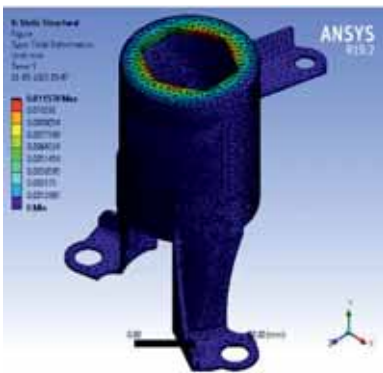
OE design is smaller in size, prone to wearing out sooner



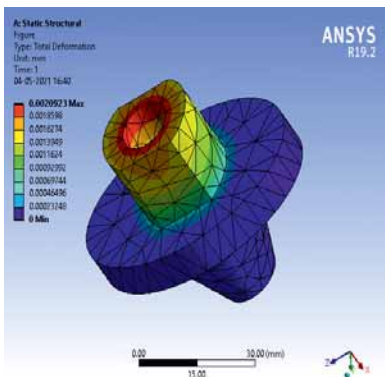
BRACKET ASSEMBLY MOUNTINGS

The development process for our engine mountings includes simulated computer analysis. The grade of the materials to be used is determined by optimisation on digital simulations to ensure the perfect performance

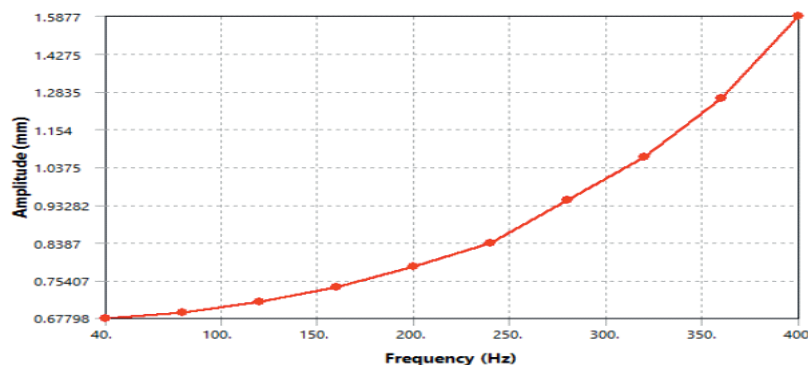
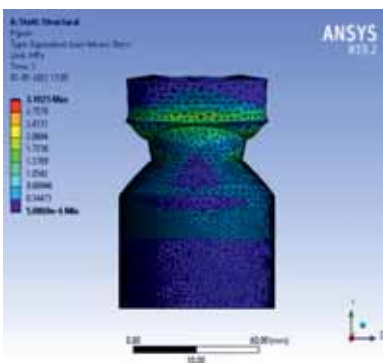
The images and graphs shown here illustrate the analysis and research for the development of an engine mounting done by our company in the fabrication stage.



Material	Force	Max equivalent stress	Max deformation	Min FOS
Cast steel	3KN	46.544 MPa	0.011407	7.4983
High carbon steel	3KN	46.688 MPa	0.010957 mm	15
Structural steel	3KN	46.564 MPa	0.010957 mm	15



Material	Force	Max equivalent stress	Max deformation	Min FOS
Cast iron	3 KN	10.358 MPa	0	15
	99 KN	341.74 MPa	0.031 mm	1.0066
Aluminium alloy	3 KN	7.0739 MPa	0.002mm	15
	83.85 KN	279.85 MPa	0.061 mm	1.0005
Magnesium alloy	3 KN	9.889 MPa	0.003 mm	15
	58 KN	190.97 MPa	0.065 mm	1.0107



Disclaimer: All images and data used here are property of Technix Rubber. Reproduction without permission is prohibited.

RUBBER BUSHES

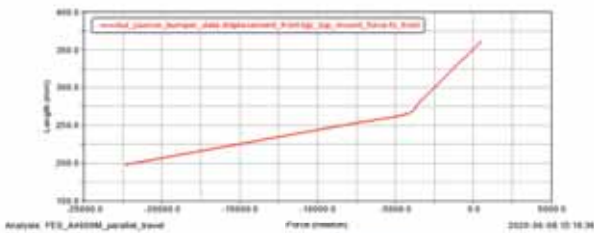
TechNix rubber bushes are manufactured to withstand heavy loads even in the most critical stress conditions. It is necessary for the rubber to be strongly bonded to the metal body as well as the inner pipe while maintaining the correct dimensions of the outer body as well as the diameter of the inner pipe to obtain a strong connection between the chassis and control arm, which retains its bond even under extreme stress.

Our bushes provide a smooth ride and prevent rattling noises, giving maximum suspension movement due to their low compression set. Our proprietary rubber compound mixture of NR, BR as well as anti oxidative agents, along with the moulding technology and high grade bonding agent produces bushes of unparalleled strength. The pipes and outer metal bodies are constructed in such a manner that they are able to withstand loads much higher than the vehicle would ever encounter.



PROTECTION BOOT KITS

PU BUMP STOPPERS



Scan to view our Testing Process



TechNix PU stoppers are manufactured in a completely automated process using an exclusive PU formulation. The raw materials are mixed automatically, ensuring absolute uniformity of the product. Stringent quality control tests are conducted for every production cycle. The stoppers have a high performance anti ageing agent, giving a shelf life of over five years. Even at temperatures as low as -40 deg Celsius, they do not harden, crack or decompose to powder. The hardness is optimised for every bumper according to its shape. All of these factors ensure a smooth riding experience, with minimal noise and vibration.

DUST COVERS

TechNix dust covers are made of the highest grade TPV polymer, providing elasticity, heat resistance, oil resistance and longevity. Even under extreme loads, they do not crack and retain their original shape. High elasticity enables them to respond rapidly to the shock absorber motion, ensuring a smooth ride. It protects dust particles from entering and lubricating oils from flowing out of the shock absorber.

STRUT BEARING

TechNix Strut Bearings are engineered to have the optimum level of smoothness to give the optimum response to the motion of the steering and suspension framework. Comprising of strengthened metal balls and high grade, heat resistant lubricating grease, which can withstand temperatures ranging from -200 to +1300 deg Celsius, an optimum level of torsional as well as vertical load resistance is achieved.

COIL PADS

TechNix Coil Pads are oversized and made of our proprietary rubber compound, enabling them to efficiently bear the weight of the coil spring without wearing out under the working load.



CODE	APPLICABILITY	PAGE NO.
VVE	VV-VENT, AME, SKD-RPD (10-)	01-02
VPO, VVE	VV-POL, SKD-FAB NM (10-)	01-02
SFA, VVE, VPO	SKD-FAB OM (07-10)	01-02
SSU	SKD-SUPB OM	03
SOC	SKD-OCT (99-10)	03
SLA	SKD-LAUR, YETI, SUPB, VV-JET, PAST (04-13)	04-05
SO3	SKD-OCT3, VV-JET NM (15-)	06-07
SKD	SKD-KODQ, VV-TIGN (18-)	06-07
SKQ	SKD-KUSHQ, SLAV, VV-TAGUN, VRTS	07
FFI	FRD-FIEST, FIG, TITNM (05-10)	08-09
FES	FRD-ECSPT, TITNM (13-)	09-10
FES2	FRD-ECSPT NM (18-22)	10-11
FFA	FRD-FIG ASP (15-)	11-12
FED3	FRD-ENDVR 3 (16-)	12
FIK	FRD-IKN (99-10)	13
JPC	JEP-COMPS (17-)	14-15
FPT	FIT-PNTO, LINA (08-18)	15
GMH	MG-HCTR (20-)	16
CBT	CHV- BET (09-15)	17-18
CAV	CHV-AVO (02-11)	18-19
CSA	CHV-SAL, UVA (12-17)	19
CSP	CHV-SPRK (05-09)	19
COP	CHV-OPTR (02-11)	20
CCZ	CHV-CRUZ (08-17)	21-22
CCP	CHV-CAPTVA (06-11)	22-23
CEN	CHV-ENJY (13-17)	24
RDS	REN-DSTR, LDGY NSN-TERNO	25-27
RLG, RDS	REN-LOGN, MAH-VRITO	25-27
RTR	REN-TRBR (19-)	28
RKW	REN-KWD, DATS-RED GO (15-)	29
RFL	REN-FLUNCE (11-17)	30
NTE	NSN-TENA (08-13)	30
NMI, NSU	REN-PULS, SCLA	31-32
NMI, NSU	NISN-MICR, NISN-SUNY	31-32
DGO, NMI	DATSN-GO	31-32

CODE	APPLICABILITY	PAGE NO.
NEV	NISN-EVALA	32
NXT	NISN-X-TRAL, REN-KOLS	32
HC3	HND-CTY T3 (02-07)	33
HC5	HND-CTY T5, JAZ2 (08-13)	34
HC6	HND-CTY T6, JAZ3	35-36
HWR, HC6	HND-WRV (14-)	35-36
HZ2, HC6	HND-AMAZ T2 (18-)	35-36
HZ1	HND-AMAZ T1 (13-17)	37-38
HBR, HZ1	HND-BRI (13-)	37-38
HMB, H1Z	HND-MOBIL (13-)	37-38
HCK2	HND-CIVC T2 (19-20)	38
HCK	HND-CIVC (05-11)	39
HA1, HA2	HND-ACCRD (03-07)	40-41
HA2	HND-ACCRD (08-12)	40-41
HR3	HND-CRV3 (06-11)	42-43
HR4, HR3	HND-CRV4 (11-16)	43
HR2	HND-CRV2 (02-06)	44
HCT	HND-CTY (97-02)	45
TEO	TYTA-ETOS LVA (10-), ETOS CROS (14-)	46-47
TC1	TYTA-CROLA (03-08)	47
TC2, TC1	TYTA-CROLA ALTS (08-13)	47-48
TY1	TYTA-CAMR AV40 (06-11)	49
TY2	TYTA-CAMR (12-18)	49
TIV	TYTA-INOV (05-)	50-51
TFO, TIV	TYTA-FORTNER (09-)	50-51
IDM	ISZU-DMAX, MUV	51
MTO	MITS-OUTLNDR	51
MTL	MITS-LANCR	52-53
MTC	MITS-CDIA	53
MTP	MIT-PAJRO	53
YCR	HYU-CRTA, KIA-SELTS	54
YSF	HYU-SANT FE (09-13)	55-56
YSF2	HYU-SANT FE (13-18)	55-56
YTS	HYU-TUCSN (16-20)	56
YE3	HYN-ELNTRA3 (16-20)	56

CODE	APPLICABILITY	PAGE NO.
YV1	HYU-VRNA (07-11)	57-58
YV2	HYU-VRNA FLDIC (11-17)	58-59
YE2, YV2	HYU-ELNTRA2 (06-13)	58-59
YV3	HYU-VRNA T3 (17-22)	59-60
YVU	HYU-VENTU (19-)	60
YE1	HYU-ELNTRA1 (00-06)	61
YSE	HYU-SONAT EMBRA (04-09)	61
YEO	HYU-YEON (11-19)	62
Y10	HYU-10 (07-13)	63
Y1G	HYU-10 GRND, XCNT	64
Y20	HYU-20 (08-14)	65
Y2E	HYU-20 ELIT (14-20)	66
YSN	HYU-SANT, XNG (98-14)	66-67
YAC	HYU-ACENT (99-13)	68-69
YGZ	HYU-GTZ (04-10)	69
MS1	MAR-SWFT, DZR, RTZ (04-10)	70
MS2, MEG	MAR-SWFT, DZR, ERTG (10-17)	71-72
MCZ	MAR-CIZ (14-)	72
MBR	MAR-BRZA (16-22), S-CROS (15-22)	73
MAS	MAR-ASTR (08-13)	73
MIG	MAR-IGNS (16-)	73
MS3	MAR-SWFT, BALNO, ERTG (17-)	74
MSB	MAR- BALNO T-2 (19-)	74
MCE	MAR-CELERO (13-20)	74
MSX	MAR-SX4 (07-13)	75
MAL	MAR-ALT, WGN-R, ZN ESTL T-1	76
MAK	MAR-ALT K10	76
MWR	MAR-WGN-R T-2, STNGRY	76-77
MC, MV	MAR CAR, VAN	77
TATZ, TAZE	TAT-TIGR, TIAG	78-79
TAZE	TAT-ZST, BLT, INDCA VSTA, MNZA, ALTRZ, INDG NM	78-79
TANX	TAT-NXON (17-)	78-79
TAHR	TAT-HARER, SFARI NM	79
TAAL	TAT-ALTRZ (19-)	80
TAIG	TAT-INDGO	80

CODE	APPLICABILITY	PAGE NO.
TAIN	TAT-INDCA	80
TANA	TAT-NAN (08-18)	80
MM5	MAH-XU500 (11-21)	81
MM3	MAH-XU300 (19-)	82
MM7	MAH-XU700 (21-)	82-83
MMK1	MAH-KU100	83
MMZ	MAH-MRAZO	83
MMTH	MAH-THR 2ND GEN	83
MMK1	MAH-KU-100	84
MMB2	MAH-BOLR2 (16-), QUNTO, TU300	85
MMSC	MAH-SCRPO	85-86
MMS1	MAH-SCRPO S10	85-86
MMXY	MAH-XYL	86
MJE, JM, JI	MAH-JETO, JP INTL, MXMO	87
JP, MN	MAH-PGT, CMDR, ARMDA, NSN CKNG, LKNG	87
EC, SM	ECHR CNTR, SWRJ MZDA	88
AQ5	AUD-Q5, A4 (08-17)	89-90
AA6, AQ5	AUD-A6 (4G) (10-18)	89-90
AA6F	AUD-A6 (4F)	89
AA4W, AQ5A	AUD- A4 (8W) (2018-)	89-90
AQ5A	AUD- Q5, Q7, Q8, A4, A6, A8 (17-)	90
AQ3	AUD-Q3 (12-18)	91
AQ7	AUD-Q7 (06-15)	92-93
PCY, AQ7	PORSC-CAYEN (02-)	92-93
PNM	PORSC-PANMRA	93
PMGT	PORSC-MCAN, CAYEN GT	93
P911	PORSC-911 CARERA	93
MBC4	MERC-C204, E212	94-95
MBE4, MBC4	MERC-E212	94-95
MBC3	MERC-C203, E211, S221, MAYBCH	95
MBE3, MBC3	MERC-E211	95-96
MBC5	MERC-C205, E213, GLC	96-97
MBGC, MBC5	MERC-GLC	96-97
MBS2	MER- S222, MAYBCH	96
MBA	MERC-A, B, CLA, GLA	97-98

CODE	APPLICABILITY	PAGE NO.
MBA2	MERC-A, B, CLA, GLA, GLB NEW MODELS	98
MBG6	MERC-ML, GL, GLE, GLS 166	99
MBG7	GLE, GLS 167	100
MBG4	MERC-ML, GL 164	100
B3E	BM-3 SER E90, X1 E84	101
B3F	BM-3 SER F30, 3S GT F34	102
BX1F	BM-X1 F48, 2SER, MIN COPR F55	103
B5F	BM-5 SER F10	104-105
B5E	BM-5 SER E60	105
BX3F	BM-X3 F25	106
BX5E	BM-X5 E70, X6 E71	107-108
BX5F	BM-X5 F15, X6 F16	107-108
B5G	BM-3S, 5S, 7S, X3, X5, X7 NM	108
B3G	BM 3S G20	108
BX3G	BM X3 G01	109
BR60	MINI COPR R60	109
BF56	MINI COPR F56	109
JXF	JAG-XF	110
JXJ	JAG-XJ	110
JXE	JAG-XE	111
JFP	JAG-F PCE	111
LRDS	LND RVR- FRLD2, EVQ, DISC SPRT	112
LR405	LR RNG RVR SPRT, VOG 405, 494 DSL	113
LR494	LR RNG RVR SPRT, VOG 405, 494 PTL	113
LRDS2	LND RVR- EVQ, DISC SPRT (19-)	113
LREV2	EVOQUE 2ND GEN (2019-)	113
VOX60	VOL XC60, XC90, S60, V60, S90 (17-)	114
VOX90	VOL XC90 (2011-14)	114
VOV40	VOL V40	115
VOX40	VOL XC40	115

Note: Prices mentioned in the catalogue are subject to change.
Material will be invoiced as per the current prices.



VVE-T1011
Bracket Assy Mounting
(Engine-RH)
V-VENT
S-RPD
DSL **MRP: 2450**



VVE-T1001
Bracket Assy Mounting
(Engine-RH)
V-VENT
S-RPD
PTL **MRP: 2550**



VVE-T2110
Bracket Assy Mounting
(Torque RR)
V-VENT, PLO
S-RPD, FAB
SHORT PLATE DSL **MRP: 1950**



VVE-T2100
Bracket Assy Mounting
(Torque RR)
V-VENT, PLO
S-RPD, FAB
LONG PLATE PTL **MRP: 2050**



VVE-T2010
Bracket Assy Mounting
(Trans-LH)
V-VENT, PLO
S-RPD, FAB
DSL **MRP: 2700**



VVE-T2000
Bracket Assy Mounting
(Trans-LH)
V-VENT, PLO
S-RPD, FAB
MRP: 2800



VPO-T1011
Bracket Assy Mounting
(Engine-RH)
V-POL
S-FAB
DSL **MRP: 2750**



VPO-T1001
Bracket Assy Mounting
(Engine-RH)
V-POL
S-FAB
PTL **MRP: 2800**



SFA-T1011
Bracket Assy Mounting
(Engine-RH) Hydraulic
S-FAB, RPD
V-VENT, POL
DSL **MRP: 4000**



SFA-T1001
Bracket Assy Mounting
(Engine-RH) Hydraulic
S-FAB, RPD
V-VENT, POL
MRP: 3100



VVE-T1031
Bracket Assy Mounting
(Engine-RH)
V-VENT, POL
S-RPD
2018- **MRP: 3800**



VPO-T2100
Bracket Assy Mounting
(Torque RR)
V-POL
S-FAB
SHORT PLATE **MRP: 2050**

VVE-A4608M MRP: 400

Mounting



VVE-A4608S - 2 Pcs

Mounting

(Strut-FR)

V-VENT, PLO

S-OCT, RPD, FAB

MRP: 540

VVE-A4608R

MRP: 160 Retainer



VVE-T5608

Bracket Assy Mounting

(Strut-RR)

V-VENT, PLO

S-OCT, RPD, FAB

MRP: 800



VVE-T5201

Mounting

(RR Axle Arm)

V-VENT, PLO

S-OCT, RPD, FAB

MRP: 700

VVE-A4100 Rubber Bushes -FR (4 Pcs)

MRP: 1100



VVE-A4101 Bush Fr -FR



VVE-A4105 Bush Rr -FR



VVE-A4301 Bush (Bar-FR) ID=17mm

VVE-A4000 - 6 Pcs

Rubber Bushes

FR

V-VENT, PLO

S-RPD, FAB

MRP: 1200

VVE-A4600H Protection Boot Kit -FR W/o Mount (3 Pcs)

MRP: 525



VVE-A4603 Boot



VVE-T4602 Bump



VVE-A4606 Bearing



VVE-A4608M Mounting

VVE-A4600 - 4 Pcs

Protection Boot Kit -

FR W/Mount

V-VENT, PLO

S-RPD, FAB

MRP: 900



VVE-A5603 Boot



VVE-T5602 Bump



VVE-A5600 - 3 Pcs

Protection Boot Kit -

RR

V-VENT, PLO

S-OCT, RPD, FAB

MRP: 525

SFA-A4601 - 2 Pcs

Protection Boot Kit -

FR

FABI

MRP: 650



SFA-T4602



SFA-T5602

SFA-A5600 - 3 Pcs

Protection Boot Kit -

RR

V-POL, S-FAB

MRP: 680

Rubber Parts



SOC-T1001
Bracket Assy Mounting
(Engine-RH)
OCTV '96-10

MRP: 3700



SOC-T1002
Bracket Assy Mounting
(Transmission-LH)
OCTV '96-10

MRP: 3000



SOC-T2100
Bracket Assy Mounting
(Torque Rod RR)
OCTV '96-10

MRP: 2800



SOC-A4400
Bush Link Assy
(Bar-FR)
OCTV '96-10

MRP: 375



SSU-T1000
Bracket Assy Mounting
(Engine-FR)
SUPB 05-09

MRP: 2300



SSU-T2100
Bracket Assy Mounting
(Trans-RR)
SUPB 05-09

MRP: 1300

VVE-A4100 Rubber Bushes -FR (4 Pcs)

MRP: 1100



VVE-A4101 Bush Fr -FR



VVE-A4105 Bush Rr -FR



SOC-A4301 Bush (Bar-FR) ID=17mm

SOC-A4000 - 6 Pcs

Rubber Bushes -FR

OCTV '96-10

MRP: 1200

SOC-A4600H Protection Boot Kit -FR W/oMount (3 Pcs)

MRP: 560



VVE-A4603 Boot



VVE-T4602 Bump



SOC-A4606 Bearing



VVE-A4608 Mounting

SOC-A4600 - 4 Pcs

Protection Boot Kit -
FR W/Mount

OCTV '96-10

MRP: 900



VVE-A5603 Boot



VVE-T5602 Bump



VVE-A5600 - 4 Pcs

Protection Boot Kit -
RR

V-VENT, PLO
S- OCT, RPD, FAB

MRP: 525

Engine Mounting



SLA-T1001
Bracket Assy Mounting
(Engine-RH) Hydraulic
S-LAU, SUPB, YET
V-JET, PAS
MRP: 3850



SLA-T1002
Bracket Assy Mounting
(Trans-LH)-MT
S-LAU, SUPB, YET
V-JET, PAS
MRP: 2850



SLA-T1021
Bracket Assy Mounting
(Eng RH)
S-LAU
V-JET
PTL **MRP: 4000**



SLA-T1012
Bracket Assy Mounting
(Trans-LH)-AT
S-LAU, SUPB, YET
V-JET, PAS
MRP: 2850



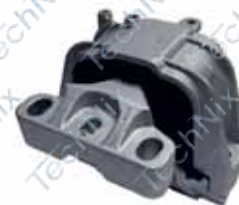
SLA-T2100
Bracket Assy Mounting
(Torque Rod RR)
S-LAU, SUPB, YET
V-JET
MRP: 1500



SLA-T3000
Bracket Assy Mounting
(Torque-UPR/LWR)
S-LAU, SUPB, YET
V-JET, PAS
MRP: 1700



SLA-T4608
Bracket Assy Mounting
(Strut-FR)
S-LAU, SUPB, YET
V-JET, PAS
MRP: 1100



SLA-T1031
Bracket Assy Mounting
(Engine - RH)
S-SUPB V6 09-14
V-JET, PAS
MRP: 5000



SLA-T5608
Bracket Assy Mounting
(Strut-RR)
S-LAU, SUPB, YET
V-JET, PAS
MRP: 1200



SLA-T5618
Bracket Assy Mounting
(Strut-RR) OVAL
S-LAU, SUPB, YET
V-JET, PAS
MRP: 1300

SLA-T4100M Bracket Mounting (Control Arm-FR) 4Pc

MRP: 3700



SLA-A4101



SLA-T4105R/L



SLA-T4301

SLA-T4000M - 6 Pcs

Bracket Mounting
(Control Arm-FR)
S-LAU, SUPB, YET
V-JET

MRP: 4400

Rubber Parts

SLA-A4100 Bracket Mounting (Control Arm-FR) 4Pc



SLA-A4101 Control Arm-FR



SLA-A4105 Control Arm-LH / RH



SLA-A4301 Bar-FR

SLA-A4000 - 6 Pcs

Bracket Mounting
(Control Arm-FR)
LAU, SUP
YET, V-JET

MRP: 1900



SLA-T5000 - 16 Pcs

Mounting Kit
(Control Arm-RR)
S-LAU, SUPB, YET
V-JET, PAS

MRP: 5800



SLA-T5201

Mounting
(RR Axle Arm)
S-LAU, SUPB, YET
V-JET, PAS

MRP: 525



SLA-T4301
Bracket Assy Mounting
(Bar-FR)
S-LAU, SUPB, YET
V-JET, PAS

MRP: 375



SLA-T5301
Bracket Assy Mounting
(Bar-RR)
S-LAU, SUPB, YET
V-JET, PAS

MRP: 400



SLA-T4306
Bar Stab-FR

S-LAU, SUPB, YET

MRP: 6300

SLA-A4600 Protection Boot Kit -FR W/Brg (3 Pcs)

MRP: 1300

SLA-A4601 Protection Boot Kit -FR (2 Pcs)
MRP: 625



SLA-A4603 Boot



SLA-T4602 Bump



SLA-A4606 Bearing



SLA-T4608 Strut- FR

SLA-A4600M - 4 Pcs

Protection Boot Kit -
FR W/Mount/Brg
S-LAU, SUPB, YET

MRP: 2450



SLA-A5603
Boot



SLA-T5602
Bump -RR 135mm

SLA-A5600 - 4 Pcs

Protection Boot Kit
-RR
S-LAU, SUPB, YET
V-JET, PAS

MRP: 725



SLA-A5603
Boot



SLA-T5612
Bump -RR Oval

SLA-A5610 - 4 Pcs

Protection Boot Kit
-RR Oval
S-LAU, SUPB, YET
V-JET, PAS

MRP: 825



SO3-T1001
Bracket Assy Mounting
(Engine-RH) Hydraulic
S-OCT3, KODQ, KARQ SUPB NM
V-TIG, TROC, JET NM
A-Q3 (F3)
MRP: 3800



SO3-T1011
Bracket Assy Mounting
(Engine-RH) Hydraulic
S-OCT3, KODQ, KARQ
SUPB NM
V-TIG, TROC, JET NM
A-A3 **MRP: 4800**



SO3-T1021
Bracket Assy Mounting
(Engine-RH) Hydraulic
S-OCT3, KARQ
V-TROC
A-A3
PTL **MRP: 3800**



SO3-T3000
Bracket Assy Mounting
(Torque-UPR/LWR)
S-OCT3, KODQ, KARQ, SUPB NM
V-TIG, TROC, PAST NM,
JET NM **MRP: 1900**
A-Q3 (F3), A3



SO3-T1002
Bracket Assy Mounting
(Trans-LH)-MT
S-OCT3, SUPB NM
V-TROC, PAST NM
A-A3, TT NM
MRP: 4000



SO3-T1012
Bracket Assy Mounting
(Trans-LH)-AT
S-OCT3, SUPRB3
V-TROC, PAST NM
A-A3, TT NM
MRP: 4000



SO3-T2100
Bracket Assy Mounting
(Torque Rod RR)
S-OCT3, SUPRB3
V-TROC, PAST NM
A-A3 **MRP: 1700**



SO3-T2110
Bracket Assy Mounting
(Torque Rod RR)
S-OCT3
V-TROC, PAST NM
A-A3 **MRP: 1700**



SO3-T2120
Bracket Assy Mounting
(Torque Rod RR)
S-OCT3, KODQ, SUPB NM
V-TIG, TROC, PAST NM,
JET NM **MRP: 1800**
A-Q3 (F3), A3, TT (NM)



SKD-T2100
Bracket Assy Mounting
(Torque Rod RR)
S-KODQ
V-TIG
A-Q3 (F3)
MRP: 2800



SKD-T1012
Bracket Assy Mounting
(Trans-LH)-AT
S-KODQ
V-TIG
MRP: 5000



SKD-T1022
Bracket Assy Mounting
(Trans-LH)-AT Hydraulic
S-KODQ
V-TIG
MRP: 6000



SO3-T4608
Bracket Assy Mounting
(Strut-FR)
S-OCT3, KOD, SUPB, KROQ
V-JET, TIG, T-ROC
A-Q3(F3), A3, TT
MRP: 1400



SO3-T5608
Bracket Assy Mounting
(Strut-RR)
S-OCT3, KOD, SUPB, KROQ
V-JET, TIG, T-ROC
A-Q3(F3), A3, TT
MRP: 1400



SO3-A4603 Boot

SO3-A4601 Protection Boot Kit - FR (2 Pcs)
MRP: 650



SO3-T4602 Bump



SO3-T4606 Bearing

SO3-A4600 - 3 Pcs
Protection Boot Kit -
FR
S-OCT3, KOD, SUPB, KROQ
V-JET, TIGN, T-ROC
A-Q3(F3), A3, TT
MRP: 2400



SO3-A5603 Boot



SO3-T5602 Bump

SO3-A5600 - 2 Pcs
Protection Boot Kit -
RR
S-OCT3, KOD, SUPB, KROQ
V-JET, TIGN, T-ROC
A-Q3(F3), A3, TT
MRP: 650



SO3-T5201
Mounting
(RR Axle Arm)
S-OCT3, KOD, SUPB, KROQ
V-JET, TIGN, T-ROC
A-Q3(F3), A3, TT
MRP: 1400



SLA-A4101 Bush Fr- FR



SO3-A4105 Bush Rr- FR

SO3-A4100 Rubber Bushes -FR (4 Pcs)
MRP: 1650



SO3-A4301 Bush Bar

SO3-A4000 - 6 Pcs
Rubber Bushes -
FR
S-OCT3, KOD, SUPB, KROQ
V-JET, TIGN, T-ROC
A-Q3(F3), A3, TT
MRP: 2900



SO3-A4301
Bracket Assy Mounting
(Bar-FR)
S-OCT3, SUPB, KOD, KROQ
V-TIGN, T-ROC
A-Q3(F3), A3, TT
MRP: 750



SKQ-T2100
Bracket Assy Mounting
(Torque Rod RR)
S-KUSHQ, SLAV
V-TAGUN, VRTS
MRP: 4000



SKQ-T1001
Bracket Assy Mounting
(Engine-RH) Hydraulic
S-KUSHQ, SLAV
V-TAGUN, VRTS
MRP: 4500



SKQ-T1002
Bracket Assy Mounting
(Trans-LH)-MT
S-KUSHQ, SLAV
V-TAGUN, VRTS
MRP: 5000

Engine Mounting



FFI-T1000
Bracket Assy Mounting
(Engine-FR)
FIST, FUS, FIG'05-10

MRP: 1950



FFI-T1001
Bracket Assy Mounting
(Engine-RH) Hydraulic
FIST, FUS, FIG

MRP: 2650



FFI-T2100
Bracket Assy Mounting
(TorqueRod-RR)
FIST, FUS, FIG'05-10
ECSPT

MRP: 1450



FFI-T2110
Bracket Assy Mounting
(Torque Rod)
FSTA, FIG'10-15 TITN

MRP: 1750



FFI-T1010
Bracket Assy Mounting
(Engine-FR)
FRD-FIST 10-17

MRP: 2800



FFI-T1011
Bracket Assy Mounting
(Engine-RH) NM
FIG PETROL NM

MRP: 3300



FFI-A4608
Mounting (Strut-FR)
FIST, FUS, FIG'05-10

MRP: 525



FFI-A5608
Mounting (Strut-RR)
FIST, FUS, FIG

MRP: 675

FFI-A4105M
MRP: 1150



FFI-A4100M- 4 Pcs
Rubber Bushes -FR
FIST, FUS, FIG'05-10

MRP: 300 FFI-A4101

MRP: 2900



FFI-A5201
Bush RR Axle Arm
FIST, FUS, FIG

MRP: 600

FFI-A4100 Rubber Bushes -FR (4 Pcs)

MRP: 1300



FFI-A4101 Bush Fr-FR



FFI-A4105 Bush Rr-FR



FFI-A4301 Bush (Bar-FR)

FFI-A4000 - 6 Pcs

Rubber Bushes -FR
FIST, FUS, FIG'05-10

MRP: 1500

Rubber Parts

FFI-A4601 Protection Boot Kit -FR W/o Brg (2 Pcs)

MRP: 400



FFI-A4603 Boot



FFI-T4602 Bump Stopper -FR



FFI-A4606 Bearing -FR

FFI-A4600 - 3 Pcs

Protection Boot Kit -
FR W/Brg
FIST, FUS, FIG'05-10

MRP: 850



FFI-A5603 Boot



FFI-T5602 Bump Stopper -RR



FFI-A5600 - 3 Pcs

Protection Boot Kit -RR
FIST, FUS, FIG'05-10

MRP: 575

FES-A4601 Protection Boot Kit -FR W/o Brg (2 Pcs)

MRP: 575



FES-A4603 Boot



FES-T4602 Bump Stopper -FR



FES-A4606 Bearing -FR

FES-A4600 - 3 Pcs

Protection Boot Kit -
FR W/Brg
FRD-ECSPT, FIES NM, ASPR

MRP: 1050

FES-A4100 Rubber Bushes -FR (4 Pcs)

MRP: 1500



FES-A4101 Bush Fr -FR



FES-A4105 Bush Rr -FR



FES-A4301 Bush (Bar-FR)

FES-A4000 - 6 Pcs

Rubber Bushes -FR
FRD ECSPT

MRP: 1700



FES-T5602

FES-A5600 - 4 Pcs

Protection Boot Kit -
RR W/Pad
FRD-ECSPT, FIES NM, ASPR

MRP: 750



FES-A5608
Mounting (Strut-RR)

FRD-ECSPT, FIES NM, ASPR

MRP: 675



FES-A5201
Bush RR Axle Arm

FRD ECSPT

MRP: 750



FES-T4608
Bracket Assy Mounting
(Strut-FR)

FRD-ECSPT, FIES, ASPR

MRP: 600

Engine Mounting



FES-T1000
Bracket Assy Mounting
(Engine-FR)
FRD ECSPT

MRP: 2500



FES-T1001A
Bracket Assy Mounting
(Engine-RH) Hydraulic
W/o Alum
FRD ECSPT, FIES 2ND GEN

MRP: 2600



FES-T1001
Bracket Assy Mounting
(Engine-RH) Hydraulic
FRD ECSPT 1.5L PTL

MRP: 3500



FES-T1011
Bracket Assy Mounting
(Engine-RH) Hydraulic
FRD ECSPT DSL

MRP: 3200



FES-T2100
Bracket Assy Mounting
(Torque Rod-RR)
FRD ECSPT

MRP: 2100



FES-T2101
Bracket Assy Mounting
(Torque Rod-R)
FRD ECSPT

MRP: 1800



FFI-T2100
Bracket Assy Mounting
(Torque Rod-RR)
FIST, FUS, FIG'05-10
ECSPT

MRP: 1450



FES2-T1000
Bracket Assy Mounting
(Engine-FR)
ECSPT 2018-22

MRP: 3300



FES2-T1001
Bracket Assy Mounting
(Engine-RH) Hydraulic
ECSPT 2018-22

MRP: 3800



FES2-T1011
Bracket Assy Mounting
(Engine-RH) Hydraulic
ECSPT 2018-22

MRP: 4400



FES2-T1021
Bracket Assy Mounting
(Engine-RH) Hydraulic
ECSPT 2018-22

MRP: 4800



FES2-T2100
Bracket Assy Mounting
(Torque Rod-RR)
ECSPT 2018-22

MRP: 2300

Rubber Parts



FES2-T2110
Bracket Assy Mounting
(Torque Rod-RR)
ECSVRT 2018-22

MRP: 1400



FES2-T2120
Bracket Assy Mounting
(Torque Rod-RR)
ECSVRT 2018-22

MRP: 1600



FES2-T2130
Bracket Assy Mounting
(Torque Rod-RR)
ECSVRT 2018-22

MRP: 2300



FFA-T1000
Bracket Assy Mounting
(Engine-FR)
FRD FIG ASPR

MRP: 2450



FFA-T2100
Bracket Assy Mounting
(Torque Rod-RR)
FRD FIG ASPR

MRP: 1800



FFA-T2110
Bracket Assy Mounting
(Torque Rod-RR)
FRD FIG ASPR

MRP: 1800



FFA-T1001
Bracket Assy Mounting
(Engine-RH) Hydraulic
FRD FIG 2ND GEN
ASP PTL

MRP: 3500



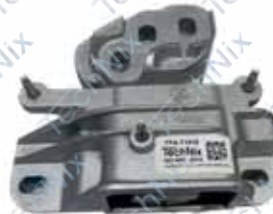
FFA-T1021
Bracket Assy Mounting
(Engine-RH) Hydraulic
FRD FIG 2ND GEN
ASP DSL

MRP: 3350



FFA-T1031
Bracket Assy Mounting
(Engine-RH)
FRD FIG ASP, ECSVRT
1.5L PTL
2018-22

MRP: 5000



FFA-T1010
Bracket Assy Mounting
(Engine-FR)
FRD FIG ASP, ECSVRT
2018-22

MRP: 3500



FFA-T1020
Bracket Assy Mounting
(Engine-FR)
FRD FIG ASP, ECSVRT
2018-22

MRP: 3500



FFA-T1030
Bracket Assy Mounting
(Engine-FR)
FRD FIG ASP, ECSVRT
2018-22

MRP: 4000

Engine Mounting

FES-A4100 Rubber Bushes -FR (4 Pcs)



FES-A4101 Bush Fr -FR

FES-A4105 Bush Rr -FR

FES2-A4000 - 6 Pcs

Rubber Bushes -FR

ECSVRT 2018-22



FES2-A4311 Bush (Bar-FR)

MRP: 1850

FFA-A4100 Rubber Bushes -FR (4 Pcs)

MRP: 1250



FFA-A4101 Bush Fr -FR

FFA-A4105 Bush Rr -FR



FFA-A4301

FFA-A4000 - 6 Pcs

(W/ FFA-A4301) **MRP: 1500**

FFA-A4010 - 6 Pcs

(W/ FFA-A4311) **MRP: 1600**



FFA-A4311

Rubber Bushes -FR
FRD FIG ASPR

FFA-A4600 - 3 Pcs



Protection Boot Kit -
FR W/Brg
FRD-ECSPT, FIES NM, ASPR

MRP: 1050



FFA-A5201

Bush RR Axle Arm

FRD FIG 2ND GEN
ASP DSL

MRP: 800



FED3-T1001

Bracket Assy Mounting
(Engine-RH) Hydraulic
ENDV TY3 16-

MRP: 5700



FED3-T1002

Bracket Assy Mounting
(Engine-LH)
ENDV TY3 16-

MRP: 5700



FED3-T1011

Bracket Assy Mounting
(Engine-RH) Hydraulic
ENDV TY3 16-

MRP: 6300



FED3-T1012

Bracket Assy Mounting
(Engine-LH)
ENDV TY3 16-

MRP: 6300



FED3-T2000

Bracket Assy Mounting
(Trans-LH)
ENDV TY3 16-

MRP: 3800



FED3-A4301

Rubber Bush Bar -FR

ENDV TY3 16-

MRP: 300

Rubber Parts



FIK-T1000
Bracket Assy Mounting
(Engine-FR)
FRD IKN 1.3L PTL (03-09)

MRP: 1450



FIK-T1001
Bracket Assy Mounting
(Engine-RH) Hydraulic
FRD IKN 1.8L DSL (99-03)

MRP: 2800



FIK-T1010
Bracket Assy Mounting
(Engine-FR)
FRD IKN 1.6L PTL (99-09)

MRP: 1450



FIK-T2100
Bracket Assy Mounting
(Torque-RR)
FRD-IKN

MRP: 1800



FIK-T1020
Bracket Assy Mounting
(Engine-FR)
FRD IKN 1.4L DSL

MRP: 1450



FIK-T2000
Bracket Assy Mounting
(Trans)
FRD-IKN

MRP: 3000

FIK-A4608M



FIK-A4608S - 2 Pcs
Mounting (Strut-FR)

FRD-IKN

MRP: 700

FIK-A4608R



FIK-A5608
Mounting (Strut-RR)

FRD-IKN

MRP: 600

FIK-A4100 Rubber Bushes -FR (4 Pcs)

MRP: 1250



FIK-A4101 Bush Fr -FR

FIK-A4105 Bush Rr -FR



FIK-A4301 Bush (Bar-RR)

FIK-A4000 - 6 Pcs

Rubber Bushes -FR

FRD-IKN

MRP: 1350

FIK-A4600 - 5 Pcs

Protection Boot Kit -
FR W/Brg
FRD-IKN



FIK-A4603
Boot

FIK-T4602
Bump Stopper -FR

MRP: 625



FIK-A5603
Boot

FIK-T5602
Bump Stopper -RR

FIK-A5600 - 4 Pcs

Protection Boot Kit -RR

FRD-IKN

MRP: 550



JPC-T1001
Bracket Assy Mounting
(Engine-RH) Hydraulic
COMP DSL

MRP: 5600



JPC-T1002
Bracket Assy Mounting
(Trans-LH)
COMP DSL

MRP: 4200



JPC-T2100
Bracket Assy Mounting
(Torque Rod RR)
COMP

MRP: 2400



JPC-T2110
Bracket Assy Mounting
(Torque Rod RR -Long)
COMP 4WD

MRP: 3500



JPC-T1011
Bracket Assy Mounting
(Engine-RH) Hydraulic
COMP PTL

MRP: 7000



JPC-T1012
Bracket Assy Mounting
(Trans-LH)
COMP PTL

MRP: 6000



JPC-T4608
Bracket Assy Mounting
(Strut-FR)
COMP

MRP: 1250



JPC-T5608 (R+L)
Bracket Assy Mounting
(Strut-RR) RH / LH
COMP

MRP: 6000

JPC-A4601 Protection Boot Kit -FR W/Brg (2 Pcs)

MRP: 800



JPC-A4603 Boot



JPC-T4602 Bump Stopper -FR



JPC-T4606 Bearing -FR

JPC-A4600 - 3 Pcs

Protection Boot Kit -
FR W/Brg
COMP

MRP:



JPC-A5600
Protection Boot Kit - RR
COMP

MRP: 900



JPC-A4301

JPC-A4301B
Rubber Bush W/Bkt
(Bar -FR)
COMP

MRP: 650

Rubber Parts

JPC-A4100 Rubber Bushes -FR (4 Pcs)

MRP: 1800



JPC-A4101 Bush Fr-FR

JPC-A4105 Bush Rr-FR



JPC-A4301B Bar-FR

JPC-A4000 - 6 Pcs

Rubber Bushes -FR

COMP

MRP: 2300



FPT-A4608L
W/Brg LH

FPT-A4608R
W/Brg RH

FPT-A4608

FPT-A4608 (R+L)
Mounting (Strut-FR)

W/Brg RH+LH

FIA PUNT, LIN

MRP: 2700



FPT-A5608

Bracket Assy Mounting
(Strut -RR)

FIA PUNT, LIN

MRP: 900



FPT-T2100

Bracket Assy Mounting
(Torque Rod RR)

FIA PUNT, LIN

MRP: 2000



FPT-T2110

Bracket Assy Mounting
(Torque Rod RR)

FIA PUNT, LIN

MRP: 2000



FPT-A5201

Bush RR Axle Arm

FIA PUNT, LIN

MRP: 1050



FPT-A5603
Boot



FPT-T5602
Bump Stopper-RR

FPT-A5600 - 2 Pcs

Protection Boot Kit -
RR

FIA PUNT, LIN

MRP: 525

FPT-A4601 Protection Boot Kit -FR W/o Brg (2 Pcs)

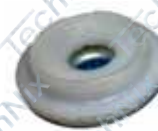
MRP: 630



FPT-A4603 Boot



FPT-T4602 Bump



FPT-A4606 Bearing

FPT-A4600 - 3 Pcs

Protection Boot Kit -
FR W/Brg

FIA PUNT, LIN

MRP: 1200

FPT-A4100 Rubber Bushes -FR (4 Pcs) MRP: 1650



FPT-A4101 Bush Fr-FR

FPT-A4105 Bush Rr-FR



FPT-A4301 Bar-FR

FPT-A4000 - 6 Pcs

Rubber Bushes -FR

FIA PUNT, LIN

MRP: 1850

Engine Mounting



GMH-T1021
Bracket Assy Mounting
(Engine-RH)
MG-HCTR DSL

MRP: 6500



GMH-T1022
Bracket Assy Mounting
(Trans-LH)
MG-HCTR DSL MT

MRP: 5500



GMH-T2120
Bracket Assy Mounting
(Torque-RR)
MG-HCTR

MRP: 3000



GMH-A4100
Rubber Bushes -FR
MG-HCTR

MRP: 1800



GMH-T4608
Bracket Assy Mounting
(Strut-FR)
MG-HCTR

MRP: 1500



GMH-T4606
Bearing Strut -FR
MG-HCTR

MRP: 1300



GMH-T5608
Bracket Assy Mounting
(Strut -RR)
MG-HCTR

MRP: 1000



GMH-A5809
Bump Stopper -RR
MG-HCTR

MRP: 250



GMH-T4602 Bump



GMH-A4601 - 4 Pcs

Protection Boot Kit -
FR
MG-HCTR

MRP: 800



GMH-A5600 - 4Pcs

Protection Boot Kit -
RR
MG-HCTR

MRP: 650

Rubber Parts



CBT-T1001
Bracket Assy Mounting
(Engine-RH)
CHV BET PTL

MRP: 3300



CBT-T1002
Bracket Assy Mounting
(Trans-LH)
CHV BET PTL

MRP: 3000



CBT-T2100
Bracket Assy Mounting
(Trans-RR)
CHV BET PTL

MRP: 2000



CBT-T2110
Bracket Assy Mounting
(Trans-RR)
CHV BET DSL

MRP: 2000



CBT-T1011
Bracket Assy Mounting
(Engine-RH) Hydraulic
CHV BET DSL

MRP: 3800



CBT-T2010
Bracket Assy Mounting
(Trans-LH)
CHV BET DSL

MRP: 3300



CBT-A4608P



CBT-A4608M



CBT-A4608R

CBT-A4608 (2 Pcs) MRP: 800

CBT-A4608S - 3 Pcs

Bracket Assy Mounting
(Strut-FR)
CHV BET

MRP: 900



CBT-A4603 Boot



CBT-T4602 Bump Stopper -FR



CBT-A4606 Bearing-FR

CBT-A4601 Protection Boot Kit -FR W/o Brg (2 Pcs)
MRP: 550

CBT-A4600 - 3 Pcs

Protection Boot Kit -
FR W/Brg
CHV BET

MRP: 630



CBT-T5602
Bump Stopper -RR

CBT-A5600 - 6 Pcs
Protection Boot Kit -RR
CHV BET

MRP: 700



CBT-A5201
Bush RR Axle Arm
CHV BET

MRP: 750

Engine Mounting

CBT-A4100 Rubber Bushes -FR (4 Pcs)

MRP: 1450



CBT-A4101 Bush Fr-RR



CBT-A4105 Bush Rr-RR



CBT-A4301 Bush (Bar-FR)

CBT-A4000 - 6 Pcs

Rubber Bushes -FR

CHV BET

MRP: 1750

CAV-A4100 Rubber Bushes -FR (4 Pcs)

MRP: 1100



CAV-A4101 Bush Fr-RR



CAV-A4105 Bush Rr-RR



CAV-A4301 ID 16 MM

CSA-A4301 ID 18 MM
Bush (Bar-FR)

CAV-A4000 - 6 Pcs

Rubber Bushes -FR

CHV AVO MRP: 1200

CSA-A4000 - 6 Pcs

Rubber Bushes -FR

CHV SAIL MRP:



CAV-A4603 Boot



CAV-T4602 Bump



CAV-A4606 Bearing

CAV-A4600 - 4 Pcs

Protection Boot Kit -FR
W/Brg

CHV AVO, SAIL

MRP: 660



CAV-T5602 Bump Stopper -RR

CAV-A5600 - 6 Pcs

Protection Boot Kit -RR

CHV-AVO, SPK, SAIL

MRP: 875



CSP-A4603 Boot



CSP-T4602 Bump



CAV-A4606 Bearing

CSP-A4600 - 4 Pcs

Protection Boot Kit -
FR W/Brg

CHV SPK

MRP: 600

CAV-A4608M
MRP: 300



CAV-A4608R
MRP: 120

CAV-A4608S - 2 Pcs

Mounting (Strut-FR)

CHV AVO, SPK, SAIL

MRP: 400

CAV-A4618M
MRP: 225



CAV-A4608R
MRP: 120

CAV-A4618S - 2 Pcs

Mounting (Strut-FR)

CHV AVO, SPK, SAIL

MRP: 320

Rubber Parts



CAV-T1001
Bracket Assy Mounting
(Engine-RH)
CHV AVO

MRP: 3250



CAV-T2000
Bracket Assy Mounting
(Trans-LH)
CHV AVO

MRP: 3250



CAV-T2100
Bracket Assy Mounting
(TorqueRod A)
CHV AVO

MRP: 2300



CSA-T2100
Bracket Assy Mounting
(Trans-RR)
CHV SAIL 1.2L PTL

MRP: 2000



CSA-T1001
Bracket Assy Mounting
(Engine-RH)
CHV SAIL 1.2L PTL

MRP: 3350



CSA-T1002
Bracket Assy Mounting
(Trans-LH)
CHV SAIL 1.2L PTL

MRP: 3350



CSA-T1021
Bracket Assy Mounting
(Engine-RH)
CHV SAIL 1.3L-DSL

MRP: 3800



CSA-T1022
Bracket Assy Mounting
(Trans-LH)
CHV SAIL 1.3L-DSL

MRP: 3600



CSA-T2120
Bracket Assy Mounting
(Trans-RR)
CHV SAIL 1.3L-DSL

MRP: 3400



CSP-T2100

CSP-T2101

CSP-T2100 / T2101
Bracket Assy Mounting
(Torque Rod-R)
Bracket Assy Mounting
(Torque-RR)
CHV SPK
MRP: 2600 / 900



CSP-T1001
Bracket Assy Mounting
(Engine-RH)
CHV SPK

MRP: 2600



CSP-T1002
Bracket Assy Mounting
(Trans-LH)
CHV SPK

MRP: 2300

Engine Mounting



COP-T1001
Bracket Assy Mounting
(Engine-RH) Hydraulic
CHV OPTR

MRP: 2800



COP-T2000
Bracket Assy Mounting
(Trans-LH)
CHV OPTR

MRP: 3300



COP-T2100
Bracket Assy Mounting
(A Rod-Lwr)
CHV OPTR

MRP: 3000



COP-T2101
Bracket Assy Mounting
(A Rod-RR)
CHV OPTR

MRP: 2300



COP-T1020
Bracket Assy Mounting
(Trans-FR)
CHV OPTR MGNM

MRP: 5400



COP-T2020
Bracket Assy Mounting
(Trans-RR)
CHV OPTR MGNM

MRP: 3100



COP-A4603



COP-T4602 Bump



COP-A4606 Bearing -FR

COP-A4600 - 4 Pcs
Protection Boot Kit -FR
W/Brg
CHV OPTR

MRP: 660



COP-A5600 - 4 Pcs
Protection Boot Kit -RR
CHV OPTR

MRP: 860



COP-T5602
Bump Stopper -RR

COP-T5608
Bracket Assy Mounting
(Strut-RR)
CHV OPTR

MRP: 1300



COP-A4608R
Retainer
MRP: 270



COP-A4608M
Mounting
MRP: 560

COP-A4608S - 2 Pcs
Mounting (Strut-FR)
W/Retainer
CHV OPTR

MRP: 820

Rubber Parts



CCZ-T1000
Bracket Assy Mounting
(Trans-FR)
CHV CRZ'08-15
TY-1 MT
MRP: 3000



CCZ-T1010
Bracket Assy Mounting
(Trans-FR)
CHV CRZ'08-15
TY-1 AT
MRP: 4400



CCZ-T1001
Bracket Assy Mounting
(Engine-RH)
CHV CRZ'08-15
TY-1 MT/AT
MRP: 5400



CCZ-T1002
Bracket Assy Mounting
(Trans-LH)
CHV CRZ'08-15
TY-1 MT
MRP: 5400



CCZ-T2100
Bracket Assy Mounting
(Trans-RR)
CHV CRZ'08-15
TY-1, TY-2
MRP: 2600



CCZ-T1012
Bracket Assy Mounting
(Trans-LH)
CHV CRZ'08-15
TY-1 AT
MRP: 5200



CCZ-T1021
Bracket Assy Mounting
(Engine-RH)
CHV CRZ'08-15
TY-2
MRP: 6000



CCZ-T1022
Bracket Assy Mounting
(Trans-LH)
CHV CRZ'08-15
TY-2
MRP: 6000



CCZ-T1020
Bracket Assy Mounting
(Trans-FR)
CHV CRZ'08-15
TY-2
MRP: 4400



CCZ-T5201
Mounting (RR Axle Arm)
CHV CRUZ
MRP: 1700



CCZ-T4100 Bracket Mounting (Control Arm-FR) 4Pc
MRP: 4400

CCZ-T4101 Control Arm-FR

CCZ-T4105 Control Arm-RR



CCZ-T4301
Bush (Bar-FR) ID=25mm

CCZ-T4000 - 6 Pcs
Bracket Mounting
(Control Arm-FR)
CHV CRUZ

MRP: 4800

Engine Mounting



CCZ-T4608
Bracket Assy Mounting
(Strut-FR)
CHV CRUZ

MRP: 1300



CCZ-T5608
Bracket Assy Mounting
(Strut-RR)
CHV CRUZ

MRP: 1150



CCZ-A5600 - 4 Pcs
Protection Boot Kit -RR
CHV CRUZ

MRP: 825

CCZ-T5602
Bump Stopper -RR



CCZ-A4603 Boot



CCZ-T4602 Bump Stopper -FR



CCZ-A4601 - 3 Pcs

Protection Boot Kit -
FR W/o Brg
CHV CRUZ

MRP: 825



CCP-A4601 Protection Boot Kit -FR W/o Brg (4 Pcs)

MRP: 850

CCP-A4603 Boot

CCP-T4602 Bump Stopper -FR



CCP-T4606 Bearing -FR

CCP-A4600 - 5 Pcs

Protection Boot Kit -
FR W/Brg
CHV CPTV

MRP: 2100



CCP-A5603
Boot

CCP-A5600 - 3 Pcs
Protection Boot Kit -RR

CHV CPTV



CCP-T5602
Bump Stopper -RR

MRP: 925



CCP-T5000 - 16 Pcs

Mounting Kit
(Control Arm-RR)
CHV CPTV

MRP: 8000

CCP-T4100 Bracket Mounting (Control Arm-FR) 4Pc

MRP: 4200



CCP-T4101 Control Arm-FR



CCP-T4105M Control Arm-RR



CCP-T4301
Bush (Bar-FR) ID=25mm

CCP-T4000 - 6 Pcs

Bracket Mounting
(Control Arm-FR)
CHV CPTV

MRP: 4600

Rubber Parts



CCP-T1000
Bracket Assy Mounting
(Trans-FR)
CHV CPTV MT
TY-1 06-11
MRP: 3900



CCP-T1010
Bracket Assy Mounting
(Trans-FR)
CHV CPTV AT
TY-1 06-11
MRP: 4000



CCP-T1001
Bracket Assy Mounting
(Engine-RH)
CHV CPTV
TY-1 06-11
MRP: 3900



CCP-T2000
Bracket Assy Mounting
(Trans-RR)
CHV CPTV
TY-1 06-11
MRP: 3900



CCP-T2100
Bracket Assy Mounting
(Transmission)
CHV CPTV MT
TY-1 06-11
MRP: 3900



CCP-T2110
Bracket Assy Mounting
(Transmission)
CHV CPTV AT
TY-1 06-11
MRP: 4000



CCP-T1020
Bracket Assy Mounting
(Trans-FR)
CHV CPTV
TY-2 12-18
MRP: 5000



CCP-T2120
Bracket Assy Mounting
(Transmission)
CHV CPTV
TY-2 12-18
MRP: 5000



CCP-T1021
Bracket Assy Mounting
(Engine-RH)
CHV CPTV
TY-2 12-18
MRP: 5000



CCP-T2020
Bracket Assy Mounting
(Trans-RR)
CHV CPTV
TY-2 12-18
MRP: 5000



CCP-T1000B
Bracket Assy Mounting -
FR/RR CHV CPTV
MRP: 2500



CCP-T4608
Bracket Assy Mounting
(Strut-FR) CHV CPTV
MRP: 1900



CCP-T3600
Bracket Assy Mounting
(Prop Shaft Brg) CHV CPTV
MRP: 3900

Engine Mounting



CEN-T1001

CEN-T1001
Bracket Assy Mounting
(Trans-RH)
CHV ENJY DSL
MRP: 1150



CEN-T1002
MRP: 1150

CEN-T1000 - (R+L)
CEN-T1002
Bracket Assy Mounting
(Trans-LH)
CHV ENJY DSL
MRP: 2300



CEN-T2000
Bracket Mounting
(Trans-RR) 4Pc
CHV ENJY DSL

MRP: 1400



CEN-T2010
Bracket Assy Mounting
(Trans-RR)
CHV ENJY PTL

MRP: 1400



CEN-T3600
Bracket Assy Mounting
(Prop Shaft Brg)
CHV ENJY

MRP: 2000



CEN-A4608
Mounting (Strut-FR)
CHV ENJY

MRP: 820

CEN-A4100 Rubber Bushes -FR (4 Pcs)
MRP: 1500



CEN-A4101 Bush Fr-FR



CEN-A4105 Bush Fr-RR



CEN-A4301
Bush (Bar-FR) ID=17mm

CEN-A4000 - 6 Pcs
Rubber Bushes -FR
CHV ENJY

MRP: 1600



CEN-A4603 Boot



CEN-T4602 Bump Stopper -FR



CEN-A4606 Bearing -FR

CEN-A4600 - 4 Pcs
Protection Boot Kit -
FR W/Brg
CHV ENJY

MRP: 750



CEN-A5600 - 3 Pcs
Protection Boot Kit -RR
CHV ENJY

MRP: 800



CEN-A5000 - 10 Pcs
Rubber Bushes -RR
CHV ENJY

MRP: 2900

Rubber Parts



RDS-T1001
Bracket Assy Mounting
(Engine-RH) Hydraulic
R-DSTR, LDGY
N-TRNO
DSL **MRP: 4500**



RDS-T1011
Bracket Assy Mounting
(Engine-RH) Hydraulic Alum
R-DSTR, LDGY
N-TRNO
DSL **MRP: 5200**



RDS-T1021
Bracket Assy Mounting
(Engine-RH)
R-DSTR, CAPTR
N-TRNO
NM,PTL
MRP: 5100



RDS-T1031
Bracket Assy Mounting
(Engine-RH) Hydraulic
R-DSTR, N-TRNO PTL OM
MRP: 5400



RDS-T1041
Bracket Assy Mounting
(Engine-RH)
R-DSTR
N-TRNO
PTL **MRP: 5400**



RDS-T2100
Bracket Assy Mounting
(Torque Rod RR)
R-DSTR, LDGY
N-TRNO
MRP: 1550



RDS-T1002
Bracket Assy Mounting
(Engine-LH)
R-DSTR, LDGY
N-TRNO
MRP: 1200



RDS-T1012
Bracket Assy Mounting
(Engine-LH)
R-DSTR, LDGY
N-TRNO
MRP: 1600



RDS-T2110
Bracket Assy Mounting
(Torque Rod RR)
R-DSTR, LDGY
N-TRNO
MRP: 1050



RDS-T2111
Bracket Assy Mounting
(Trans-RR)
R-DSTR, LDGY
N-TRNO
MRP: 1800

RDS-A4100 Rubber Bushes -FR (4 Pcs)

MRP: 1180



RDS-A4000 - 6 Pcs

Rubber Bushes -FR

R-DSTR
N-TRNO

MRP: 1300



RDS-A4301
Bush (Bar-FR) ID=20mm

Engine Mounting



RLG-T1001
Bracket Assy Mounting
(Engine-RH) Hydraulic
R-LOGN
M-VRITO
MRP: 3300



RLG-T1002
Bracket Assy Mounting
(Engine-LH)
R-LOGN
M-VRITO
MRP: 800



RLG-T2100
Bracket Assy Mounting
(Torque Rod RR)
R-LOGN
M-VRITO
MRP: 1250



RLG-T2110
Bracket Assy Mounting
(Torque Rod)-Alum
R-LOGN
M-VRITO
MRP: 2000



RLG-T1011
Bracket Assy Mounting
(Engine-RH)
R-LOGN PTL
MRP: 2800

RLG-A4100 Rubber Bushes -FR (4 Pcs)
MRP: 1050



RLG-A4000 - 6 Pcs

Rubber Bushes -
FR
R-LOGN, LDGY
M-VRITO



RLG-A4301
Bush (Bar-FR) ID=23mm

MRP: 1150

RLG-A4300M Rubber Kit (Link Rod-FR) - 4Pcs
MRP: 480



RLG-A4301 Bush (Bar-FR) ID=23mm

RLG-T4400 Bar -FR

RLG-A4000M - 8 Pcs

Rubber Bushes -FR
W/Link
R-LOGN, LDGY
M-VRITO



RLG-A4100 Bush-FR

MRP: 1450

RDS-A4600 Protection Boot Kit -FR W/Brg (2 Pcs)
MRP: 390



RDS-A4602 Bump Stopper -FR **RDS-A4606** Bearing -FR

RDS-A4600N - 3 Pcs

Protection Boot Kit -
FR W/Brg/nut
R-LOGN, DSTN
N-TRNO, VRITO



RDS-A4606N Nut

MRP: 525

Rubber Parts



RDS-A4610
Protection Boot Kit - FR
R-DSTR, LOGN, LDGY
M-VRITO
MRP: 700



RDS-A4608M MRP: 490
RDS-A4608R MRP: 150

RDS-A4608S
Mounting (Strut-FR)
W/Retainer
R-LOGN, DSTR, LDGY
N-TRNO, VRITO
MRP: 560



RDS-A5201
Bush RR Axle Arm
R-LOGN, DSTR,
N-TRNO, VRITO
MRP: 600



RLY-A5201
Bush RR Axle Arm
R-LDGY
MRP: 900

RLG-A4300M Rubber Kit (Link Rod-FR) - 4Pcs
MRP:



RLG-A4301 Bush (Bar-FR) ID=23mm
RLG-T4400 Bar -FR

RLY-A4000M - 8 Pcs



Rubber Bushes -FR
W/Link
R-LDGY

RLY-A4100 Bush-FR

MRP: 1450



RDS-A5603 Boot



RDS-T5602 Bump Stopper -RR

RDS-A5600 - 11 Pcs
Bracket Assy Mounting
(Engine-FR)
R-LOGN, DSTR, LDGY
N-TRNO, VRITO

MRP: 800



RLG-A6000S
Strng Boot Set Synth



RLG-A6401
Axle Boot WS

LGN BELLOWS



RLG-A6405
Axle Boot DS



RLG-A6405P
Axle Boot DS W/Plate



RLG-A6405B
Axle Boot DS W/Brg



RTR-T1001
Bracket Assy Mounting
(Engine-RH)
REN-TRBR

MRP: 2600



RTR-T1002
Bracket Assy Mounting
(Engine-LH)
REN-TRBR

MRP: 2600



RTR-T2100
Bracket Assy Mounting
(Torque Rod)
REN-TRBR

MRP: 800



RTR-T2110
Bracket Assy Mounting
(Torque Rod)-Alum
REN-TRBR

MRP: 1000

RTR-A4608M



RTR-A4608S
Mounting (Strut-FR)
REN-TRBR

RTR-A4608R

MRP: 525



RTR-A4600
Protection Boot Kit -
FR W/Brg
REN-TRBR

MRP: 400

RTR-A4105
Bush Rr-FR



RTR-A4100 - 4 Pcs

Rubber Bushes -FR

REN-TRBR

MRP: 1150

RTR-A4101 Bush Fr-FR



RKW-T1001
Bracket Assy Mounting
(Engine-RH)
REN-KWD 800
DATS-RED GO
MRP: 1050



RKW-T1002
Bracket Assy Mounting
(Engine-LH)
REN-KWD 800
DATS-RED GO
MRP: 1050



RKW-T2100
Bracket Assy Mounting
(Torque Rod RR)
REN-KWD 800
DATS-RED GO
MRP: 680



RKW-T2110
Bracket Assy Mounting
(Torque Rod RR)
REN-KWD 1000
DATS-RED GO
MRP: 800



RKW-T1011
Bracket Assy Mounting
(Engine-RH) Alum Bkt
REN-KWD 1000
DATS-RED GO
MRP: 1100



RKW-T1012
Bracket Assy Mounting
(Engine-LH)
REN-KWD 1000
DATS-RED GO
MRP: 1100



RKW-T1031
Bracket Assy Mounting
(Engine-RH) Steel Bkt
REN-KWD 1000
DATS-RED GO
MRP: 1100



RKW-A4608
Mounting (Strut-FR)
REN-KWD
DATS-RED GO
MRP: 350

RKW-A4601 Protection Boot Kit -FR (2 Pcs)
MRP: 425



RKW-A4603 Boot



RKW-T4602 Bump



RKW-A4606 Bearing -FR

RKW-A4600 - 3 Pcs

Protection Boot Kit -
FR W/Brg
REN-KWD
DATS-RED GO

MRP: 850

RKW-A4100 - 4 Pcs

Rubber Bushes -FR



RKW-A4101
MRP: 300



RKW-A4105
MRP: 380



REN-KWD
DATS-RED GO

MRP: 630



RKW-A5600
Protection Boot Kit -RR

REN-KWD
DATS-RED GO

MRP: 575



RFL-T1001
Bracket Assy Mounting
(Engine-RH) Hydraulic
FLUNC DSL

MRP: 7500



RFL-T1002
Bracket Assy Mounting
(Engine-LH)
FLUNC DSL

MRP: 7500



RFL-T2100
Bracket Assy Mounting
(Torque Rod RR-LWR)
FLUNC DSL

MRP: 3600



RFL-T2101
Bracket Assy Mounting
(Torque Rod RR-UPR)
FLUNC DSL

MRP: 3300



RFL-T1011
Bracket Assy Mounting
(Engine-RH) Hydraulic
FLUNC PTL

MRP: 8500



RFL-T2110
Bracket Assy Mounting
(Torque Rod RR-LWR)
FLUNC PTL

MRP: 4500



RFL-A4608
Mounting (Strut-FR)
FLUNC

MRP: 1500



RFL-T4606
Bearing Strut-FR
FLUNC

MRP: 1600



RFL-A4601
Protection Boot Kit -FR
FLUNC

MRP: 700



NTE-T2100
Bracket Assy Mounting
(Torque-Rr)
N-TENA

MRP: 3900



NMI-T1011
Bracket Assy Mounting
(Engine-RH) Hydraulic
N-MICR
R-PULS
1.2L PTL
MRP: 4700



NMI-T1012
Bracket Assy Mounting
(Engine-LH)
N-MICR
R-PULS
DTSN-GO
1.2L PTL **MRP: 1300**



NSU-T1001
Bracket Assy Mounting
(Engine-RH)
N-SUNY 1.5L PTL
MRP: 4500



NSU-T1002
Bracket Assy Mounting
(Engine-LH)
N-MICR, SUNY
R-PULS, SCLA
1.5L **MRP: 1100**



NSU-T1021
Bracket Assy Mounting
(Engine-RH) Hydraulic
N-MICR, SUNY
R-PULS, SCLA
1.5L DSL
MRP: 6300



NSU-T2110
Bracket Assy Mounting
(Torque Rod)
N-MICR, SUNY
R-PULS, SCLA
1.5L **MRP: 1500**



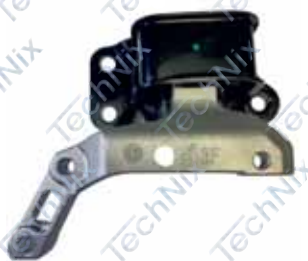
NMI-T1021
Bracket Assy Mounting
(Engine-RH) Hydraulic
N-MICR, SUNY
R-PULS, SCLA
1.5L DSL
MRP: 6300



NMI-T2100
Bracket Assy Mounting
(Torque Rod)
N-MICR
R-PULS
DTSN-GO
1.2L PTL **MRP: 1450**



NMI-T1001
Bracket Assy Mounting
(Engine-RH) Hydraulic
N-MICR, SUNY
R-PULS, SCLA
MRP: 3500



DGO-T1001
Bracket Assy Mounting
(Engine-RH)
DTSN-GO
MRP: 3700

NMI-A4608M
Mount **MRP: 370**



NMI-A4608S - 2 Pcs

Mounting (Strut-FR)
W/Retainer
N-MICR, SUNY
R-PULS, SCLA
DATS-GO

NMI-A4608R
Retainer **MRP: 120**



MRP: 470



NMI-A5201
Bush RR Axle Arm

N-MICR, SUNY
R-PULS, SCLA
DATS-GO

MRP: 600

Engine Mounting



NMI-A4602 Boot
NMI-A4606 Bearing-FR

NMI-A4600 - 2 Pcs

Protection Boot Kit -
FR W/Brg
N-MICR, SUNY
R-PULS, SCLA
DATS-GO

MRP: 420



NMI-A5600 - 4 Pcs

Protection Boot Kit -
RR
N-MICR, SUNY
R-PULS, SCLA
DATS-GO

MRP: 600

NMI-A4100 Rubber Bushes -FR (4 Pcs)

MRP: 1100



NMI-A4101 Bush Fr-FR



NMI-A4105 Bush Rr-FR



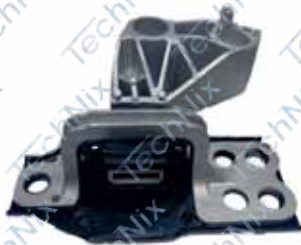
NMI-A4301
Bush (Bar-FR) ID=18mm

NMI-A4000 - 6 Pcs

Rubber Bushes -FR

N-MICR, SUNY
R-PULS, SCLA
DATS-GO

MRP: 1250



RKO-T1001

Bracket Assy Mounting
(Engine-RH) Hydraulic
N-XTRL, R-KOLS

MRP: 8000



RKO-T1100

Bracket Assy Mounting
(Torque Rod -FR)
N-XTRL, R-KOLS

MRP: 4500



RKO-T2100

Bracket Assy Mounting
(Torque Rod -RR)
N-XTRL, R-KOLS

MRP: 6000



NXT-T4608

Bracket Assy Mounting
(Strut-FR) Set R/L
N-X-TRL, R-KOLS

MRP: 3800



NXT-T4606

Bearing Strut-FR

N-XTRL, EVAL
R-KOL

MRP: 1300



NEV-T4608

Bracket Assy Mounting
(Strut-FR) Set R/L

EVLA

MRP: 4000



NXT-T3000 - 4 Pcs

Bracket Assy Mounting
(Subframe)

N-XTRL, R-KOLS

MRP: 4600



NXT-T1000

Bracket Assy Mounting
(Engine-FR)

N-XTR

MRP: 2200



HC3-T1000
Bracket Assy Mounting
(Engine-FR)
CTY-T3 02-07

MRP: 1100



HC3-T2000
Bracket Assy Mounting
(Engine-RR)
CTY-T3 02-07

MRP: 1100



HC3-T1001
Bracket Assy Mounting
(Engine-RH) Hydraulic
CTY-T3 02-07 MT

MRP: 2000



HC3-T2100
Bracket Assy Mounting
(Transmission)
CTY-T3 02-07 MT

MRP: 1500



HC3-T1011
Bracket Assy Mounting
(Engine-RH) Hydraulic
CTY-T3 02-07 AT

MRP: 2200



HC3-T2110
Bracket Assy Mounting
(Transmission)
CTY-T3 02-07 AT

MRP: 2000

HC5-A4608M



HC5-A4608R

HC5-A4608S - 2 Pcs

Mounting (Strut-FR)
W/Retainer
CTY-T3 02-07
CTY-T5, JAZ-T2 08-13

MRP: 520



HC3-A4602
Boot



HC3-A4606
Bearing -FR

HC3-A4600 - 2 Pcs

Protection Boot Kit -
FR W/Brg
CTY-T3 02-07
CTY-T5, JAZ-T2 08-13
AMZ, BRI, MOBL

MRP: 460



HC3-A5600 - 6 Pcs

Protection Boot Kit -RR

CTY-T3 02-07

MRP: 600



HC3-A5201

Bush RR Axle Arm

CTY-T3 02-07

MRP: 775

HC3-A4100 Rubber Bushes -FR (4 Pcs)

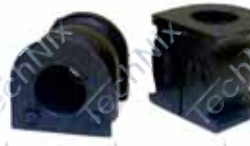
MRP: 1100



HC3-A4101 Bush Fr-FR



HC3-A4105 Bush Rr -FR



HC3-A4301
Bush (Bar-FR) ID=20mm

HC3-A4000 - 6 Pcs

Rubber Bushes -FR

CTY-T3 02-07

MRP: 1250

Engine Mounting



HC5-T1001
Bracket Assy Mounting
(Engine-RH) Hydraulic
CTY-T5, JAZ-T2 08-13

MRP: 2950



HC5-A5201
Bush RR Axle Arm
CTY-T5, JAZ-T2 08-13

MRP: 950



HC5-T2000
Bracket Assy Mounting
(Trans-LH)
CTY-T5, JAZ-T2 08-13 - MT

MRP: 3100



HC5-T2100
Bracket Assy Mounting
(Torque Rod)
CTY-T5, JAZ-T2 08-13 - MT

MRP: 2400



HC5-T2010
Bracket Assy Mounting
(Trans-LH)
CTY-T5, JAZ-T2, AMZ-T1 - AT

MRP: 3400



HC5-T2110
Bracket Assy Mounting
(Torque Rod)
CTY-T5, JAZ-T2 08-13 - AT

MRP: 2400



MRP: 450

HC5-A4608S - 2 Pcs
Mounting (Strut-FR)
W/Retainer
CTY-T3 04-07
CTY-T5, JAZ-T2 08-13

HC5-A4608R
MRP: 110

MRP: 520

HC5-A5603
Boot



HC5-A5600 - 5 Pcs
Protection Boot Kit -RR
CTY-T5, JAZ-T2 08-13

MRP: 725

HC5-T5602
Bump -RR



HC5-A4100 Rubber Bushes -FR (4 Pcs)

MRP: 1400



HC5-A4101 Bush Fr -FR



HC5-A4105 Bush Rr -FR



HC5-A4301
Bush (Bar-FR) ID=18mm

HC5-A4000 - 6 Pcs

Rubber Bushes -FR

CTY-T5, JAZ-T2 08-13

MRP: 1550



HC5-A4603 Boot



HC5-T4602 Bump Stopper -FR



HC5-A4606 Bearing -FR

HC5-A4600 - 3 Pcs

Protection Boot Kit -
FR W/Brg

CTY-T5, JAZ-T2 08-13 ,
AMZ-T1, BRI, MOBIL

MRP: 550

Rubber Parts



HC6-T1001
Bracket Assy Mounting
(Engine-RH) Hydraulic
CTY-T6, JAZ-3
WRV-T1- PTL
MRP: 3250



HC6-T1002A
Bracket Assy Mounting
(Trans-LH)
CTY-T6, JAZ-3
WRV-T1- PTL
MRP: 1700



HC6-T1002
Bracket Assy Mounting
(Trans-LH) W/Alum
CTY-T6, JAZ-3
WRV-T1- PTL, MT
MRP: 4000



HC6-T1012
Bracket Assy Mounting
(Trans-LH) W/Alum
CTY-T6, JAZ-3
WRV-T1- PTL, AT
MRP: 3400



HC6-T2100
Bracket Assy Mounting
(Torque Rod)
CTY-T6, JAZ-3
WRV-T1- PTL, MT
MRP: 2400



HC6-T2110
Bracket Assy Mounting
(Torque Rod)
CTY-T6, JAZ-3
WRV-T1- PTL, AT
MRP: 2400



HC6-T1021
Bracket Assy Mounting
(Engine-RH) Hydraulic
CTY-T6, JAZ-3
AMZ TY-2 DSL
MRP: 3300



HWR-T1021
Bracket Assy Mounting
(Engine-RH)
WRV-T1 DSL
MRP: 4500



HC6-T1022A
Bracket Assy Mounting
(Trans-LH)
CTY-T6, JAZ-3
WRV-T1- DSL
MRP: 1800



HC6-T2120
Bracket Assy Mounting
(Torque Rod)
CTY-T6, JAZ-3
WRV-T1- DSL
MRP: 2400



HZ2-T1022A
Bracket Assy Mounting
(Engine-RH)
AMZ TY-2 DSL
MRP: 1900



HZ2-T2100
Bracket Assy Mounting
(Engine-RH)
AMZ TY-2 DSL
MRP: 2000



HC5-A4603 Boot



HC6-T4602 Bump Stopper -FR



HC5-A4606 Bearing -FR

HC6-A4600 - 3 Pcs

Protection Boot Kit -
FR W/Brg
CTY-T6, JAZ-3
WR 14

MRP: 550

HC6-A4608M



HC6-A4608R

HC6-A4608S

Bracket Assy Mounting
(Strut-FR)

CTY-T6, WRV-T1
Replaces HZ1-A4608S

MRP: 520



HC6-A5201

Bush RR Axle Arm

CTY-T6, WRV-T1

MRP: 1000

HZ2-A4608M



HZ2-A4608R

HZ2-A4608S

Bracket Assy Mounting
(Strut-FR)

AMZ TY-2 DSL

MRP: 540

HC6-A4100 Rubber Bushes -FR (4 Pcs)

MRP: 1300



HC6-A4101 Bush Fr -FR



HC6-A4105 Bush Rr -FR



HC6-A4301
Bush (Bar-FR) ID=18mm

HC6-A4000 - 6 Pcs

Rubber Bushes -FR

CTY-T6, JAZ-3, WR 14-

MRP: 1500

HWR-A4100 Rubber Bushes -FR (4 Pcs)

MRP: 1400



HWR-A4101 Bush Fr- FR



HWR-A4105 Bush Rr- FR



HWR-A4301
Bush (Bar-FR) ID=20mm

HWR-A4000 - 6 Pcs

Rubber Bushes -FR

WRV

MRP: 1600



HZ1-T1001
Bracket Assy Mounting
(Engine-RH) W/Alum
AMZ, BRV, BRI, MOBIL
PTL
MRP: 4200



HZ1-T1001A
Bracket Assy Mounting
(Engine-RH)
AMZ, BRV, BRI, MOBIL
PTL
MRP: 2850



HZ1-T1002
Bracket Assy Mounting
(Trans-LH)
AMZ, BRV, BRI, MOBIL
PTL
MRP: 3500



HZ1-T2100
Bracket Assy Mounting
(Torque Rod)
AMZ, BRV, BRI, MOBIL
PTL
MRP: 1700



HZ1-T1011
Bracket Assy Mounting
(Engine-RH) Hydraulic W/Alum
AMZ, BRV, BRI, MOBIL
DSL
MRP: 4600



HZ1-T1011A
Bracket Assy Mounting
(Engine-RH) Hydraulic
W/o Alum
AMZ, BRV, BRI, MOBIL
DSL
MRP: 2900



HZ1-T1012
Bracket Assy Mounting
(Trans-LH)
AMZ, BRV, BRI, MOBIL
DSL
MRP: 2900



HZ1-T2110
Bracket Assy Mounting
(Torque Rod)
AMZ, BRV, BRI, MOBIL
DSL
MRP: 2000



HC5-A4600 - 3 Pcs
Protection Boot Kit -
FR W/brg
CTY-T5, JAZ-T2 08-13,
AMZ-T1, BRI, MOBIL
MRP: 550



HC5-A4608M **MRP: 450**
HZ1-A4608S - 2 Pcs
Mounting (Strut-FR)
W/Retainer
AMZ, BRV, BRI, MOBIL
MRP: 520

HZ1-A4608R
MRP: 110



HZ1-A5600 - 4 Pcs
Protection Boot Kit -RR
AMZ, BRO-T1 13-17
MRP: 550



HZ1-A5201
Bush RR Axle Arm
AMZ, BRV, BRI, MOBIL
MRP: 1050

Engine Mounting

HZ1-A4100 Rubber Bushes -FR (4 Pcs)

MRP: 1250



HZ1-A4101 Bush Fr -FR

HZ1-A4105 Bush Rr -FR

HZ1-A4000 - 6 Pcs

Rubber Bushes -FR

AMZ-T1



MRP: 1400

HZ1-A4100 Rubber Bushes -FR (4 Pcs)

MRP: 1250



HZ1-A4101 Bush Fr- FR

HZ1-A4105 Bush Rr- FR

HBR-A4000 - 6 Pcs

Rubber Bushes -FR

BRIO 11-20



MRP: 1450

HZ1-A4100 Rubber Bushes -FR (4 Pcs)

MRP: 1250



HZ1-A4101 Bush Fr- FR

HZ1-A4105 Bush Rr- FR

HMB-A4000 - 6 Pcs

Rubber Bushes -FR

MOBIL 14-17



MRP: 1400



HCK2-T1001

Bracket Assy Mounting
(Engine-RH)
CVK PTL 19-20

MRP: 8700



HCK2-T1021

Bracket Assy Mounting
(Engine-RH)
CVK DSL 19-20

MRP: 9000



HCK2-T1002

Bracket Assy Mounting
(Trans-LH)
CVK PTL 19-20

MRP: 8000



HCK2-T2100

Bracket Assy Mounting
(Trans-RR)
CVK 19-20

MRP: 3000



HCK2-T4608

Bracket Assy Mounting
(Strut-FR)
CVK 19-20

MRP: 1750



HCK2-T5608

Bracket Assy Mounting
(Strut-RR)
CVK 19-20

MRP: 2700

Rubber Parts



HCK-T1001
Bracket Assy Mounting
(Engine-RH) Hydraulic
CVK 05-11

MRP: 3600



HCK-T1012
Bracket Assy Mounting
(Trans-LH)
CVK 05-11

MRP: 2800



HCK-T2100
Bracket Assy Mounting
(Torque) Big
CVK 05-11 MT

MRP: 2700



HCK-T2101
Bracket Assy Mounting
(Torque) Small
CVK 05-11 MT

MRP: 2700



HCK-T2110
Bracket Assy Mounting
(Torque) Big
CVK 05-11 AT

MRP: 2700



HCK-T2111
Bracket Assy Mounting
(Torque) Small
CVK 05-11 AT

MRP: 2700



HCK-T1011
Bracket Assy Mounting
(Engine-RH) Hydraulic
CVK 05-11 HYBRID

MRP: 6500



HCK-T4608
Bracket Assy Mounting
(Strut-FR)
CVK 05-11

MRP: 1150

HCK-A4100 Rubber Bushes -FR (4 Pcs)

MRP: 1400



HCK-A4101 Bush Fr- FR



HCK-A4105 Bush Rr- FR



HCK-A4301
Bush (Bar-FR) ID=20mm

HCK-A4000 - 6 Pcs

Rubber Bushes -FR

CVK 05-11

MRP: 1550

HCK-A4601 Protection

Boot Kit -FR RH/LH

MRP: 775



HCK-A4603
Boot



HCK-T4602
Rubber Bush



HCK-A4606
Bearing

HCK-A4600 - 3 Pcs

Protection Boot Kit -
FR W/Brg RH/LH

CVK 05-11

MRP: 1500



HCK-A5600 - 6 Pcs

Protection Boot Kit -RR

CVK 05-11

MRP: 990



HA1-T1000
Bracket Assy Mounting
(Engine-FR)
ACRD 2.4L 03-07

MRP: 3200



HA1-T2000
Bracket Assy Mounting
(Engine-RR)
ACRD 2.4L 03-07

MRP: 3200



HA1-T1001
Bracket Assy Mounting
(Engine-RH) Hydraulic
ACRD 2.4L 03-07

MRP: 2500



HA1-T2100
Bracket Assy Mounting
(Trans-UPR)
ACRD 2.4L 03-07

MRP: 1350



HA1-T2101
Bracket Assy Mounting
(Trans-FR)
ACRD 2.4L 03-07

MRP: 1250



HA1-T2102
Bracket Assy Mounting
(Trans-RR)
ACRD 2.4L 03-07

MRP: 1250



HA1-T3000 - 4 Pcs
Bracket Assy Mounting
(Sub Frame) 4Pcs
ACRD 2.4L 03-07

MRP: 5400



HA1-T3101 Sub Frame-RH
MRP: 1200



HA1-T3102 Sub Frame-LH
MRP: 1200

HA1-T3100 - 2 Pcs
Bracket Assy Mounting
(Sub Frame-R/L) 2P
ACRD 2.4L 03-07

MRP: 2400



HA2-T4608 - 4 Pcs
Bracket Assy Mounting
(Strut-Fr)
ACRD 6TH, 7TH
8TH GEN (01-13)

MRP: 3600



HA2-T5608 - 4 Pcs
Bracket Assy Mounting
(Strut-Rr)
ACRD 6TH, 7TH
8TH GEN (01-13)

MRP: 1800

Rubber Parts



HA2-T1000
Bracket Assy Mounting
(Engine-FR)
ACRD 2.4L 08-12

MRP: 3900



HA2-T2000
Bracket Assy Mounting
(Engine-RR) 2.4L
ACRD 2.4L 08-12

MRP: 3100



HA2-T1001
Bracket Assy Mounting
(Engine-RH) Hydraulic
ACRD 2.4L 08-12

MRP: 2800



HA2-T1011
Bracket Assy Mounting
(Engine-RH) Hydraulic
ACRD 2.0L 08-12

MRP: 2900



HA2-T2100
Bracket Assy Mounting
(Trans-UPR)
ACRD 2.4L 08-12

MRP: 3300



HA2-T2100B
Bracket Assy Mounting
(Trans-Upr)W/Alum
ACRD 2.4L 08-12

MRP: 5200



HA2-T2101
Bracket Assy Mounting
(Trans-LWR)-2.4L
ACRD 2.4L 08-12

MRP: 1550



HA2-T2111
Bracket Assy Mounting
(Trans-LWR)-2.0L
ACRD 2.4L 08-12

MRP: 1550



HA2-T2010
Bracket Assy Mounting
(Engine-RR) 2.0L
ACRD 2.0L 08-12

MRP: 3100



HA2-A4603
Boot



HA2-T4602
Bump

HA2-A4601 - 2 Pcs
Protection Boot Kit -FR

ACRD 6TH, 7TH
8TH GEN (01-13)

MRP: 600



HA2-A5603
Boot



HA2-T5602
Rubber Bush

HA2-A5600 - 2 Pcs
Protection Boot Kit -RR

ACRD 6TH, 7TH
8TH GEN (01-13)

MRP: 800



HR3-T1000
Bracket Assy Mounting
(Engine-FR)
CRV-T3 06-11 MT, AT

MRP: 2800



HR3-T1001
Bracket Assy Mounting
(Engine-RH) Hydraulic
CRV-T3 06-11 MT, AT

MRP: 6000



HR3-T1002
Bracket Assy Mounting
(Trans-LH)
CRV-T3 06-11 MT

MRP: 6300



HR3-T1012
Bracket Assy Mounting
(Trans-LH)
CRV-T3 06-11 MT

MRP: 2800



HR3-T2100
Bracket Assy Mounting
(Torque-UPR)
CRV-T3 06-11 MT

MRP: 3000



HR3-T2101
Bracket Assy Mounting
(Torque-LWR)
CRV-T3 06-11 MT

MRP: 3000



HR3-T2110
Bracket Assy Mounting
(Torque-UPR)
CRV-T3 06-11 AT

MRP: 3000



HR3-T2111
Bracket Assy Mounting
(Torque-LWR)
CRV-T3 06-11 AT

MRP: 3000



HR3-T4608
Bracket Assy Mounting
(Strut-FR)
CRV-T3 06-11

MRP: 1500



HR3-A4101 Bush Fr-FR



HR3-A4105 Bush Rr-FR



HR3-A4301 Bush (Bar-FR)

HR3-A4100 Rubber Bushes -FR (4 Pcs)
MRP: 1800

HR3-A4000 - 6 Pcs

Rubber Bushes -FR

CRV-T3, T4 06-16

MRP: 2000

Rubber Parts



HR4-T1001
Bracket Assy Mounting
(Engine-RH) Hydraulic
CRV-T4 11-16 AT, MT

MRP: 5500



HR4-T1000
Bracket Assy Mounting
(Engine-FR)
CRV-T4 11-16 AT, MT

MRP: 3300



HR4-T1021
Bracket Assy Mounting
(Engine-RH) Hydraulic
CRV-T4 11-16 2.0L

MRP: 5500



HR4-T1012
Bracket Assy Mounting
(Trans-LH)
CRV-T4 11-16 AT

MRP: 3300



HR4-T2110
Bracket Assy Mounting
(Torque-UPR)
CRV-T4 11-16 AT

MRP: 3000



HR4-T2111
Bracket Assy Mounting
(TorqueLWR)
CRV-T4 11-16 AT

MRP: 3000

HR3-A4601 Protection Boot Kit -FR RH/LH (2 Pcs)

MRP: 900



HR3-A4603 Boot



HR3-T4602 Bump



HR3-A4606 Bearing -FR

HR3-A4600 - 3 Pcs

Protection Boot Kit -
FR W/Brg
CRV-T3, T4 06-16

MRP: 1150



HR3-A5603 Boot



HR3-T5602 Bump

HR3-A5600 - 6 Pcs

Protection Boot Kit -RR
CRV-T3, T4 06-16

MRP: 700



HR2-T1000
Bracket Assy Mounting
(Engine-FR)
CRV-T2 02-06 MT

MRP: 2900



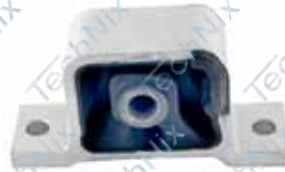
HR2-T2000
Bracket Assy Mounting
(Engine-RR)
CRV-T2 02-06

MRP: 2300



HR2-T1001
Bracket Assy Mounting
(Engine-RH) Hydraulic
CRV-T2 02-06

MRP: 2500



HR2-T1010
Bracket Assy Mounting
(Engine-FR)
CRV-T2 02-06 AT

MRP: 2300



HR2-T2100
Bracket Assy Mounting
(Transmission)
CRV-T2 02-06 MT

MRP: 2400



HR2-T2110
Bracket Assy Mounting
(Transmission)
CRV-T2 02-06 AT

MRP: 2400



HR2-T4608
Bracket Assy Mounting
(Strut-FR)
CRV-T2 02-06

MRP: 1500



HCT-T1000
Bracket Assy Mounting
(Engine-FR)
CTY TY-1,2 96-03

MRP: 750



HCT-T2000
Bracket Assy Mounting
(Trans-LH)
CTY TY-1,2 96-03

MRP: 1300



HCT-T1001
Bracket Assy Mounting
(Engine-RH)
CTY TY-1,2 96-03

MRP: 1300



HCT-A4608
Bracket Assy Mounting
(Strut-FR)
CTY TY-1,2 96-03

MRP: 750



HCT-A4000 - 14 Pcs
Rubber Bushes -FR
CTY TY-1 96-03

MRP: 1400



HCT-A4300M - 8 Pcs
Stab Kit -FR
CTY TY-1,2 96-03

MRP: 380



HCT-A5608
Mounting Strut -RR
CTY TY-1,2 96-03

MRP:



4 Pcs



8 Pcs

HCT-A5000
Rubber Bushes -RR
CTY TY-1,2 96-03

MRP:



HCT-A4600 - 4 Pcs
Protection Boot Kit-FR
W/ Brg
CTY TY-1,2 96-03

MRP:



HCT-A5600
Protection Boot Kit -RR
CTY TY-1,2 96-03

MRP:



HCT-A4606
Bearing Strut -FR
CTY TY-1,2 96-03

MRP: 450



TEO-T1001
Bracket Assy Mounting
(Engine-RH) Hydraulic
ETOS, LVA DSL

MRP: 4200



TEO-T1021
Bracket Assy Mounting
(Engine-RH)
ETOS, LVA DSL

MRP: 3000



TEO-T1002
Bracket Assy Mounting
(Trans-LH)
ETOS, LVA DSL

MRP: 3100



TEO-T2100
Bracket Assy Mounting
(Torque Rod RR)
ETOS, LVA DSL

MRP: 1500



TEO-T1011
Bracket Assy Mounting
(Engine-RH) Hydraulic
ETOS, LVA PTL

MRP: 3200



TEO-T1012
Bracket Assy Mounting
(Trans-LH)
ETOS, LVA PTL

MRP: 3100



TEO-T2110
Bracket Assy Mounting
(Torque Rod RR)
ETOS, LVA PTL

MRP: 1500



TEO-A4400 - 2 Pcs

Stab Kit-FR

ETOS, LVA

MRP: 380

TEO-A4608M
Mounting **MRP: 480**



TEO-A4608R
Retainer **MRP: 150**

TEO-A4608S - 2 Pcs
Bracket Assy Mounting
(Strut-FR)
ETOS, LVA

MRP: 550



TEO-A4602
Bump



TEO-A4606
Bearing-FR

TEO-A4600 - 2 Pcs

Protection Boot Kit -
FR W/Brg
ETOS, LVA

MRP: 415



TEO-T5602
Rubber Bush

MRP: 550

TEO-A5600 - 5 Pcs
Protection Boot Kit -
RR
ETOS, LVA



TEO-A5201
Bush RR Axle Arm
ETOS, LVA

MRP: 775

Rubber Parts

TYT-CRL (03-08)
TYT-ALTS (08-13)

TechNix High Performance

TEO-A4100 Rubber Bushes -FR (4 Pcs)

MRP: 1200



TEO-A4101 Bush Fr-FR

TEO-A4105 Bush Fr-FR

TEO-A4000 - 6 Pcs

Rubber Bushes -FR

ETOS, LVA



TEO-A4301

Bush (Bar-FR) ID=19mm

MRP: 1400



TC1-T1000

Bracket Assy Mounting
(Engine-FR)
CRL

MRP: 1600



TC1-T2000

Bracket Assy Mounting
(Engine-RR)
CRL

MRP: 2200



TC1-T1001

Bracket Assy Mounting
(Engine-RH) Hydraulic
CRL

MRP: 2900



TC1-T1002

Bracket Assy Mounting
(Engine-LH)
CRL

MRP: 2300



TC1-T5201

Mounting (RR Axle Arm)
CRL, ALTS

MRP: 1200



TC1-T4608

Bracket Assy Mounting
(Strut-FR)
CRL

MRP: 1300

TC1-A4100 Rubber Bushes -FR (4 Pcs)

MRP: 1400



TC1-A4101 Bush Fr-FR

TC1-A4105 Bush Rr-FR



TC1-A4301
Bush (Bar-FR)

TC1-A4000 - 6 Pcs

Rubber Bushes -FR

CRL

MRP: 1500



TC1-A4601 - 2 Pcs

Protection Boot Kit -FR
CRL, ALTS

MRP: 725



TC1-A5600 - 2 Pcs

Protection Boot Kit -RR
CRL, ALTS

MRP: 625

Engine Mounting

TechNix High Performance



TC2-T1000
Bracket Assy Mounting
(Engine-FR)
ALTS PTL

MRP: 1900



TC2-T2000
Bracket Assy Mounting
(Engine-RR)
ALTS PTL

MRP: 2200



TC2-T1001
Bracket Assy Mounting
(Engine-RH) Hydraulic
ALTS PTL

MRP: 3400



TC2-T1002
Bracket Assy Mounting
(Engine-LH)
ALTS PTL

MRP: 2400



TC2-T1011
Bracket Assy Mounting
(Engine-RH) Hydraulic
ALTS AT

MRP: 3700



TC2-T1021
Bracket Assy Mounting
(Engine-RH) Hydraulic
ALTS DSL

MRP: 4000



TC2-T4608
Bracket Assy Mounting
(Strut-FR) 14mm
ALTS

MRP: 1400



TC1-T5201
Mounting (RR Axle Arm)
CRL, ALTS

MRP: 1200

TC1-A4100 Rubber Bushes -FR (4 Pcs)
MRP: 1400



TC1-A4101 Bush Fr-FR

TC1-A4105 Bush Rr-FR



TC2-A4301
Bush (Bar-FR) ID=19mm

TC2-A4000 - 6 Pcs
Rubber Bushes -FR

ALTS

MRP: 1500



TC3-A4601
Protection Boot Kit -
FR
CRL, ALTS 14-17

MRP: 850



TYR-T1001
Bracket Assy Mounting
(Engine -RH)
YRIS 2018-22

MRP: 4500



TY1-T1000
Bracket Assy Mounting
(Engine -FR)
AVC40

MRP: 3700



TY1-T1001
Bracket Assy Mounting
(Engine -RH) Hydraulic
AVC40

MRP: 3700



TY1-T1002
Bracket Assy Mounting
(Engine -LH) Hydraulic
AVC40

MRP: 3700



TY1-T2100
Bracket Assy Mounting
(Torque Rod RR)
AVC40

MRP: 2100



TY1-T2110
Bracket Assy Mounting
(Torque Rod RR)
AVC30

MRP: 2100



TY2-T2100
Bracket Assy Mounting
(Torque Rod RR)
CMRY 2012-18

MRP: 2100



TY1-T4608
Bracket Assy Mounting
(Strut-FR)
AVC 30, 40

MRP: 1900



TY1-T5608L



TY1-T5608R

TY1-T5608 (R+L)
Bracket Assy Mounting
(Strut-Rr)
AVC 30, 40
MRP: 4200



TY1-A4601 - 2 Pcs
Protection Boot Kit -FR
AVC40

MRP: 800



TY1-A5600 - 2 Pcs
Protection Boot Kit -RR
AVC40

MRP: 850

Engine Mounting



TIV-T1000
Bracket Assy Mounting
(Engine-FR)
INOV, FORT-TY1 (2009-15)
MRP: 1000



TIV-T1020
Bracket Assy Mounting
(Engine-FR)
INOV CRYST
FORT-TY2 (2016-)
MRP: 1800



TIV-T2000
Bracket Assy Mounting
(Engine-RR)
INOV TY1
MRP: 1100



TFO-T2000
Bracket Assy Mounting
(Engine-RR)
FORT-TY1, INOV CRYST
MRP: 2200



TIV-T2020
Bracket Assy Mounting
(Engine-RR)
INOV CRYST
MRP: 2600



TIV-T3600
Prop Shaft Brg
INOV, FORT-TY1
(2009-15)
MRP: 1800



TIV-A4608
Mounting (Strut-FR)
INOV, CRYST
MRP: 775



TIV-A4601
Protection Boot
Kit -FR
INOV, CRYST
MRP: 625



TIV-T3100
Bracket Assy.
Mounting (Cabin)
INOV, FORTN
MRP: 600



TIV-A6010S
Strng Boot
INOV, CRYST
MRP: 400

TIV-A4100 Rubber Bushes -FR (8 Pcs)
MRP:3500



TIV-A4001
Bush Upr -FR

TIV-A4101
Bush Upr -FR

TIV-A4105
Bush Fr Lwr -FR

TIV-A4300 Bushes (Bar-FR) 6 Pcs
MRP:380



TIV-A4301
Bush (Bar-FR) ID=30mm

TIV-A4401

TIV-A4000 - 14 Pcs
Rubber Bushes -FR
INOV, CRYST

MRP:3700

Rubber Parts



TIV-A5000 - 21 Pcs

Rubber Bushes-RR

INOV, CRYST, FORTN

MRP: 3500



TIV-A5100 - 8 Pcs

Rubber Bushes-RR

INOV, CRYST, FORTN

MRP: 3200



TFO-T4608

Bracket Assy Mounting
(Strut-FR)

FORTN

MRP: 1200



TFO-A4601

Protection Boot Kit -FR

FORTN

MRP: 575



TFO-A4000

Rubber Bushes -FR

FORTN TY1 (2009-15)

MRP: 4200



TFO-A4010

Rubber Bushes -FR

FORTN TY2 (2016-)

MRP: 4400



MTO-T1000

Bracket Assy. Mounting
(Engine -FR)

OUTLNR

MRP: 2000



MTO-T2000

Bracket Assy. Mounting
(Trans -RR)

OUTLNR

MRP: 2600



MTO-T1001

Bracket Assy. Mounting
(Engine -RH)

OUTLNR

MRP: 3000



MTO-T1002

Bracket Assy. Mounting
(Engine -LH)

OUTLNR

MRP: 3000



MTO-T4608

Bracket Assy. Mounting
(Strut -FR)

OUTLNR

MRP: 1650



MTO-A4301

Bush (Bar -FR)

OUTLNR

MRP: 250



MTL-T1000
Bracket Assy Mounting
(Engine-FR)
LANCR

MRP: 1000



MTL-T2000
Bracket Assy Mounting
(Engine-RR)
LANCR

MRP: 1000



MTL-T1001
Bracket Assy Mounting
(Engine-RH)
LANCR PTL

MRP: 1800



MTL-T1002
Bracket Assy Mounting
(Trans-LH)
LANCR

MRP: 1800



MTL-T1011
Bracket Assy Mounting
(Engine-RH)
LANCR DSL

MRP: 1800



MTL-T2010
Bracket Assy Mounting
(Engine-RR)
LANCR DSL

MRP: 1000

MTL-A4100 Rubber Bushes -FR (4Pcs)
MRP: 1400



MTL-A4101 Bush Fr -FR **MTL-A4105** Bush Rr -FR

MTL-A4300M Rubber Bushes -W/Link (4Pcs)
MRP: 540



MTL-A4000M - 14 Pcs
Bushes -FR
LANCR

MRP: 1600

MTL-A5000 - 24 Pcs

Rubber Bushes -RR

LANCR

MRP: 3200

5301

5400

MTL-A5300M- 10 Pcs

Bushes (Bar-RR)

LANCR

MRP: 480

MTL-A4600 - 4 Pcs

Protection Boot Kit -
FR W/Brg
LANCR

MRP: 420

MTL-A5600 - 5 Pcs

Protection Boot Kit -RR
LANCR

MRP: 575

Rubber Parts



MTL-A4608
Mounting (Strut-FR)
LANCR
MRP: 950



MTC-T4608
Bracket Assy Mounting (Strut-FR)
MITS CDIA 09-13
MRP: 1900



MTC-T1000
Bracket Assy Mounting (Engine-FR)
MITS CDIA 09-13
MRP: 1500



MTC-T2000
Bracket Assy Mounting (Trans-RR)
MITS CDIA 09-13
MRP: 3000



MTC-T1001
Bracket Assy Mounting (Engine-RH)
MITS CDIA 09-13
MRP: 4500



MTPS-T5602
Bump Stopper -RR
MITS PJRO
MRP: 800



MTP-T2000
Bracket Assy Mounting (Engine -FR)
MITS PJRO
MRP: 4000



MTPS-T2100
Bracket Assy Mounting (Trans -RR)
MITS PJRO
MRP: 800



IDM-T1001
Bracket Assy Mounting (Engine-RH)
ISZ- DMX, MU7
MRP: 4000



IDM-T1002
Bracket Assy Mounting (Engine-LH)
ISZ- DMX, MU7
MRP: 4000



IDM-T2000
Bracket Assy Mounting (Trans-RR)
ISZ- DMX, MU7
MRP: 3500



IDM-A4301
Bush (Bar-FR)
ISZ- DMX, MU7
MRP: 300

HYN-CRET (15-)
KIA-SELTS (19-)

TechNix High Performance



YCR-T1001
Bracket Assy Mounting
(Engine-RH) Hydraulic
YN-CRET

MRP: 2900



YCR-T1002
Bracket Assy Mounting
(Transaxle-LH)
YN-CRET MT

MRP: 3000



YCR-T1012
Bracket Assy Mounting
(Transaxle-LH)
YN-CRET - AT

MRP: 3100



YCR-T2100
Bracket Assy Mounting
(Torque Rod RR)
YN-CRET PTL

MRP: 2500



Y20-T2100
Bracket Assy Mounting
(Roll Rod-RR)
CRTA, VRN-FL, ELNTR FL, 20,
20EL, 20ACT DSL,
Replaces YV2-T2100

MRP: 2300



YCR-A5201
Bush RR Axle Arm
YN-CRET

MRP: 1000



YCR-T4608
Mounting (Strut-FR)
W/BRG
YN-CRET

MRP: 1100



YCR-T5608
Bracket Assy Mounting
(Strut-RR)
YN-CRET

MRP: 700



YCR-A4601 - 4 Pcs
Protection Boot Kit -FR
YN-CRET

MRP: 600



YCR-A5600 - 4 Pcs
Protection Boot Kit -RR
YN-CRET

MRP: 660

YCR-A4100 Rubber Bushes -FR (4 Pcs)

MRP: 1450



YCR-A4101 Bush Fr-FR



YCR-A4105 Bush Rr-FR



YCR-A4301 Bush (Bar-FR)

YCR-A4000 - 6 Pcs

Rubber Bushes -FR

YN-CRET

MRP: 1750

Rubber Parts

TechNix High Performance



YSF-T1000
Bracket Assy Mounting
(Engine-FR)
YN-STFE 09-13

MRP: 3300



YSF-T2000
Bracket Assy Mounting
(Engine-RR)
YN-STFE 2WD 09-13

MRP: 5300



YSF-T1001
Bracket Assy Mounting
(Engine-RH) Hydraulic
YN-STFE 09-13

MRP: 5300



YSF-T2010
Bracket Assy Mounting
(Engine-RR)
YN-STFE 4WD 09-13

MRP: 4800



YSF-T2100
Bracket Assy Mounting
(Transaxle-LH)
YN-STFE 09-13

MRP: 5000



YSF-T4608
Bracket Assy Mounting
(Strut-FR)
YN-STFE 09-13

MRP: 1800



YSF2-T1001
Bracket Assy Mounting
(Engine-RH) Hydraulic
YN-STFE 13-18

MRP: 4200



YSF2-T2100
Bracket Assy Mounting
(Torque-RR)
YN-STFE 13-18

MRP: 4200



YSF2-T1002
Bracket Assy Mounting
(Engine-LH)
YN-STFE 13-18

MRP: 4200



YSF2-T4608
Bracket Assy Mounting
(Strut-FR)
YN-STFE 13-18

MRP: 1800

YSF-A4100 Rubber Bushes -FR (4 Pcs)

MRP: 1950



YSF-A4101 Bush Fr -FR



YSF-A4105 Bush Rr -FR



YSF-A4301 Bush (Bar-FR)

YSF-A4000 - 6 Pcs

Rubber Bushes -FR

YN-STFE 09-13

MRP: 2250

YSF2-A4100 Rubber Bushes -FR (4 Pcs)

MRP: 1850



YSF2-A4101 Bush Fr -FR



YSF2-A4105 Bush Rr -FR



YSF2-A4301 Bush (Bar-FR)

YSF2-A4000 - 6 Pcs

Rubber Bushes -FR

YN-STFE 13-18

MRP:



YTS-T1001

Bracket Assy Mounting
(Engine-RH) Hydraulic
YN-TCSN

MRP: 5000



YTS-T4608

Bracket Assy Mounting
(Strut -FR)
YN-TCSN

MRP: 1700



YE3-T1001

Bracket Assy Mounting
(Engine-RH) Hydraulic
YN-ELNTR 2016-

MRP: 4500



YE3-T2100

Bracket Assy Mounting
(Trans-RR)
YN-ELNTR 2016-

MRP: 3000



YV3-T1002

Bracket Assy Mounting
(Engine-LH)
YN-ELNTR 2016- MT

MRP: 3100



YV3-T1012

Bracket Assy Mounting
(Transaxle -LH)
YN-ELNTR 2016- AT

MRP: 3100



YE3-T4608

Bracket Assy Mounting
(Strut -FR)
YN-ELNTR 2016-

MRP: 2200



YV1-T1000
Bracket Assy Mounting
(Engine-FR)
YN-VRN 07-11

MRP: 1950



YV1-T2000
Bracket Assy Mounting
(Engine-RR)
YN-VRN 07-11

MRP: 2050



YV1-T1001
Bracket Assy Mounting
(Engine-RH) Hydraulic
YN-VRN 07-11 DSL

MRP: 2950



YV1-T1002
Bracket Assy Mounting
(Transaxle-LH)
YN-VRN 07-11 DSL

MRP: 3750



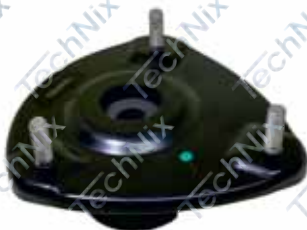
YV1-T1011
Bracket Assy Mounting
(Engine-RH) Hydraulic
YN-VRN 07-11 PTL

MRP: 3400



YV1-T1012
Bracket Assy Mounting
(Transaxle-LH)
YN-VRN 07-11 PTL

MRP: 3200



YV1-T4608
Bracket Assy Mounting
(Strut-FR)
YN-VRN 07-11

MRP: 1150



YV1-T5608
Bracket Assy Mounting
(Strut-RR)
YN-VRN 07-11

MRP: 900



YV1-A5201
Bush RR Axle Arm
YN-VRN 07-11

MRP: 550

YV1-A4100 Rubber Bushes -FR (4 Pcs)

MRP: 1200



YV1-A4101 Bush Fr -FR



YV1-A4105 Bush Rr -FR



YV1-A4301

YV1-A4000 - 6 Pcs

Rubber Bushes -FR

YN-VRN 07-11

MRP: 1300

Engine Mounting

YV1-A4601 Protection Boot Kit -FR W/o Brg (5 Pcs)



MRP: 730

YV1-T4602 Bump Stopper -FR



YV1-A4606 Bearing



YV1-A4600 - 6 Pcs

Protection Boot Kit -
FR W/Brg
YN-VRN 07-11

MRP: 1200

YV1-A5600 - 4 Pcs

Protection Boot Kit -RR

YN-VRN 07-11

MRP: 730



YV2-T1001

Bracket Assy Mounting
(Engine-RH) Hydraulic

YN-VRN-FL 11-17

YN-ELNTR 12-17

Replaces Y2E- T1001

MRP: 2650



YV2-T2100

Bracket Assy Mounting
(Roll Rod-RR)

CRTA, VRN-FL, ELNTR FL, 20,

20EL, 20ACT DSL

Replaces Y20- T2100

MRP: 2300



Y2E-T2100

Bracket Assy Mounting
Torque Rod RR

YN-20, 20EL, 20 ACT, VRN FL,

VRN 16-, ELNTR FL, AUR,

SNT 18-, i10 GR PTL

MRP: 2300



YV2-T1002

Bracket Assy Mounting
(Transaxle-LH)

YN-VRN-FL 11-17 MT

YN-ELNTR 12-17 MT

MRP: 2850



YV2-T1012

Bracket Assy Mounting
(Transaxle-LH)

YN-VRN-FL 11-17 AT

YN-ELNTR 12-17 AT

MRP: 2850



YV2-A4100 Rubber Bushes -FR (4 Pcs)

MRP: 1200



YV1-A4101 Bush Fr -FR

YV2-A4105 Bush Rr -FR

YV2-A4000 - 6 Pcs

Rubber Bushes -FR

VRN-FL 11-17

ELNTR FL 12-15

MRP: 1300



YV2-A4301

Bush (Bar-FR) ID=19mm

YV2-A4608M

YV2-A4608S - 2 Pcs

Mounting (Strut-FR)
W/Retainer

YN-VRN-FL 12-17

MRP: 525

YV2-A5201

Bush RR Axle Arm

YN-VRN-FL 12-17

MRP: 750



YV2-A4608R





YV2-A4603 Boot



YV2-T4602 Bump Stopper -FR



YV2-A4606 Bearing

YV2-A4600 - 5 Pcs

Protection Boot Kit -FR
W/Brg

VRN-FL 11-17
ELNTR FL 12-15

MRP: 550



YV2-A5603 Boot



YV2-T5602 Bump Stopper -RR

YV2-A5600 - 4 Pcs

Protection Boot Kit -RR

YN-VRN-FL 11-17

MRP: 775



YE2-A4100
Rubber Bushes -FR

YN-ELNT 10-16

MRP: 1200



YE2-T4608

Bracket Assy Mounting
(Strut-FR)

YN-ELNT 10-16
Replaces YCR-T4608

MRP: 1500



YV2-A4601 - 4 Pcs

Protection Boot Kit -FR

YN-ELNT 10-16
Replaces YCR-A4601

MRP: 600



YV3-T1001
Bracket Assy Mounting
(Engine-RH)
VERNA 17-22

MRP: 3100



YV3-T2100

Bracket Assy Mounting
(Trans-RR)

VERNA - 17-22
VENU
Replaces Y2E-T2100

MRP: 2300



YV3-T1002
Bracket Assy Mounting
(Trans-LH)
VERNA MT 17-22
VENU

MRP: 3100



YV3-T1012

Bracket Assy Mounting
(Trans-LH)

VERNA AT 17-22
VENU

MRP: 3100

Engine Mounting

YV3-A4100 Rubber Bushes -FR (4 Pcs)

MRP: 1450



YV3-A4101 Bush Fr -FR

YV3-A4105 Bush Rr -FR



YV3-A4301 Bush (Bar-FR)

YV3-A4000 - 6 Pcs

Rubber Bushes -FR

VERNA 17-22

MRP: 1700

YV3-A4600 - 5 Pcs

Protection Boot Kit - FR

VERNA 17-22

MRP: 675



YV3-A5600

Protection Boot Kit -RR

VERNA 17-22

MRP: 775

YV3-A4608M



YV3-A4608R

YV3-A4608S

Bracket Assy Mounting (Strut-FR)

VERNA 17-22

VENU

MRP: 560



YVU-A5201

Bush RR Axle Arm

VENU

MRP: 750



YVU-T1001

Bracket Assy Mounting (Engine-RH)

VENU

MRP: 2900

YVU-A4100 Rubber Bushes -FR (4 Pcs)

MRP: 1200



YV1-A4101 Bush Fr -FR

YV2-A4105 Bush Rr -FR



YV2-A4301 Bush (Bar-FR) ID=19mm

YVU-A4000 - 6 Pcs

Rubber Bushes -FR

VENU

MRP: 1300

YVU-A4600 - 5 Pcs

Protection Boot Kit - FR

VENU

MRP: 675



YVU-A5600

Protection Boot Kit -RR

VENU

MRP: 775



YSE-T1000
Bracket Assy Mounting
(Engine-FR)
YN-SON EMB

MRP: 3200



YSE-T2000
Bracket Assy Mounting
(Engine-RR)
YN-SON EMB

MRP: 3900



YSE-T1001
Bracket Assy Mounting
(Engine-RH) Hydraulic
YN-SON EMB

MRP: 5700



YSE-T1002
Bracket Assy Mounting
(Transaxle-LH)
YN-SON EMB

MRP: 4000



YSE-T4608
Bracket Assy Mounting
(Strut-FR)
YN-SON EMB

MRP: 1900



YE1-T1000
Bracket Assy Mounting
(Engine-FR)
YN-ELNT 00-06

MRP: 1700



YE1-T2000
Bracket Assy Mounting
(Trans-RR)
YN-ELNT 00-06

MRP: 1700



YE1-T1001
Bracket Assy Mounting
(Engine-RH)
YN-ELNT 00-06

MRP: 3000



YE1-T2100
Bracket Assy Mounting
(Transaxle)
YN-ELNT 00-06

MRP: 2500



YE1-T4608
Bracket Assy Mounting
(Strut-FR)
YN-ELNT 00-06

MRP: 1600



YEO-T1001
Bracket Assy Mounting
(Engine-RH)
YN-YEONE

MRP: 1900



YEO-T1002
Bracket Assy Mounting
(Transaxle-LH)
YN-YEONE

MRP: 2800



YEO-T2100
Bracket Assy Mounting
(Trans-RR)
YN-YEONE

MRP: 1400



YEO-T2110
Bracket Assy Mounting
(Torque RR)
YN-YEONE

MRP: 1500



YEO-A4608M
MRP: 440

YEO-A4608S - 2 Pcs
Mounting (Strut-FR)
W/Retainer
YN-YEONE

MRP: 525



YEO-A4608M

YEO-A4618S - 2 Pcs
Mounting (Round Hole)
(Strut -FR) W/Retainer
YN-YEONE

MRP: 525



YEO-A4600 - 4 Pcs

Protection Boot Kit -
FR W/Brg
YN-YEONE

Y10-A4606

MRP: 510



YEO-T5809
Bump Stopper -RR
YN-YEONE

MRP: 330



YEO-A4301 Bush (Bar-FR)

YEO-A4300 Bushes (Bar-FR) (6 Pcs)

MRP: 250



YEO-A4201 Bush (Bar-FR) Conical



YV1-A4101 Bush Fr -FR

YEO-A4000 - 8 Pcs

Rubber Bushes -FR

YN-YEONE

MRP: 630



Y10-T1000
Bracket Assy Mounting
(Engine-FR)
YN-10

MRP: 1600



Y10-T2000
Bracket Assy Mounting
(Transaxle-LH)
YN-10

MRP: 1700



Y10-T2100
Bracket Assy Mounting
(Torque Rod-RR)
YN-10 1.1L

MRP: 1400



Y10-T2110
Bracket Assy Mounting
(Torque Rod)
YN-10 1.2L

MRP: 1400



Y10-A5201
Bush (RR Axle Arm)
YN-10

MRP: 725

Y10-A4608M

MRP: 450



Y10-A4608R
MRP: 120

Y10-A4608S - 2 Pcs

Mounting (Strut-FR)
W/Retainer
YN-10

MRP: 540



Y10-A4603 Boot



Y10-T4602 Bump Stopper -FR



Y10-A4606 Bearing

Y10-A4600 - 4 Pcs

Protection Boot Kit -
FR W/Brg
YN-10

MRP: 525



Y10-A5603 Boot



Y10-T5602 Bump Stopper -RR



Y10-A5600 - 4 Pcs

Protection Boot Kit -RR

YN-10

MRP: 630

Y10-A4100 Rubber Bushes -FR (4 Pcs)

MRP: 1050



Y10-A4101 Bush Fr -FR



Y10-A4105 Bush Rr -FR



Y10-A4301 Bush (Bar-FR)

Y10-A4000 - 6 Pcs

Bracket Assy Mounting
(Engine-FR)
YN-10

MRP: 1150

Engine Mounting



Y1G-T1001
Bracket Assy Mounting
(Engine-RH) Hydraulic
YN-10GR, XNT-PTL

MRP: 2650



Y1G-T1002
Bracket Assy Mounting
(Transaxle-LH)
YN-10GR, XNT-PTL

MRP: 3300



Y1G-T2100
Bracket Assy Mounting
(Torque Rod-RR)
YN-10GR, XNT-PTL

MRP: 2300



Y1G-T2110
Bracket Assy Mounting
(Torque Rod-RR)
YN-10GR, XNT-DSL

MRP: 2300



Y1G-T1011
Bracket Assy Mounting
(Engine-RH) Hydraulic
YN-10GR, XNT-DSL

MRP: 2650



Y1G-T1012
Bracket Assy Mounting
(Transaxle-LH)
YN-10GR, XNT-DSL

MRP: 3200

Y1G-A4608M



Y1G-A4608S - 2 Pcs
Mounting (Strut-FR)
W/Retainer
YN-10GR, XNT

Y1G-A4608R

MRP: 525



Y1G-A5201
Bush RR Axle Arm
YN-10GR, XNT

MRP: 750

Y1G-T4602



Y1G-A4600 - 5 Pcs
Protection Boot Kit -FR
YN-10GR, XNT

Y10-A4606

MRP: 550

Y1G-T5602



Y1G-A5600 - 4 Pcs
Protection Boot Kit -RR
YN-10GR, XNT

MRP: 700

Y1G-A4100 Rubber Bushes -FR (4 Pcs)



MRP: 1200

YV1-A4101 Bush Fr -FR

YV2-A4105 Bush Rr -FR

Y1G-A4000 - 6 Pcs



Rubber Bushes - FR
YN-10GR, XNT
Replaces YV2-A4000

YV2-A4301 Bush (Bar-FR)

MRP: 1300

Rubber Parts



Y20-T1021
Bracket Assy Mounting
(Engine-RH) Hydraulic
YN-20

MRP: 3000



Y20-T2000
Bracket Assy Mounting
(Transaxle-LH)
YN-20

MRP: 3100



Y20-T2100
Bracket Assy Mounting
(Roll Rod-RR)
YN-20 DSL

MRP: 2300



Y2E-T2100
Bracket Assy Mounting
Torque Rod RR
YN-20, 20EL, 20 ACT, VRN FL,
VRN 16-, ELNTR FL, AUR,
SNT 18-, i10 GR PTL

MRP: 2300



Y20-A4608M
MRP: 450

Y20-A4608S - 2 Pcs
Mounting (Strut-FR)
W/Retainer
YN-20

Y20-A4608R
MRP: 120

MRP: 540



Y20-A5201
Bush RR Axle Arm
YN-20

MRP: 750

YV1-A4100 Rubber Bushes -FR (4 Pcs)

MRP: 1200



YV1-A4101 Bush Fr -FR



YV1-A4105 Bush Rr -FR



Y20-A4301 Bush (Bar-FR)

Y20-A4000 - 6 Pcs
Rubber Bushes -FR
YN-20, VRN T1

MRP: 1300



Y20-A4603 Boot



Y20-T4602 Bump Stopper -FR



Y10-A4606 Bearing

Y20-A4600 - 5 Pcs
Protection Boot Kit -FR
YN-20

MRP: 560



Y20-A5600 - 3 Pcs
Protection Boot Kit -RR
YN-20

MRP: 550



KSN-A5201
Bush RR Axle Arm
YN-20 3RD GEN,
KI-SNET CARNIS

MRP: 1000

Y20-A5603 **Y20-T5602**
Bump Stopper -RR

Engine Mounting



Y2E-T1001
Bracket Assy Mounting
(Engine-RH) Hydraulic
YN-20EL, ACT

MRP: 2650



Y2E-T1002
Bracket Assy Mounting
(Transaxle-LH)
YN-20EL, ACT

MRP: 3000



Y2E-T1012
Bracket Assy Mounting
(Transaxle-LH)-TURBO
YN-20EL, ACT TUR

MRP: 3100



Y2E-T2100
Bracket Assy Mounting
Torque Rod RR
YN-20, 20EL, 20 ACT, VRN FL,
VRN 16-, ELNTR FL, AUR,
SNT 18-, i10 GR PTL

MRP: 2300



Y20-T2100
Bracket Assy Mounting
(Roll Rod-RR)
CRTA, VRN-FL, ELNTR FL, 20,
20EL, 20ACT DSL
Replaces YV2-T2100

MRP: 2300



Y2E-A5600 - 4 Pcs
Protection Boot Kit -RR
YN-20EL, ACT

MRP: 800



Y2E-A4600 - 5 Pcs
Protection Boot Kit -FR
W/Brg
YN-20EL, ACT

MRP: 600

Y2E-T4602 Bump



Y10-A4606 Bearing



Y2E-A4100 Rubber Bushes -FR (4 Pcs)

MRP: 1200



YV1-A4101 Bush Fr -FR



YV2-A4105 Bush Rr -FR



YV2-A4301 Bush (Bar-FR)

Y2E-A4000 - 6 Pcs

Rubber Bushes - FR

i20 ELITE, ACTIVE
Replaces YV2-A4000

MRP: 1300



YSN-A4600 - 5 Pcs

Protection Boot Kit -FR

YN-SNT, XNG

YSN-T4602
Bump Stopper -FR

MRP: 525



YSN-A4608
Mounting (Strut-FR)

YN-SNT, XNG

MRP: 725

Rubber Parts

HYN-SNTRO (98-05)
HYN-XNG (05-14)

TechNix High Performance



YSN-T1000
Bracket Assy Mounting
(Engine-FR)

YN-SNT

MRP: 800



YSN-T1010
Bracket Assy Mounting
(Engine-FR)

YN-XNG

MRP: 850



YSN-T2000
Bracket Assy Mounting
(Engine-RR)

YN-SNT

MRP: 1500



YSN-T2010
Bracket Assy Mounting
(Engine-RR)

YN-XNG

MRP: 1500



YSN-T2100
Bracket Assy Mounting
(Transaxle-RR)

YN-SNT

MRP: 800



YSN-T2110
Bracket Assy Mounting
(Transaxle-RR)

YN-XNG

MRP: 800



YSN-A5201
Bush RR Axle Arm

YN-SNT, XNG

MRP: 300



YSN-T2409
Bracket Assy Mounting
(Gear Shifter -RR)

YN-SNT, XNG

MRP: 175

SNTRO BELLOWS



YSN-A6000S
Strng Boot Set Synth



YSN-A6010S
PWR Strng Boot Synth



YSN-A6401
Axle Boot WS



YSN-A6405
Axle Boot DS

YSN-A4100 Rubber Bushes -FR (4 Pcs)
MRP: 900



YSN-A4101
Bush Fr -FR

YSN-A4105
Bush Rr -FR

YSN-A4300 Rubber Bushes -FR (4 Pcs)
MRP: 300



YSN-A4301
Bush (Bar-FR)

YSN-A4400
Bar -FR

YSN-A4000 - 8 Pcs

Rubber Bushes -FR
W/Link
YN-SNT,XNG

MRP: 1100

Engine Mounting

TechNix High Performance



YAC-T1000
Bracket Assy Mounting
(Engine-FR)
YN-ACNT

MRP: 850



YAC-T1010
Bracket Assy Mounting
(Engine-FR)
YN-ACNT CRD

MRP: 950



YAC-T2000
Bracket Assy Mounting
(Engine-RR)
YN-ACNT

MRP: 850



YAC-T2010
Bracket Assy Mounting
(Engine-RR)
YN-ACNT CRD

MRP: 950



YAC-T2100
Bracket Assy Mounting
(Trans-RR)
YN-ACNT

MRP: 2100



YAC-T2110
Bracket Assy Mounting
(Trans-RR)
YN-ACNT CRD

MRP: 1900



YAC-T1001
Bracket Assy Mounting
(Engine-RH)
YN-ACNT

MRP: 2900



YAC-A4608
Mounting (Strut-FR)
YN-ACNT

MRP: 960



YAC-A4601 - 4 Pcs
Protection Boot Kit -FR
YN-ACNT

MRP: 500



YAC-A5000 - 18 Pcs
Rubber Bushes -RR
YN-ACNT

MRP: 1600



YAC-A5600 - 5 Pcs
Protection Boot Kit
(Strut -RR)
YN-ACNT

MRP: 700



5608B
Bush



YAC-A5608
Mounting Strut -RR
W/Plate
YN-ACNT

MRP: 750

Rubber Parts

YAC-A4100 Rubber Bushes -FR (4 Pcs)

MRP: 950



YAC-A4101 Bush Fr -FR



YAC-A4105 Bush Rr -FR



YAC-A4301 Bush (Bar-FR)

YAC-A4000 - 6 Pcs

Bracket Assy Mounting
(Engine-FR)
YN-ACENT

MRP: 1100



YGZ-T1001

Bracket Assy Mounting
(Engine-RH) Hydraulic
YN-GZ, GZ-PR PTL

MRP: 3700



YGZ-T1011

Bracket Assy Mounting
(Engine-RH)-Prime
YN-GZ-PR DSL

MRP: 4800



YGZ-T1002

Bracket Assy Mounting
(Transaxle)
YN-GZ, GZ-PR PTL

MRP: 4000



YGZ-T1012

Bracket Assy Mounting
(Transaxle)-Prime
YN-GZ-PR DSL

MRP: 5800



YGZ-T2100

Bracket Assy Mounting
(Torque Rod-RR)
YN-GZ, GZ-PR PTL

MRP: 2000



YGZ-T2110

Bracket Assy Mounting
(Torque Rod)-Prime
YN-GZ-PR DSL

MRP: 3000

Y10-A4100 Rubber Bushes -FR (4 Pcs)

MRP: 1050



Y10-A4101 Bush Fr -FR



Y10-A4105 Bush Rr -FR



YGZ-A4301 Bush (Bar-FR)

YGZ-A4000 - 6 Pcs

Rubber Bushes -FR

YN-GZ

MRP: 1150



YGZ-A4603 Boot
YGZ-T4602 Bump Stopper -FR

MRP: 500

YGZ-A4601 - 3 Pcs

Protection Boot Kit -FR

YN-GZ



YGZ-A5600 - 6 Pcs

Protection Boot Kit -RR

YN-GZ

MRP: 850

Engine Mounting



MS1-T1001
Bracket Assy Mounting
(Engine-RH)
SWIF 04-10

MRP: 1100



MS1-T1002
Bracket Assy Mounting
(Engine-LH)
SWIF 04-10

MRP: 900



MS1-T2000
Bracket Assy Mounting
(Trans-RR)
SWIF 04-10

MRP: 1300



MS1-A5201
Bush RR Axle Arm
SWIF 04-10

MRP: 650



MS1-A4608S
Mounting (Strut-FR)
W/Retainer
SWIF 04-10

MRP: 525



MS1-A4602
Bump Stopper-FR

MS1-A4606
Bearing

MS1-A4600
Protection Boot Kit -
FR W/Brg
SWIF 04-10

MRP: 400

MS1-A4608R
MRP: 125



MS1-A5603 Boot
MS1-T5602 Bump Stopper -RR

MS1-A5600 - 6 Pcs
Protection Boot Kit -
RR
SWIF 04-10, SX-4

MRP: 550



MS1-A4300 - 6 Pcs
Bushes (Bar-FR)
SWIF 04-10, SX-4

MRP: 160

MS1-A4100 Rubber Bushes -FR (4 Pcs)
MRP: 900



MS1-A4101 Bush Fr -FR

MS1-A4105 Bush Rr -FR



MS1-A4301 Bush (Bar-FR)

MS1-A4000 - 6 Pcs
Rubber Bushes -FR
SWIF 04-10, SX-4

MRP: 1000



MS1-A6000S
Strng Boot Set Synth
SWIF 04-10

MRP: 400 (SET)



MS2-T1001
Bracket Assy Mounting
(Engine-RH) Hyd W/Alu
SWIF, DZR
ERTG PTL 10-17
MRP: 2850



MS2-T1001A
Bracket Assy Mounting
(Engine-RH) Hyd W/o
Alu
SWIF, DZR
ERTG PTL 10-17
MRP: 2550



MS2-T1011
Bracket Assy Mounting
(Engine-RH) W/Alum
SWIF, DZR
ERTG PTL 10-17
MRP: 2700



MS2-T1011A
Bracket Assy Mounting
(Engine-RH) W/o
Alum
SWIF, DZR
ERTG PTL 10-17
MRP: 2400



MS2-T1021
Bracket Assy Mounting
(Engine-RH) Hydraulic
W/Alum
SWIF, DZR TY 2
DSL **MRP: 3900**



MS2-T1021A
Bracket Assy Mounting
(Engine-RH) Hydraulic
W/o Alum
SWIF, DZR TY 2
DSL **MRP: 3000**



MEG-T1021
Bracket Assy Mounting
(Engine-RH) Hydraulic
W/Alum
ERTG-T1 DSL
MRP: 4000



MEG-T1021A
Bracket Assy Mounting
(Engine-RH) Hydraulic
W/o Alum
ERTG-T1 DSL
MRP: 3100



MS2-T2000
Bracket Assy Mounting
(Engine-RR)
SWIF, DZR
ERTG 10-17
MRP: 1300



MEG-T1002
Bracket Assy Mounting
(Engine-LH)
ERTG-T1, SWFT, DZ-T2
DSL
MRP: 1600



MS2-A5201
Bush RR Axle Arm

SWIF, DZR, ERTG 10-17

MRP: 650

MEG-A4608M

MRP: 400



MEG-A4608S - 2 Pcs

Mounting (Strut-FR)

SWIF, DZR, ERTG 10-17

MRP: 525

MEG-A4608R
MRP: 125



MEG-A4603 Boot



MEG-T4602 Bump Stopper-FR



MEG-A4606 Bearing

MEG-A4600 - 3 Pcs

Protection Boot Kit -FR

SWIF, DZR, ERTG 10-17

MRP: 500



MEG-T5602
Bump Stopper -RR



MEG-A5600 - 7 Pcs

Protection Boot Kit -RR

SWIF, DZR, ERTG 10-17

MRP: 650

MS2-A4100 Rubber Bushes -FR (4 Pcs)

MRP: 1000



MS1-A4101 Bush Fr -FR



MS2-A4105 Bush Rr -FR



MS2-A4301 Bush (Bar-FR)



MS2-A4000 - 6 Pcs

Rubber Bushes -FR

SWIF, DZR, ERTG 10-17

MRP: 1100

MS2-A4100 Rubber Bushes -FR (4 Pcs)

MRP: 1000



MS1-A4101 Bush Fr -FR



MS2-A4105 Bush Rr -FR



MCZ-A4301 Bush (Bar-FR)



MCZ-A4000 - 6 Pcs

Rubber Bushes -FR

CIZ

MRP: 1100

MCZ-A4600 - 4 Pcs

Protection Boot Kit -FR

CIZ

MRP: 675

MCZ-A4608S

Mounting (Strut-FR)

W/Retainer

CIZ

MRP: 525

Rubber Parts



MBR-T1001
Bracket Assy Mounting
(Engine-RH) Hydraulic
W/Alu
BRZA, S-CRS 1st GEN
MRP: 4800



MBR-T1001A
Bracket Assy Mounting
(Engine-RH) Hydraulic
W/o Alum
BRZA, S-CRS 1st GEN
MRP: 3800

MS2-A4100 Rubber Bushes -FR (4 Pcs) **MRP: 1000**



MS1-A4101 Bush Fr -FR

MS2-A4105 Bush Rr -FR

MBR-A4301 Bush (Bar-FR)

MBR-A4000 - 6 Pcs
Rubber Bushes -FR
BRZA, S-CRS 1st GEN

MRP: 1100



MBR-A4603 Boot



MBR-T4602 Bump



MEG-A4606 Bearing

MBR-A4600 - 5 Pcs
Protection Boot Kit -FR
BRZA, S-CRS 1st GEN

MRP: 650

MBR-A4608M



MBR-A4608R

MBR-A4608S - 2 Pcs
Mounting (Strut-FR)

BRZA, S-CRS 1st GEN

MRP: 525



4603
Boot



4602
Bump



4606
Bearing

MIG-A4600 - 3 Pcs
Protection Boot Kit -FR
BRZA, S-CRS 1st GEN

MRP: 400

MIG-A4608M



MIG-A4608R

MIG-A4608S - 2 Pcs
Mounting (Strut-FR)

IGNS

MRP: 425



MAS-A4608S
Mounting (Strut-FR)
W/Retainer

A-STR

MRP: 425



MAS-A4603 Boot



MAS-T4602 Bump Stopper-RR



MAS-A4606 Bearing

MAS-A4600 - 4 Pcs
Protection Boot Kit -FR
A-STR

MRP: 550

Engine Mounting



MS3-T1001
(Engine-RH)
Hydraulic
SWFT, DZR, ERTG (2018-)
BLNO 2ND GEN PTL
MRP: 2450



MS3-T1021
(Engine-RH)
Hydraulic
SWFT, DZR, ERTG (2018-)
BLNO 2ND GEN DSL
MRP: 2450



MS3-T1001A
(Engine-RH)
Hydraulic W/O Bkt
SWFT, DZR, ERTG (2018-)
BLNO 2ND GEN
MRP: 1850



MSB-A4600 - 5 Pcs
Protection Boot Kit -FR
BLNO 2ND GEN
MRP: 550



MS3-A4600 - 5 Pcs
Protection Boot Kit -FR
SWIF, DZR
ERTG 17-
MRP: 450



MS3-A4608S
Mounting (Strut-FR)
W/Retainer
SWIF, DZR
ERTG 17-
BLNO 2ND GEN
MRP: 425



MS3-A5201
Bush RR Axle Arm
SWIF, DZR
ERTG 17-
BLNO 2ND GEN
MRP: 650



MS3-A4101 Bush Fr -FR



MS3-A4105 Bush Rr -FR

MS3-A4100 Rubber Bushes -FR (4 Pcs)
MRP: 1150



MSB-A4301 Bush (Bar-FR)

MS3-A4000 - 6 Pcs

Rubber Bushes -FR

BLNO 2ND GEN
SWIF, DZR, ERTG 18-

MRP: 1250



MCE-T1001
Bracket Assembly Mounting
(Engine-RH) Hydraulic
W/Bkt
CELRIO
MRP: 2100



MCE-T1001A
Bracket Assembly Mounting
(Engine-RH) Hydraulic
W/O Bkt
CELRIO
MRP: 1650



MCE-A4602
Bump Stopper-FR

MCE-A4600 - 3 Pcs

Protection Boot Kit -FR
CELRIO

MRP: 420



MCE-A4608S
Mounting (Strut-FR)
W/Retainer
CELRIO

MRP: 425

Rubber Parts



MSX-T1000
Bracket Assy Mounting
(Engine-FR)
SX4

MRP: 900



MSX-T2000
Bracket Assy Mounting
(Engine-RR)
SX4 PTL

MRP: 930



MSX-T1001
Bracket Assy Mounting
(Engine-RH)
SX4 PTL

MRP: 1500



MSX-T1002
Bracket Assy Mounting
(Trans-LH)
SX4

MRP: 1200



MSX-T1021
Bracket Assy Mounting
(Engine-RH)
SX4 DSL

MRP: 1900



MSX-T2020
Bracket Assy Mounting
(Engine-RR)
SX4 DSL

MRP: 1450



MSX-A4603 Boot



MSX-T4602 Bump Stopper -FR



MSX-A4606 Bearing



MSX-A4600 - 4 Pcs
Protection Boot Kit -
FR W/Brg
SX4

MRP: 575



MS1-A5603
Boot



MS1-T5602
Bump Stopper -RR

MS1-A5600 - 6 Pcs
Protection Boot Kit -RR
SX4, SWFT TY-1

MRP: 550



MS1-A4101 Bush Fr -FR



MS1-A4105 Bush Rr -FR

MS1-A4100 Rubber Bushes -FR (4Pcs)

MRP: 900



MSX-A4301 Bush (Bar-FR)

MSX-A4000 - 6 Pcs
Rubber Bushes -FR
SX4

MRP: 1050

Engine Mounting



MAL-T1001
Bracket Assy Mounting
(Engine -RH)
ALT, WGN-R, ZN ESTL
1ST GEN
MRP: 850



MAL-T1002
Bracket Assy Mounting
(Engine -LH)
ALT, WGN-R, ZN ESTL
1ST GEN
MRP: 750



MAL-T2000
Bracket Assy Mounting
(Trans -RR)
ALT, WGN-R, ZN ESTL
1ST GEN
MRP: 650



MAK-T1001
Bracket Assy Mounting
(Engine -RH)
ALT K10 2ND GEN
MRP: 1150



MAK-T1002
Bracket Assy Mounting
(Engine -LH)
ALT K10 2ND GEN
MRP: 1250



MAK-T2000
Bracket Assy Mounting
(Trans -RR)
ALT K10 2ND GEN
MRP: 1250



MWR-T2000
Bracket Assy Mounting
(Trans -RR)
WGN-R 2ND GEN, STNGRY
MRP: 850



MWR-T1001
Bracket Assy Mounting
(Engine -RH)
WGN-R 2ND GEN, STNGRY
MRP: 1120



MWR-T1002
Bracket Assy Mounting
(Engine -LH)
WGN-R 2ND GEN, STNGRY
MRP: 1400



MAL-A4300
Front Bal Rod Kit
ALT, ALT K-T10, WGN-R,
ZN ESTL 1ST GEN
MRP: 190



MAL-A4600
Protection Boot Kit -FR
ALT, ALT K-T10, WGN-R,
ZN ESTL 1ST GEN
MRP: 400



MWR-A4600 - 4 Pcs
Protection Boot Kit -FR
WGN-R 2ND GEN, STNGRY
MRP: 480



MWR-T5602
Bump Stopper -RR
WGN-R 2ND GEN, STNGRY
MRP: 250

MAR 800 CAR MOUNTINGS



MC-1000
Front MRP:



MC-2000
Rear MRP:



MC-2100
Trans MRP:



MRP:
MC-4600
Protection Boot Kit - FR

MAR 800 CAR



MC-4300
Front Bal Rod Kit
MRP:



MC-5700
RR Spring Bush Kit 12 Pcs
MRP:



MC-6000S
Strng Boot Set Synth
MRP:



MC-6401
Axle Boot WS
MRP:



MC-6405
Axle Boot DS
MRP:

MAR EKO, VRS



MRP:
MEC-T1001
Front Eng Mtg MRP: 1100



MEC-T2000
Rear Eng Mtg MRP: 780



MRP: 210
MEC-A4300
Front Bal Rod Kit



MRP: 450
MEC-A4600
Protection Boot Kit - FR

MAR OMN VAN



MV-1000
Front Eng Mtg MRP:



MV-2000
Rear Eng Mtg MRP:



MRP:
MV-4600
Protection Boot Kit - FR

MAR OMN VAN



MV-4201
Stab End Bush - 4 Pcs Set
MRP:



MV-5701
Spring SB Bush
MRP:



MV-5701T
Spring SB Bush -PU
MRP:



MRP:
MV-5705
RR - Spring Shackle Bush
Engine Mounting



TATG-T1001
Bracket Assy Mounting
(Engine-RH)
TIAG, TGOR PTL
MRP: 2800



TATG-T1021
Bracket Assy Mounting
(Engine-RH) Hydraulic
TIAG, TGOR DSL
MRP: 3100



TATG-T2130
Bracket Assy Mounting
TIAG, TGOR
EV
MRP: 1900



TATG-T2100
Bracket Assy Mounting
(Torque Rod-RR)
TIAG, TGOR
MRP: 1350



TATG-T1002
Bracket Assy Mounting
(6 Hole)
(Trans-LH)
TIAG, TGOR
MRP: 1800



TATG-T1012
Bracket Assy Mounting
(3 Hole)
(Trans-LH)
TIAG, TGOR
MRP: 1800



TAZE-T1001
Bracket Assy Mounting
(Engine-RH)
ZST, BLT, IND VST, MNZA
DSL
MRP: 3600



TAZE-T1011
Bracket Assy Mounting
(Engine-RH)
ZST, BLT
PTL
MRP:



TAZE-T1002
Bracket Assy Mounting
(Engine-LH)
ZST, BLT, IND VST, MNZA
MRP: 3800



TAZE-T2100
Bracket Assy Mounting
(Torque-RR)
ZST, BLT
DSL
MRP: 1900



TAZE-T2110
Bracket Assy Mounting
(Torque-RR)
ZST, BLT PTL
NXXN EV
MRP: 1850



TANX-T2100
Bracket Assy Mounting
(Torque-RR)
NEXN
MRP: 1900



TANX-T1001
Bracket Assy Mounting
(Engine-RH)
NEXN PTL
MRP: 2250



TANX-T1021
Bracket Assy Mounting
(Engine-RH)
NEXN DSL
MRP: 3800



TANX-T1002
Bracket Assy Mounting
(Engine-LH)
NEXN
MRP: 3800



TANX-A5600
Protection Boot Kit -FR
ZST, BLT, NXN, TIAG, TGOR
ALTRZ
MRP:



TAAL-T1001
Bracket Assy Mounting
(Eng-RH)
ALTRZ, PNCH PTL
MRP: 3800



TAAL-T1021
Bracket Assy Mounting
(Eng-RH) Hydraulic
ALTRZ, PNCH DSL
MRP: 4200



TANX-A4608
Mounting (Strut-FR)
BLT, INDCA 13-, INDG 13-
NXN, TIAG, TGOR, ZST,
ALTRZ
MRP: 600



TANX-A5201
Bush RR Axle Arm
BLT, INDCA 13-, INDG 13-
NXN, TIAG, TGOR, ZST,
ALTRZ
MRP: 420



TATG-A5608
Bracket Assy Mounting
(Strut-RR)
TIAG, TGOR
MRP: 950



TANX-A4601 Protection Boot Kit -FR W/o Brg (3 Pcs)
MRP: 625



TANX-T4602 Bump Stopper -FR



TAZE-A4606 Bearing



TANX-A4600 - 4 Pcs
Protection Boot Kit -FR
W/Brg
BLT, INDCA 13-, INDG 13-
NXN, TIAG, TGOR, ZST,
ALTRZ

MRP: 1050



TANX-A4100 Rubber Bushes -FR (4 Pcs)
MRP: 1000



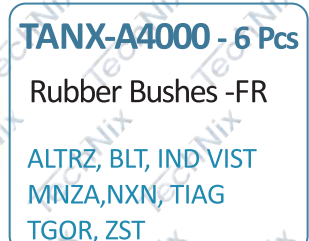
TANX-A4101 Bush Fr -FR



TANX-A4105 Bush Rr -FR



TANX-A4301 Bush (Bar-FR)



TANX-A4000 - 6 Pcs
Rubber Bushes -FR
ALTRZ, BLT, IND VIST
MNZA, NXN, TIAG
TGOR, ZST

MRP: 1200

Engine Mounting



TAHR-T1001
Bracket Assy Mounting
(Engine-RH) Hydraulic
HARER, SFARI NM

MRP: 4500



TAHR-T1002
Bracket Assy Mounting
(Engine-LH)
HARER, SFARI NM

MRP: 4500



TAHR-T2100
Bracket Assy Mounting
(Torque RR)
HARER, SFARI NM

MRP: 1700



TAHR-A4608
Bracket Assy Mounting
Strut-FR
HARER, SFARI NM

MRP: 1500



TAHR-A4601
Protection Boot Kit -FR
HARER, SFARI NM

MRP: 700



TAHR-A4606
Bearing (Strut-FR)
HARER, SFARI NM

MRP: 1200



TAHR-A4301
Rubber Bush Bar -FR
HARIR, SFARI NM

MRP: 270



TAIN-A4600

INDC
MRP: 700



TAIN-A4630

INDC VST
MRP: 675



TAIG-A4600

MRP: 650
INDG



TAIG-A5600
Protection Boot Kit -RR
INDG

MRP: 630



TANA-A4600
Protection Boot Kit -FR
W/Brg
NAN

MRP: 350

NAN ENG MOUNTING



TANA-T1000
Engine-RR MRP: 450



TANA-T2000
Engine-FR MRP: 450



TANA-T2100
Trans-RR MRP: 500
Rubber Parts



MM5-T1000
Bracket Assy Mounting
(Engine-FR)
XV500

MRP: 1500



MM5-T1001
Bracket Assy Mounting
(Engine-RH) Hydraulic
XV500

MRP: 2900



MM5-T2000
Bracket Assy Mounting
(Engine-RR)
XV500

MRP: 1600



MM5-T1002
Bracket Assy Mounting
(Transaxle-LH)
XV500

MRP: 2600



MM5-T3600
Bracket Assy Mounting
(Prop Shaft Brg)
XV500

MRP: 1350



MM5-A4608
Mounting (Strut-FR)
XV500

MRP: 1050



MM5-A4000 - 6 Pcs
MM5-A4100 - 4 Pcs
Rubber Bushes -FR
XV500

MRP: 2050



MM5-A5000 - 16 Pcs
Rubber Bushes -RR
XV500

MRP: 5000



MM5-A4600 - 4 Pcs
Protection Boot Kit -
FR W/Brg

MM5-A4601 - 3 Pcs
FR W/o Brg **MRP: 550**
XV500 1ST GEN
MRP: 700



MM5-A4610 - 4 Pcs
Protection Boot Kit -
FR W/Brg

MM5-A4610 - 3 Pcs
FR W/o Brg **MRP:**
XV500 2ND GEN (2015-21)
MRP: 650



MM5-A5600 - 6 Pcs
Protection Boot Kit -RR
XV500

MRP: 700



MM5-A5608
Bracket Assy. Mounting
(Strut -RR)
XV500

MRP: 1050

Engine Mounting



MM3-T1001
Bracket Assy Mounting
(Engine-RH) Hydraulic
XV300

MRP:



MM3-T2100
Bracket Assy Mounting
(Transaxle-LH)
XV300

MRP:



MM3-T1002
Bracket Assy Mounting
(Transaxle-LH)
XV300

MRP:



MM3-A5201
Bracket Assy Mounting
(Transaxle-LH)
XV300

MRP: 900

MM3-A4100 Rubber Bushes -FR (4 Pcs)

MRP: 1400



MM3-A4101 Bush Fr -FR



MM3-A4105 Bush Rr -FR



MM3-A4301 Bush (Bar-FR)

MM3-A4000 - 6 Pcs

Rubber Bushes -FR

XV300

MRP: 1550



MM3-A4601
Protection Boot Kit - FR

XV300

MRP: 550



MM3-A4608
Mounting (Strut-FR)

XV300

MRP: 1300



MM3-A5600
Protection Boot Kit -RR

XV300

MRP: 800



MM7-A4100
Protection Boot Kit
(Strut -FR)

XV700

MRP: 1600



MM7-A4601
Bracket Assy. Mounting
(Strut-RR)
XV700

MRP: 800



MM7-A5600
Protection Boot Kit
(Strut -FR)
XV700

MRP:

Rubber Parts



MM7-A4608
Mounting (Strut-FR)

XV700

MRP:



MM7-A4606
Bearing Strut -FR

XV700

MRP:



MMZ-T1001
Bracket Assy. Mounting
(Engine-RH)

MRAZO

MRP:



MMZ-T1002
Bracket Assy. Mounting
(Trans-LH)

MRAZO

MRP:



MMZ-T2100
Bracket Assy. Mounting
(Torque Rod RR)

MRAZO

MRP:



MMZ-A4608
Mounting (Strut-FR)

MRAZO

MRP:



MMZ-A4601
Protection Boot Kit -FR

MRAZO

MRP:



MMTH-T1001
Bracket Assy. Mounting
(Engine-RH)

THR 2ND GEN

MRP:



MMTH-T1002
Bracket Assy. Mounting
(Trans-LH)

THR 2ND GEN

MRP:



MMTH-A4608
Mounting (Strut-FR)

THR 2ND GEN

MRP:



MMTH-A4601
Bracket Assy. Mounting
(Strut-RR)

THR 2ND GEN

MRP:

Engine Mounting



MMK1-T1001
Bracket Assy. Mounting
(Engine-RH)
KU-100

MRP: 1500



MMK1-T1002
Bracket Assy. Mounting
(Engine-LH)
KU-100

MRP: 1650



MMK1-T1021
Bracket Assy. Mounting
(Engine-RH)
KU-100 DSL

MRP: 2500



MMK1-T1022
Bracket Assy. Mounting
(Engine-LH)
KU-100 DSL

MRP: 2600



MMK1-T2100
Bracket Assy. Mounting
(Torque-RR)
KU-100

MRP: 1600



MMK1-T2110
Bracket Assy. Mounting
(Torque-RR)
KU-100

MRP:



MMK1-A4000 - 6 Pcs
MMK1-A4100 - 4 Pcs
Rubber Bushes -FR
KU-100

MRP: 3400

MRP: 3200



MMK1-A5201
Bush RR Axle Arm
KU-100

MRP: 650



MMK1-A4608
Bracket Assy. Mounting
(Strut-FR)
KU-100

MRP: 600



MMK1-A5608
Bracket Assy. Mounting
(Strut-RR)
KU-100

MRP:



MMK1-A4600 - 5 Pcs
Protection Boot Kit-FR
With Brg
KU-100

MRP: 1050



MMK1-A5600
Protection Boot
Kit - RR
KU-100

MRP:

Rubber Parts



MMB2-T1001
(Engine-RH)

BOLR2 (16-),
QUNTO, TU300

MRP: 2400



MMB2-T1002
(Engine-LH)

BOLR2 (16-),
QUNTO, TU300

MRP: 2400



MMB2-T2000
(Trans -RR)

BOLR2 (16-),
QUNTO, TU300

MRP: 650



MMB1-T1000
Mounting FR
BOLR, JEP INT,
MAR, MAX, UTI
MRP: 600



MMB1-T2000
Mounting RR
BOLR
MRP: 670



MMJI-T2020
Mounting RR
JEP INT, MAR
MRP: 650



MMJI-T2030
Mounting RR
JEP INT, MAX
MRP: 650



MMJI-T2130
Mounting RR
JEP INT, UTI
MRP: 320

BOLR BUSHES - RR



MMB1-A5735
Spring Bush



MMB1-T5735
Spring Bush PU



MMB1-T5750
RR Spring Bush W/PIPE



MMB1-T5760 (12 Pcs)
Spring Bush PU



MMB1-A5760 (12 Pcs)
RR Spring Bush



MMB1-T4300
Stab Kit -FR

4301



4405



MMB1-A4300
Stab Kit

4101

4201



4001

MMB1-A4000 - 16 Pcs
Rubber Bushes -FR

BOLRO

MRP: 1200

4111

4115



4001

MMSC-A4010
Rubber Bushes -RR

SCORP MHWK

MRP: 2300



MMSC-A4000
Rubber Bushes -FR

SCORP CRD

MRP: 2400



MMSC-A5000
Rubber Bushes -RR

SCORP MHWK, CRD

MRP: 3900

4001

4101

4105



4301

MMS1-A4000
Rubber Bushes -FR

SCORP S10

MRP: 3500



MMS1-A5000
Rubber Bushes -RR

SCORP S10

MRP: 3400



MMS1-A4601 - 8 Pcs

Protection Boot Kit -
FR W/Brg
SCR-P-S10

MMS1-T4602
Bump Stopper -FR

MRP: 600



MMS1-T5602

Bump Stopper -RR

SCR-P-S10

MRP: 440

SCRIP BUSHES



MMSC-T5700
RR Spring (12 Pcs)

MMSC-T4300
Stab Kit-FR (16 Pcs)

SCRIP MOUNTING



MMSC-T1000

Mounting FR
MRP: 1050



MMSC-T1010

Mounting FR (MHWK)
MRP: 1350



MMSC-A3622

Mounting CJA W/BKT
MRP: 1050



MMSC-A3611

Mounting CJA Rubr
MRP:



MMSC-A3620

Mounting CJA W/Brg
MRP: 765



MMXY-T1000

Bracket Assy Mounting
(Engine -FR)
XYL

MRP: 750



MMXY-T2000

Bracket Assy Mounting
(Trans-RR)
XYL

MRP: 950



MMXY-A4608

Mounting (Strut-FR)
XYL

MRP: 775



MMXY-A4505
Strut Bush

MMXY-A4601 - 4 Pcs

Protection Boot Kit -FR

XYL

MRP: 575



MMXY-T3600

Bracket Assy Mounting
(Prop Shaft Brg)
XYL

MRP: 1600



MMXY-A5000 - 12 Pcs

Rubber Bushes -RR

XYL

MRP: 3700



MMXY-A4000 - 14 Pcs

Rubber Bushes -FR

XYL

MRP: 3000



MMXY-A6010S

Rubber Bushes -FR

XYL

MRP:

Rubber Parts

MAH JETO



MJE-1000
Front Eng Mtg
MRP: 640



MJE-2100
Trans Mtg - RR
MRP: 630



MJE-4608
Mount Strut- FR
MRP: 330



MJE-4600
Protection Boot Kit - FR
MRP: 330

MAH PGT 5400, CMDR, ARMDA



JP-2400
Gear Lever Boot
MRP:



JP-2405
Tfr Case Boot
MRP:



JP-3951
Sil Support Mtg
MRP:



JP-4809
FR Axle Bumper Big
MRP:



JP-4849
FR Axle Bumper Small
MRP:



JP-5809
RR Axle Bumper Small
MRP:

MAH NSN CKNG, LKNG



JP-1000
Front Eng Mtg
MRP:



JP-2000
Rear Eng Mtg
MRP:



MN-1000
Front Eng Mtg
MRP:



MN-1020
Eng Mtg -FR
MRP:



MN-2000
Rear Eng Mtg
MRP:

MAH NSN CKNG, LKNG



MN-3000
Cabin Mtg W/Bkt
MRP:



MN-3001
Cabin Mtg Set
MRP:



MN-3010
Cabin Mtg W/Bkt
MRP:



MN-3110
Cabin Mtg W/Bkt
MRP:



MN-3201
Tipper Pad Canvas
MRP:

MAH NSN CKNG, LKNG



MN-4300M
Link Kit
MRP:



MN-4700T
Link Kit PU
MRP:



MN-5709
Helper Pad Assy.
MRP:



MN-7605
Air Duct Mtg.
MRP:

MAH BLRO MPV, JP INTL, UTLY, MXMO



JB-2400
Gear Lever Boot
MAH BLRO MPV
MRP:



JB-6010S
PWR Strng Boot Set Synth
MAH BLRO MPV
MRP:



JI-2425
Tfr Case Boot
MAH JP INTL, UTLY
MRP:



JM-4620
Protection Boot Kit -FR
MRP:



JM-4630
Mount Strut -FR
MAH MXMO TY-2
MRP:

ECHR CNTR



EC-1000
Front Eng Mtg
MRP:



EC-2000
Trans Mtg - RR
MRP:



EC-3000
Cabin Mtg -FR
MRP:



EC-3010
Cabin Mtg -FR (Nylon)
MRP:



EC-3121
Cabin Mtg -RR
MRP:

ECHR CNTR



EC-3600
Centre Joint
Rubber W/Brg
MRP:



EC-3601
Centre Joint
Rubber
MRP:



EC-4720T
Spring Bush PU - FR
MRP:



EC-4515
Shock Bush RR
MRP:

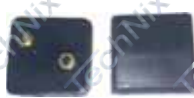


EC-4700T
Spring Bush PU - FR
MRP:

ECHR CNTR



EC-5709
Stopper Rubber
Bumper
MRP:



EC-5719
Stopper Rubber
Bumper
MRP:



EC-5720T
Spring Bush PU - RR
MRP:



EC-5729
Helper Pad
MRP:



EC-5739
Helper Pad
MRP:



EC-3124
RR Cabin Mtg.
MRP:

SWRJ MZDA



SM-1000
Front Eng Mtg
MRP:



SM-1905
Radiator Mtg.
MRP:



SM-2000
Trans Mtg - RR
MRP:



SM-3000
Cabin Mtg -FR
MRP:



SM-3101
Cabin Mtg Set -RR
MRP:



SM-3201
Tipper Pad Canvas
MRP:

SWRJ MZDA



SM-3600
Centre Joint
Rubber W/Brg
MRP:



SM-3601
Centre Joint
Rubber
MRP:



SM-4720
Spring Bush PU - FR
MRP:



SM-5709
Sheet Rubber
MRP:



SM-5720
Spring Bush PU - RR
MRP:

CHV TVERA



CT-5700T
RR Spring Bush PU
MRP:



LD-5700T
RR Spring Bush PU
MRP:



LD-5701
Spring Bush - FR
MRP:



LD-5701T
Spring Bush - FR PU
MRP:



BT-5700T
RR Spring Bush PU
MRP:



AQ5-T1001
Bracket Assy Mounting
(Engine-FR) Hydraulic
AU-A4 (TY-8K) 08-16
Q5 08-17
POR-MCAN
MRP: 5600



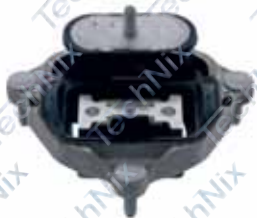
AQ5-T1002
Bracket Assy Mounting
(Engine-FR) W/sensor
AU-A4 (TY-8K) 08-16
Q5 08-17
POR-MCAN
MRP: 5600



AA6-T1001
Bracket Assy Mounting
(Engine-FR)
A6 4G
MRP: 5600



AA6-T1002
Bracket Assy Mounting
(Engine-FR) W/Sensor
A6 4G
MRP: 5600



AQ5-T2100
Bracket Assy Mounting
(Trans-RR)
AU-A4 (TY-8K) 08-16
Q5 08-17
A6 (TY-4G, C7)
POR-MCAN
MRP: 2100



AQ7M-T2100
Bracket Assy Mounting
(Engine-LH)
A6 4G, A8, Q7(4M)
MRP: 8500



AA6F-T1001
Bracket Assy Mounting
(Engine-RH)
A6 4F PTL
MRP: 6000



AA6F-T1002
Bracket Assy Mounting
(Engine-LH)
A6 4F PTL
MRP: 6000



AA6F-T1021
Bracket Assy Mounting
(Engine-RH) W/Sensor
A6 4F DSL
MRP: 8500



AA6F-T1022
Bracket Assy Mounting
(Engine-LH) W/Sensor
A6 4F DSL
MRP: 8500



AA6F-T2000
Bracket Assy Mounting
(Trans-RR)
A6 4F
MRP: 5200



AA4W-T4608
Bracket Assy Mounting
(Strut-FR)
A4 8W
MRP: 3000



AQ5A-T1001
Bracket Assy Mounting
(Engine-RH) Hydraulic
W/Sensor
AU-Q5 (80A), A4 (8W),
A5 (F5), A6 (4A)
MRP: 9500



AQ5A-T1002
Bracket Assy Mounting
(Engine-LH) Hydraulic
W/Sensor
AU-Q5 (80A), A4 (8W),
A5 (F5), A6 (4A)
MRP: 9500



AQ5-T4100 - 10 Pcs
Bracket Assy Mounting
(Control Arm-FR)- 75mm
AU-A4 (TY-8K) 08-16
A6 (TY-4G, C7) 10-18
Q5 08-17
MRP: 5600



AA4W-T2100
Bracket Assy Mounting
(Trans-RR)
AU-A4 (8W)
MRP:



AQ5-T4301
Rubber Bush Bar -FR
(ID= 24mm) **MRP: 350**

AQ5-T4311
Rubber Bush Bar -FR
(ID= 29mm) **MRP: 350**
AU-Q5, A4, A6



AQ5-T4110 - 10 Pcs
Bracket Assy Mounting
(Control Arm-FR)- 65mm
AU-A4 (TY-8K) 08-16
A6 (TY-4G, C7) 10-18
Q5 08-17
MRP: 6200



AQ5-A4601
Protection Boot Kit -FR
AU- A4 (8K, 8W), A5 (F5)
A6 (4G, 4K), A7 (4G)
Q5 (8R, 8W), Q7 (4M), Q8
POR-MCAN **MRP: 650**



AQ5-A5600
Protection Boot Kit -RR
AU- A4 (8K, 8W), A5 (F5)
A6 (4G, 4K), A7 (4G)
Q5 (8R, 8W), Q7 (4M), Q8
POR-MCAN **MRP: 700**



AQ5-T4608
Bracket Assy Mounting
(Strut-FR)
AU-A4 (TY-8K) 08-16,
Q5 08-17
POR-MCAN
MRP: 1100



AA6-T4608
Bracket Assy Mounting
(Strut-FR)
AU-A6 (TY-4G, C7) 10-18
AU-A6 (TY-4G)
POR-MCAN
MRP: 1400



AA4W-T4100
Rubber Bushes- FR
AU-A4 4W
MRP:



AQ5-T5608
Bracket Assy Mounting
(Strut-RR)
AU-A4 (TY-8K) 08-16,
Q5 08-17
MRP: 1400

Rubber Parts



AQ3-T1001
Bracket Assy Mounting
(Engine-RH) Hydraulic
AU-Q3 (TY-8U) 2.0L 012-18

MRP: 4600



AQ3-T1002
Bracket Assy Mounting
(Trans-LH)
AU-Q3 (TY-8U) 1.4L 12-18
PTL

MRP: 4800



AQ3-T1022
Bracket Assy Mounting
(Trans-LH) Hydraulic
AU-Q3 (TY-8U) 12-18 - DSL

MRP: 7800



AQ3-T2100
Bracket Assy Mounting
(Torque Rod RR) MT
AU-Q3 (TY-8U) 2.0L 12-18

MRP: 2100



AQ3-T2110
Bracket Assy Mounting
(Torque-RR) AT
AU-Q3 (TY-8U) DSL

MRP: 2100



SLA-T3000
Bracket Assy Mounting
(Torque-UPR/LWR)
AU-Q3 (TY-8U) 12-18
S-LAU, SUPB, YET
V-JET, PAS

MRP:

SLA-A4101 Control Arm-FR



AQ3-T4100M - 4 Pcs

Bracket Mounting
(Control Arm-FR)
AU-Q3 2012-18
VV-PSAT

MRP: 4200

AQ3-T4105M (L+R) Control Arm



SLA-T5000 - 16 Pcs

Mounting Kit
(Control Arm-RR)
S-LAU, SUPB, YET
V-JET, PSAT

MRP: 5800



AQ3-A4601
Protection Boot Kit - FR

AU-Q3 2012-18
VV-PSAT

MRP: 700



SLA-A5600 - 4 Pcs

Protection Boot Kit
-RR
S-LAU, SUPB, YET
V-JET, PSSAT
AU-Q3

MRP: 725

SLA-A5603 Boot
SLA-T5602 Bump -RR 135mm



SLA-T4608
Bracket Assy Mounting
(Strut-FR)
S-LAU, SUPB, YET
V-JET, PSAT
AU-Q3

MRP: 1100



SLA-T5608
Bracket Assy Mounting
(Strut-RR)
S-LAU, SUPB, YET
V-JET, PSAT
AU-Q3

MRP: 1200

Engine Mounting



AQ7-T1000
Bracket Assy Mounting
(Engine-FR) Hydraulic
AU-Q7 (TY-4L) 06-15
POR-CYN 02-18
MRP: 5700



AQ7-T1020
Bracket Assy Mounting
(Engine-FR) W/Vacuum
AU-Q7 (TY-4L) 06-15
POR-PANMRA, CYN 02-18
MRP: 8000



PCY-T1001
Bracket Assy Mounting
(Engine-RH) Hydraulic
POR-CYN 02-18
MRP: 8000



PCY-T1002
Bracket Assy Mounting
(Engine-LH) Hydraulic
POR-CYN 02-18
MRP: 8000



AQ7-T2000
Bracket Assy Mounting
(Trans-RR)
AU-Q7 (TY-4L) 06-15
PR-CYN 02-18
MRP: 3500



PCY-T2100
Bracket Assy Mounting
(Trans-RR)
POR-CYN 02-18
MRP: 5000



AQ7-T4100
Rubber Bushes- FR
72mm
AU-Q7, (TY-4L) 06-15
MRP: 9600



AQ7-T4110
Rubber Bushes- FR
62mm
POR-CYN 02-10
MRP: 10000



PCY-T4100
Rubber Bushes- FR
POR-CYN 02-
MRP: 11000



AQ7-T4608
Bracket Assy Mounting
(Strut-FR)
AU-Q7 (TY-4L) 06-15
PR-CYN 02-18
MRP: 1500



AQ7-T3600
Bracket Assy Mounting
(Prop Shaft Brg)
AU-Q7 (TY-4L) 06-15
PR-CYN 02-18
MRP: 4500

Rubber Parts



AQ7-T4301
Rubber Bush Bar -FR
AU-Q7 (TY-4L) 06-15
PR-CYN 02-
MRP: 700



AQ7-T5301
Rubber Bush Bar -RR
AU-Q7 (TY-4L) 06-15
PR-CYN 02-
MRP: 750



AQ7M-T1001
Bracket Assy Mounting
(Engine-RH) Hydraulic
W/Sensor
AU-Q7, POR-CAYN (NM)
LAMB-URUS, BENTL-BENTYG
MRP: 9500



AQ7M-T1002
Bracket Assy Mounting
(Engine-LH) Hydraulic
W/Sensor
AU-Q7, POR-CAYN (NM)
LAMB-URUS, BENTL-BENTYG
MRP: 9500



PNM-T1001
Bracket Assy Mounting
(Engine-RH) Hydraulic
POR-PNM PTL
MRP: 15000



PNM-T1002
Bracket Assy Mounting
(Engine-LH) Hydraulic
POR-PNM PTL
MRP: 15000



PNM-T2000
Bracket Assy Mounting
(Trans-RR)
POR-PNM
MRP:



PNM-T2100
Bracket Assy Mounting
(Torque -RR)
POR-MCAN GT, CYN GT, PNM
MRP: 8000



PMGT-T1001
Bracket Assy Mounting
(Engine-RH)
POR-MCAN GT
MRP: 15000



PMGT-T1002
Bracket Assy Mounting
(Engine-LH)
POR-MCAN GT
MRP: 15000



P911-T1000
Bracket Assy Mounting
(Engine-RH) Hydraulic
POR-911
MRP: 20000



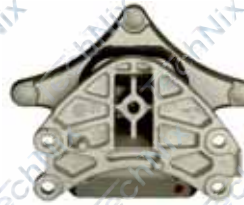
MBC4-T1000
Bracket Assy Mounting
(Engine-FR) Hydraulic
C204, E212
PTL
MRP: 4700



MBC4-T1020
Bracket Assy Mounting
(Engine-FR) Hydraulic
C204, E212
DSL
MRP: 4800



MBC4-T2100
Bracket Assy Mounting
(Trans-RR)
C204, E212, S221, CLS 350
C203, C202, E210, E211,
S220
MRP: 1600



MBC4-T2000
Bracket Assy Mounting
(Trans-RR)
C204, E212, S221, CLS 350
MRP: 5000



MBC4-T4608
Bracket Assy Mounting
(Strut-FR)
C204
MRP: 2200



MBE4-T4608
Bracket Assy Mounting
(Strut-FR)
E212
MRP: 2900



MBC4-T4606
Bearing Strut -FR
C204, C205, E212, A176
B246, GLA 156, CLA117
MRP: 1100



MBC4-T5608
Bracket Assy Mounting
(Strut-RR)
C204, E212
MRP: 1600



MBC4-A4601
Protection Boot Kit -FR
C204
MRP: 750



MBE4-A4601
Protection Boot Kit -FR
E212
MRP: 750



MBC4-A5600
Protection Boot Kit -RR
C204, E212
MRP: 750



MBC4-T5201
Bracket Assy Mounting
(Axle Beam-RR)
C204, E212, C205, CLS218
MRP: 2800

MERC-C203, C204, C205
MERC-E211, E212, S221

TechNix High Performance



MBC4-T4100
Rubber Bushes -FR

C204

MRP: 4400



MBE4-T4100
Rubber Bushes -FR

E212

MRP: 4600



MBC4-T4301
Rubber Bush Bar -FR

C204

MRP: 350



MBE4-T4301
Rubber Bush Bar -FR

E212

MRP: 350



MBC3-T1000
Bracket Assy Mounting
(Engine-FR) Hydraulic
W/ Rubber Cap
C203, E211, S221
PTL

MRP: 4000



MBC3-T1020
Bracket Assy Mounting
(Engine-FR) Hydraulic
C203, E211, S221
DSL

MRP: 3200



MBE3-T2100
Bracket Assy Mounting
(Trans-RR)
E211, CLS 350
PTL

MRP: 2100



MBS1-T2100
Bracket Assy Mounting
(Trans-RR)
S221

MRP: 2500



MBC3-T4608
Bracket Assy Mounting
W/Bearing (Strut-FR)
C203

MRP: 5900



MBE3-T4608
Bracket Assy Mounting
(Strut-FR)
E211

MRP: 2300



MBE3-A4601
Protection Boot Kit- FR
E211

MRP: 900



MBE3-T4301
Rubber Bush Bar -FR
E211

MRP: 600

TechNix High Performance

Engine Mounting



MBC3-T4301
Rubber Bushes Bar-
FR
C203

MRP: 400



MBC3-T5301
Rubber Bushes Bar-
RR
C203

MRP: 600



MBC5-T1001
Bracket Assy Mounting
(Engine-RH)
C205, E213, GLC253

MRP: 6200



MBC5-T1002
Bracket Assy Mounting
(Engine-FR)
C205, E213, GLC253

MRP: 6200



MBC5-T1011
Bracket Assy Mounting
(Engine-RH)
C205, E213, GLC253
4-MTIC

MRP: 6400



MBC5-T1012
Bracket Assy Mounting
(Engine-LH)
C205, E213, GLC253
4-MTIC

MRP: 6400



MBGC-T1001
Bracket Assy Mounting
(Engine-RH) W/Sensor
GLC 253 DSL

MRP: 7800



MBGC-T1002
Bracket Assy Mounting
(Engine-LH) W/ Sensor
GLC 253 DSL

MRP: 7800



MBS2-T1001
Bracket Assy Mounting
(Engine-RH) W/Sensor
S222, MAYBCH

MRP: 8500



MBS2-T1002
Bracket Assy Mounting
(Engine-LH) W/Sensor
S222, MAYBCH

MRP: 8500



MBC5-T2100
Bracket Assy Mounting
(Trans-RR)
C205, E213, GLC253

MRP: 2100



MBGC-T2000
Bracket Assy Mounting
(Trans-RR)
GLC 253 DSL

MRP: 6000

Rubber Parts



MBC5-T4608
Bracket Assy Mounting
(Strut-FR)
C205, E213, GLC253

MRP: 2400



MBC5-T5608
Bracket Assy Mounting
(Strut-RR)
C205, E213, GLC253

MRP: 1600



MBC5-A4601
Protection Boot Kit- FR
C205, E213, GLC253

MRP: 750



MBC5-A5600
Protection Boot Kit- RR
C205, E213, GLC253

MRP: 800



MBC5-T4301
Rubber Bush Bar -FR
C205, E213

MRP: 400



MBC5-T4100
Rubber Bushes -FR
C205, E213

MRP: 9600



MBGC-T4301
Rubber Bush
Bar-FR
GLC253

MRP: 400



MBGC-T4100
Rubber Bushes -FR
GLC253

MRP: 9600



MBA-T1031B
Bracket Assy Mounting
(Engine-RH) Bush
A176, B246, GLA156
CLA117

MRP: 1500



MBA-T1001
Bracket Assy Mounting
(Engine-RH) Hydraulic
A176, B246, GLA156
CLA117

MRP: 8500



MBA-T1002
Bracket Assy Mounting
(Engine-LH) Hydraulic
A176, B246, GLA156
CLA117

MRP: 7600



MBA-T1100
Bracket Assy Mounting
(Torque Rod FR)
A176, B246, GLA156
CLA117

MRP: 3650



MBA-T2100
Bracket Assy Mounting
(Torque Rod RR)
A176, B246, GLA156
CLA117

MRP: 4400

Engine Mounting



MBA-T4608
Bracket Assy Mounting
(Strut-FR)
A176, B246, GLA156
CLA117
MRP: 2800



MBA-T5608
Bracket Assy Mounting
(Strut-RR)
A176, B246, GLA156
CLA117
MRP: 2200



MBA-A4601
Protection Boot Kit-
FR
A176, B246, GLA156,
CLA117
MRP: 750



MBA-A5600
Protection Boot Kit -FR
A176, B246, GLA156
CLA117
MRP: 750



MBA-T4301
Rubber Bush Bar -FR
A176, B246, GLA156
CLA117
MRP: 350



MBA-T4100
Rubber Bushes -FR
A176, B246, GLA156
CLA117
MRP:



MBA2-T1001
Bracket Assy Mounting
(Engine-RH) Hydraulic
A177, CLA118,
B247, GLA247, GLB247
MRP:



MBA2-T1002
Bracket Assy Mounting
(Engine-LH) Hydraulic
A177, CLA118,
B247, GLA247, GLB247
MRP:



MBA2-T1100
Bracket Assy Mounting
(Torque Rod FR)
A177, CLA118,
B247, GLA247, GLB247
MRP:



MBA2-T2100
Bracket Assy Mounting
(Torque Rod RR)
A177, CLA118,
B247, GLA247, GLB247
MRP:



MBA2-T4608
Bracket Assy Mounting
(Strut-FR)
A177, CLA118,
B247, GLA247, GLB247
MRP:



MBA2-T4606
Bearing Strut -FR
A177, CLA118,
B247, GLA247, GLB247
MRP:



MBG6-T1001
Bracket Assy Mounting
(Engine-RH) Hydraulic
ML, GL, GLE, GLS 166
PTL
MRP: 6400



MBG6-T1002
Bracket Assy Mounting
(Engine-LH) Hydraulic
ML, GL, GLE, GLS 166
PTL
MRP: 6400



MBG6-T1021
Bracket Assy Mounting
(Engine-RH) Hydraulic
W/Sensor
ML, GL, GLE, GLS 166
DSL
MRP: 6400



MBG6-T1022
Bracket Assy Mounting
(Engine-LH) Hydraulic
W/Sensor
ML, GL, GLE, GLS 166
DSL
MRP: 6400



MBG6-T2000
Bracket Assy Mounting
(Trans-RR)
ML, GL, GLE, GLS 166
MRP: 2500



MBG6-T4301
Rubber Bush Bar -FR
ML, GL, GLE, GLS 166
MRP: 400



MBG6-T4100
Rubber Bushes - FR
ML, GL, GLE, GLS 166
MRP: 7500



MBG6-T4100M
Rubber Bushes - FR
(W/Bkt)
ML, GL, GLE, GLS 166
MRP: 12000



MBG6-T4608
Bracket Assy Mounting
(Strut-FR)
ML, GL, GLE, GLS 166
MRP: 3200



MBG6-A4601
Protection Boot Kit-
FR
ML, GL, GLE, GLS 166
MRP: 900



MBG6-T5608
Bracket Assy Mounting
(Strut-RR)
ML, GL, GLE, GLS 166
MRP: 3200



MBG7-T1001
Bracket Assy Mounting
(Engine-RH) Hydraulic
GLE, GLS 167 PTL

MRP:



MBG7-T1002
Bracket Assy Mounting
(Engine-LH) Hydraulic
GLE, GLS 167 PTL

MRP:



MBG7-T1021
Bracket Assy Mounting
(Engine-RH) Hydraulic
W/Sensor
GLE, GLS 167 DSL

MRP:



MBG7-T1022
Bracket Assy Mounting
(Engine-LH) Hydraulic
W/Sensor
GLE, GLS 167 DSL

MRP:



MBG4-T1000
Bracket Assy Mounting
(Engine-FR) Hydraulic
ML, GL 164

MRP: 6300



MBG4-T2000
Bracket Assy Mounting
(Trans-RR)
ML, GL 164

MRP: 2800



MBG4-T4301
Rubber Bush Bar -FR
ML, GL 164

MRP: 700



MBG4-T4608
Bracket Assy Mounting
(Strut-FR)
ML, GL 164

MRP: 3800



MBC4-T3601S
Prop Shaft Mounting
Kit
MER- C204, E212, S221
GLE166, GLS166, ML164
GL164, C203, E211
MRP: 4000



MBG4-T4100M
Rubber Bushes -FR
W/Bkt
ML, GL 164

MRP: 12500

BM- 3S E90
BM-X1 E84

TechNix High Performance



B3E-T1000
Bracket Assy Mounting
(Engine-FR)
3S E90, X1 E84

MRP: 3900



B3E-T2100
Bracket Assy Mounting
(Trans-RR)
3S E90, X1 E84

MRP: 480



B3E-T1020
Bracket Assy Mounting
(Engine-FR) W/Vacuum
3S E91

MRP: 5900



B3E-T4608
Bracket Assy Mounting
(Strut-FR)
3S E90, X1 E84, 5S E90

MRP: 1700



B3E-T5608
Bracket Assy Mounting
(Strut-RR)
3S E90, X1 E84

MRP: 1300



B3E-A4601
Protection Boot Kit - FR
3S E90, X1 E84

MRP: 700



B3E-T4100
Bushes - FR
3S E90, X1 E84

MRP: 4500



B3E-A5600
Protection Boot Kit - RR
3S E90, X1 E84

MRP: 750



B3E-T5501
Support Mount-RR
3S E90, X1 E84

MRP: 800



B3E-T4301
Rubber Bush Bar -FR
3S E90, X1 E84

MRP: 500



B3E-T5301
Rubber Bush Bar -RR
3S E90, X1, 5S E50, 7S E65

MRP: 700

TechNix High Performance

Engine Mounting



B3F-T1001
Bracket Assy Mounting
(Engine-RH) Hydraulic
3S F30

MRP: 4500



B3F-T1002
Bracket Assy Mounting
(Engine-LH) Hydraulic
3S F30

MRP: 4500



B3F-T2100
Bracket Assy Mounting
(Trans-RR)
3S F30

MRP: 2000



B3F-T4608
Bracket Assy Mounting
(Strut-FR)
3S F30

MRP: 2800



B3F-T4618
Bracket Assy Mounting
(Strut-FR)
3S GT F34

MRP: 3300



B3F-T4606
Bearing Strut -FR
3S F30, GT F34

MRP: 1300



B3F-T4100
Bushes - FR
3S F30, GT F34

MRP: 4600



B3F-T4301
Rubber Bush Bar -FR
3S F30, GT F34

MRP: 400



B3F-T5301
Rubber Bush Bar -RR
3S F30, GT F34

MRP: 700



B3F-T5608
Bracket Assy Mounting
(Strut-RR)
3S F30, GT F34

MRP: 2200



B3F-A4601
Protection Boot Kit - FR
3S F30, GT F34

MRP: 950



B3F-A5600
Protection Boot Kit - RR
3S F30, GT F34

MRP: 750

Rubber Parts

BM-X1 F48, 2S F44
MIN COPR F55, F56

TechNix High Performance



BX1F-T1001
Bracket Assy Mounting
(Engine-RH)
BM-X1 F48, 2S F44
MIN COPR F55, F56
MRP: 5800



BX1F-T1002
Bracket Assy Mounting
(Engine-LH)
BM-X1 F48, 2S F44
MIN COPR F55, F56
MRP: 5400



BX1F-T2100
Bracket Assy Mounting
(Trans-RR)
BM-X1 F48, 2S F44
MIN COPR F55, F56
MRP: 4200



BX1F-T4608
Bracket Assy Mounting
(Strut-FR)
BM-X1 F48, 2S F44
MIN COPR F55, F56
MRP: 3100



BX1F-T4606
Bearing - Strut FR
BM-X1 F48, 2S F44
MIN COPR F55, F56
MRP: 1300



BX1F-A4601
Protection Boot Kit - FR
BM-X1 F48, 2S F44
MIN COPR F55, F56
MRP: 950



BX1F-A5600
Protection Boot Kit - RR
BM-X1 F48, 2S F44
MIN COPR F55, F56
MRP: 800



BX1F-T4301
Rubber Bush Bar - FR
BM-X1 F48, 2S F44
MIN COPR F55, F56
MRP: 400



B3F-T5608
Bracket Assy Mounting
(Strut-RR)
BM-X1 F48, 2S F44
MIN COPR F55, F56
MRP: 2200



B5F-T3601
Prop Shaft Mounting
(10061)
BM-3S, 5S, 7S, X1, X3, X5
X6, X7 (2004-)
MRP: 3200



BX3F-T3601
Prop Shaft Mounting
(511 454)
BM-3S, 5S, 7S, X1, X3, X5
X6, X7 (2004-)
MRP: 3000

TechNix High Performance

Engine Mounting



B5F-T1020R
Bracket Assy Mounting
(Engine-RH) Hydraulic
W/ Vacuum
5S F10 520D, 525D
DSL **MRP: 5400**



B5F-T1020L
Bracket Assy Mounting
(Engine-LH) Hydraulic
W/ Vacuum
5S F10 520D, 525D
DSL **MRP: 5400**



B5F-T1021
Bracket Assy Mounting
(Engine-RH) Hydraulic
5S F10 DSL
MRP: 5400



B5F-T1022
Bracket Assy Mounting
(Engine-LH) Hydraulic
5S F10 DSL
MRP: 5400



B5F-T2120
Bracket Assy Mounting
(Trans-RR)
5S E60, F10 DSL
MRP: 1400



B5F-T2100
Bracket Assy Mounting
(Trans-RR)
5S F10 PTL
ROLS ROYC-GHOST
MRP: 2500



B5F-T1000
Bracket Assy Mounting
(Engine-FR) Hydraulic
5S F10 PTL
MRP: 5600



B5F-T1031
Bracket Assy Mounting
(Engine-RH) Hydraulic
W/ Vacuum
5S F10, 7S F02 3L DSL
MRP: 5900



B5F-T1032
Bracket Assy Mounting
(Engine-LH) Hydraulic
W/ Vacuum
5S F10, 7S F02 3L DSL
MRP: 5900



B5F-T4608
Bracket Assy Mounting
(Strut-FR)
5S F10
MRP: 2100



B5F-T5608
Bracket Assy Mounting
(Strut-RR)
5S F10
MRP: 2500



B5F-A4601
Protection Boot Kit- FR

5S F10

MRP: 700



B5F-T4100
Bushes FR

5S F10

MRP: 7000



B5F-T4301
Rubber Bush Bar -FR

5S F10

MRP: 400



B5F-T5301
Rubber Bush Bar -RR

5S F10

MRP: 700



B5E-T1001
Bracket Assy Mounting
(Engine-RH) Hydraulic

5S E60

MRP: 5400



B5E-T1002
Bracket Assy Mounting
(Engine-LH) Hydraulic

5S E60

MRP: 5400



B5E-T1021
Bracket Assy Mounting
(Engine-RH) W/Sensor

5S E60 DSL

MRP: 5600



B5E-T1022
Bracket Assy Mounting
(Engine-LH) W/Sensor

5S E60 DSL

MRP: 5600



B5F-T2120
Bracket Assy Mounting
(Trans-RR)

5S E60, F10 DSL

MRP: 1400



B5E-T4301
Rubber Bush Bar -FR

5S E60

MRP: 600



B3E-T4608
Bracket Assy Mounting
(Strut-FR)

3S E90, X1 E84, 5S E60

MRP: 1700



B5E-T5608
Bracket Assy Mounting
(Strut-RR)

5S E60, 7S E65

MRP: 2400

Engine Mounting



BX3F-T1001
Bracket Assy Mounting
(Eng-RH)
X3 F25

MRP: 4500



BX3F-T1002
Bracket Assy Mounting
(Eng-LH)
X3 F25

MRP: 4500



BX3F-T2100
Bracket Assy Mounting
(Trans-RR)
X3 F25

MRP: 2700



BX3F-T4608
Bracket Assy Mounting
(Strut-FR)
X3 F25

MRP: 2900



BX3F-T4606
Bearing (Strut-FR)
X3 F25

MRP: 1300



BX3F-T5608
Bracket Assy Mounting
(Strut-RR)
X3 F25

MRP: 2500



BX3F-T4100
Rubber Bushes - FR
X3 F25

MRP: 4500



BX3F-A4601
Protection Boot Kit-
FR
X3 F25

MRP: 800



BX3F-A5600
Protection Boot Kit-
RR
X3 F25

MRP: 800



BX3F-T4301
Bush Bar - FR
X3 F25

MRP: 400



BX3F-T5301
Bush Bar- RR
X3 F25

MRP: 700

Rubber Parts



BX5E-T1001
Bracket Assy Mounting
(Engine-RH) W/Vacuum
X5 E70, X6 E71

MRP: 9300



BX5E-T1002
Bracket Assy Mounting
(Engine-LH) W/Vacuum
X5 E70, X6 E71

MRP: 9300



BX5F-T1001
Bracket Assy Mounting
(Engine-RH) W/Vacuum
X5 F15, X6 F16

MRP: 9300



BX5F-T1002
Bracket Assy Mounting
(Engine-LH) W/Vacuum
X5 F15, X6 F16

MRP: 9300



BX5E-T2100
Bracket Assy Mounting
(Trans-RR)
X5 E70, X6 E71
X5 F15, X6 F16

MRP: 2500



BX5E-T4301
Rubber Bush Bar - FR
X5 E70, X6 E71

MRP: 650



BX5E-T4100
Rubber Bushes - FR
X5 E70, X6 E71

MRP: 7500



BX5F-T4100
Rubber Bushes - FR
X5 F15, X6 F16

MRP: 7600



BX5E-T4608
Bracket Assy Mounting
W/Coil Pad (Strut-FR)
X5 E70, X6 E71

MRP: 3600



BX5E-T5608
Bracket Assy Mounting
(Strut-RR)
X5 E70, X6 E71

MRP: 3100



BX5F-T4608
Bracket Assy Mounting
W/Coil Pad (Strut-FR)
X5 F15, X6 F16

MRP: 3600



BX5F-T5608
Bracket Assy Mounting
(Strut-RR)
X5 F15, X6 F16

MRP: 3300



BX5E-A4601
Protection Boot Kit- FR

X5 E70, X6 E71

MRP: 1100



BX5F-A4601
Protection Boot Kit- FR

X5 F15, X6 F16

MRP: 800



B5G-T1001
Bracket Assy Mounting
(Engine-RH)

3S G20, 5S G30, 6S G32, 7S G12
X3 G01, X5 G05, X6 G06, X7 G07
PTL

MRP: 6000



B5G-T1002
Bracket Assy Mounting
(Engine-LH)

3S G20, 5S G30, 6S G32, 7S G12
X3 G01, X5 G05, X6 G06, X7 G07
PTL

MRP: 6000



B5G-T1021
Bracket Assy Mounting
(Engine-RH) W/Vacuum

3S G20, 5S G30, 6S G32, 7S G12
X3 G01, X5 G05, X6 G06, X7 G07
DSL

MRP: 7400



B5G-T1022
Bracket Assy Mounting
(Engine-LH) W/Vacuum

3S G20, 5S G30, 6S G32, 7S G12
X3 G01, X5 G05, X6 G06, X7 G07
DSL

MRP: 7400



B5G-T2000M
Bracket Assy Mounting
(Trans -RR) W/Bkt

3S G20, 5S G30, 6S G32, 7S G12
X3 G01, X5 G05, X6 G06, X7 G07

MRP: 6000



B5G-T2000
Bracket Assy Mounting
(Trans -RR)

3S G20, 5S G30, 6S G32, 7S G12
X3 G01, X5 G05, X6 G06, X7 G07

MRP: 5000



B5G-T4608
Bracket Assy Mounting
(Strut-FR)

BM-5S G30, G31

MRP: 2100



B3G-T5608
Bracket Assy Mounting
(Strut-FR)

BM-3S G20, G21

MRP: 2700



B3G-T4608
Bracket Assy Mounting
W/Coil Pad (Strut-FR)

BM-3S G20, G21

MRP: 2500



B3G-T4606
Bearing (Strut-FR)

BM-3S G20, G21

MRP: 1200



BX3G-T4608
Bracket Assy Mounting
W/Coil Pad (Strut-FR)
BM-X3 G01, X4 G02

MRP: 2500



BX3G-T4606
Bearing (Strut-FR)
BM-X3 G01, X4 G02

MRP: 1200



BR60-T1001
Bracket Assy Mounting
(Engine-RH)
MINI R60

MRP: 6500



BR60-T2000
Bracket Assy Mounting
(Trans-RR)
MINI R60

MRP: 5500



BR60-T2100
Bracket Assy Mounting
(Torque RR)
MINI R60

MRP: 4200



BR56-T2100
Bracket Assy Mounting
(Torque RR)
MINI R56

MRP: 4200



BR60-T4608
Bracket Assy Mounting
(Strut-FR)
MINI R60

MRP: 3000



BF56-T4608
Bracket Assy Mounting
(Strut-FR)
MINI F56

MRP: 4500



JXF-T1000
Bracket Assy Mounting
(Engine-FR) Hydraulic
XF, XJ PTL

MRP: 8000



JXF-T1020
Bracket Assy Mounting
(Engine-FR) Hydraulic
W/Vacuum Pipe
XF, XJ DSL

MRP: 6200



JXF-T2100
Bracket Assy Mounting
(Trans-RR)
XF, XJ

MRP: 4800



JXF-T4301
Bush Fr- Bar
XF

MRP: 500

JXF-T4608 Mounting



JXF-T4608B
Bracket Assy Mounting
(Strut-FR) W/Brg
XF

MRP: 3300

JXF-T4606 Bearing

JXJ-T4608 Mounting



JXJ-T4608B
Bracket Assy Mounting
(Strut-FR) W/Brg
XJ

MRP: 3800

JXJ-T4606 Bearing



JXF-A4601
Protection Boot Kit-FR
XF, XJ

MRP: 650



JXF-A5600
Protection Boot Kit - RR
XF, XJ

MRP: 700



JXF-T4100
Rubber Bushes -FR
XF

MRP:



JXF-T5608B
Bracket Assy Mounting
(Strut-RR)
XF, XJ

MRP: 4000



JXE-T1000
Bracket Assy Mounting
(Engine-FR)

XE

MRP: 7200



JXE-T2100
Bracket Assy Mounting
(Trans-RR)

XE, XF NM

MRP: 4800



JFP-T1011
Bracket Assy Mounting
(Engine-RH)

F-PCE
LR-VLR

MRP: 8000



JFP-T1012
Bracket Assy Mounting
(Engine-LH)

F-PCE
LR-VLR

MRP: 8000



JFP-T1000
Bracket Assy Mounting
(Engine-FR)

F-PCE
LR-VLR

MRP: 8000



JXE-T1020
Bracket Assy Mounting
(Engine-FR)

XE, XF NM, F-PCE
LR-VLR

MRP: 8000



JFP-T2100
Bracket Assy Mounting
(Trans-RR)

F-PCE
LR-VLR

MRP: 4400



JXE-T4608
Bracket Assy Mounting
(Strut-FR)

XE, XF NM, F-PCE
LR-VLR

MRP: 3200



JXE-T5608
Bracket Assy Mounting
(Strut-RR)

XE, XF NM, F-PCE
LR-VLR

MRP: 6800 (SET)



LRDS-T1001
Bracket Assy Mounting
(Engine-RH) Hydraulic
LR-FRLD2, RR-EVQ
DISC SPRT, VOL- XC60
XC70, V60, V70, S60, S80
MRP: 5000



LRDS-T1100
Bracket Assy Mounting
(Torque Rod FR)
LR-FRLD2, RR-EVQ
DISC SPRT, VOL- XC60
XC70, V60, V70, S60, S80
MRP: 3000



LRDS-T1002
Bracket Assy Mounting
(Trans-LH)
LR-FRLD2, RR-EVQ
DISC SPRT, VOL- XC60
XC70, V60, V70, S60, S80
MRP: 3000



LRDS-T2000
Bracket Assy Mounting
(Trans-RR)
LR-FRLD2, RR-EVQ
DISC SPRT, VOL- XC60
XC70, V60, V70, S60, S80
MRP: 7200



LRDS-T4608
Bracket Assy Mounting
(Strut-FR)
LR-FRLD2, RR-EVQ
DISC SPRT, VOL- XC60
XC70, V60, V70, S60, S80
MRP: 1800



LRDS-T4606
Bearing (Strut-FR)
LR-FRLD2, RR-EVQ
DISC SPRT, VOL- XC60
XC70, V60, V70, S60, S80
MRP: 1200



LRDS-T5608
Bracket Assy Mounting
(Strut-RR)
LR-FRLD2, RR-EVQ
DISC SPRT, VOL- XC60
XC70, V60, V70, S60, S80
MRP: 2500



LRDS-T4301
Bracket Assy Mounting
(Strut-RR)
LR-FRLD2, RR-EVQ
DISC SPRT, VOL- XC60
XC70, V60, V70, S60, S80
MRP: 500



LRDS-A4601
Protection Boot Kit- FR
LR-FRLD2, RR-EVQ
DISC SPRT, VOL- XC60
XC70, V60, V70, S60, S80
MRP: 800



LRDS-A5600
Protection Boot Kit- RR
LR-FRLD2, RR-EVQ
DISC SPRT, VOL- XC60
XC70, V60, V70, S60, S80
MRP: 800



LRD4-T1000
Bracket Assy Mounting
(Engine-FR)
LR4 RNG RVR SPRT V6-DSL

MRP: 9000



LR494-T1000
Bracket Assy Mounting
(Engine-FR)
LR- RR SPRT, VOG 405
494 PTL

MRP: 8500



LR405-T1000
Bracket Assy Mounting
(Engine-FR)
LR-RR SPRT, DISC 405
494 DSL

MRP: 8500



LR405-T1001
Bracket Assy Mounting
(Engine-RH)
LR-RR SPRT, DISC 405
494 DSL

MRP: 8500



LRD4-T2100
Bracket Assy Mounting
(Trans-RR)
RNG RVR SPRT V8,
LND RVR 3, 4, DISC

MRP: 6500



LRDS2-T5608
Bracket Assy Mounting
(Strut-RR)
RR-EVQ, DISC SPRT
2ND GEN (2019-)

MRP: 6800



LRDS2-T1001
Bracket Assy Mounting
(Engine-RH)
RR-EVQ, DISC SPRT
2ND GEN (2019-)

MRP: 11000



LRDS2-T1002
Bracket Assy Mounting
(Engine-LH)
RR-EVQ, DISC SPRT
2ND GEN (2019-)

MRP:



LRDS2-T1100
Bracket Assy Mounting
(Torque Rod FR)
RR-EVQ, DISC SPRT
2ND GEN (2019-)

MRP: 7000



LRDS2-T2000
Bracket Assy Mounting
(Trans-RR)
RR-EVQ, DISC SPRT
2ND GEN (2019-)

MRP:



LREV2-A5600
Protection Boot Kit- FR
RR-EVQ
2ND GEN (2019-)

MRP: 1800



LRDS2-A5600
Protection Boot Kit- RR
RR-DISC SPRT
2ND GEN (2019-)

MRP: 1800

Engine Mounting



VOX60-T1001
Bracket Assy Mounting
(Engine-RH)
VOL-XC60 (18-), XC90 (16-)
V60 (19-), V90 (17-) S60 (19-)
S90 (17-)
MRP: 8000



VOX60-T1002
Bracket Assy Mounting
(Transmission-LH)
VOL-XC60 (18-), XC90 (16-)
V60 (19-), V90 (17-) S60 (19-)
S90 (17-)
MRP: 9000



VOX60-T1100
Bracket Assy Mounting
(Torque - FR)
VOL-XC60 (18-), XC90 (16-)
V60 (19-), V90 (17-) S60 (19-)
S90 (17-)
MRP: 5500



VOX60-T1110
Bracket Assy Mounting
(Torque - FR)
VOL-XC60 (18-), XC90 (16-)
V60 (19-), V90 (17-) S60 (19-)
S90 (17-)
MRP: 4800



VOX60-T2000
Bracket Assy Mounting
(Trans-RR)
VOL-XC60 (18-), XC90 (16-)
V60 (19-), V90 (17-) S60 (19-)
S90 (17-)
MRP: 5500



VOX60-T2100
Bracket Assy Mounting
(Torque Rod - RR)
VOL-XC60 (18-), XC90 (16-)
V60 (19-), V90 (17-) S60 (19-)
S90 (17-)
MRP: 5000



VOX60-T2101
Bracket Assy Mounting
(Torque Rod - RR)
VOL-XC60 (18-), XC90 (16-)
V60 (19-), V90 (17-) S60 (19-)
S90 (17-)
MRP: 4200



VOX60-T4608
Bracket Assy Mounting
(Strut-FR)
VOL-XC60 (18-), XC90 (16-)
V60 (19-), V90 (17-) S60 (19-)
S90 (17-)
MRP: 3200



VOX90-T2101
Bracket Assy Mounting
(Torque Rod- RR)
VOLV- XC90 (2011-14),
S80 (99-06)
MRP: 5000



VOX90-T2000
Bracket Assy Mounting
(Engine-FR)
VOLV- XC90 (2011-14)
S80 (99-06)
MRP: 4500



VOX90-T4608
Bracket Assy Mounting
(Strut-FR)
VOL XC90
MRP: 1500



VOX90-T4606
Bearing (Strut-FR)
VOL XC90
MRP: 1200



VOV40-T1001
Bracket Assy Mounting
(Engine-RH)
VOL-V40 PTL

MRP: 8500



VOV40-T1002
Bracket Assy Mounting
(Engine-LH)
VOL-V40

MRP: 9000



VOV40-T2100
Bracket Assy Mounting
(Torque Rod - RR)
VOL-V40

MRP: 4500



VOV40-T1100
Bracket Assy Mounting
(Torque Rod FR)
VOL-V40

MRP: 8000



VOV40-T1021
Bracket Assy Mounting
(Engine-RH)
VOL-V40 DSL

MRP: 12500



VOV40-T2000
Bracket Assy Mounting
(Trans-RR)
VOL-V40

MRP: 12500



VOV40-T4608
Bracket Assy Mounting
(Strut-FR)
VOL-V40

MRP: 1300



LRDS-T4606
Bearing (Strut-FR)
VOL-V40

MRP: 1200



VOV40-A4601
Protection Boot Kit - FR
VOL-V40

MRP: 900



VOX40-T4608
Bracket Assy Mounting
(Strut-FR)
VOL-XC40

MRP:

A series of horizontal dashed lines for writing notes.

A series of horizontal dashed lines for writing notes.

A series of horizontal dashed lines for writing notes.